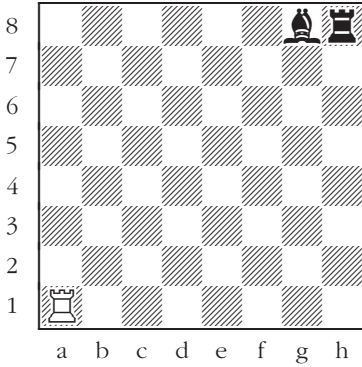


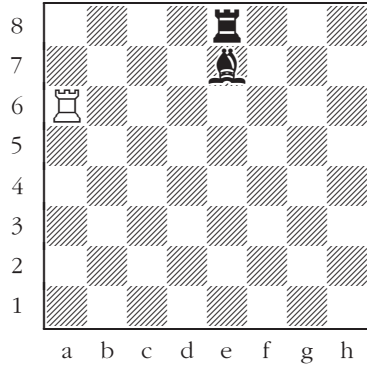
# Rooks and Bishops

## The pin

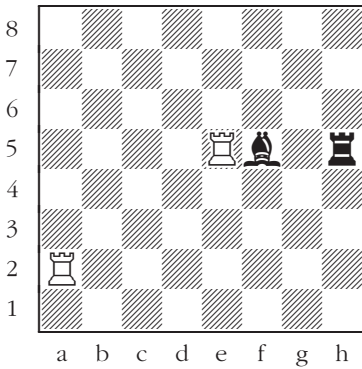
**White to move:** After which move by White does Black lose either the bishop or the rook, no matter what?



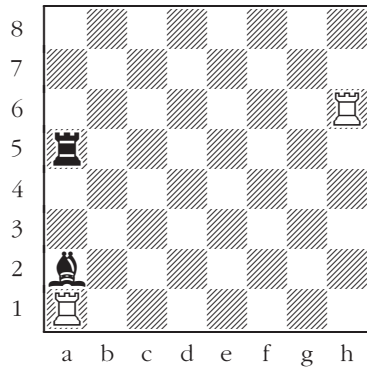
85



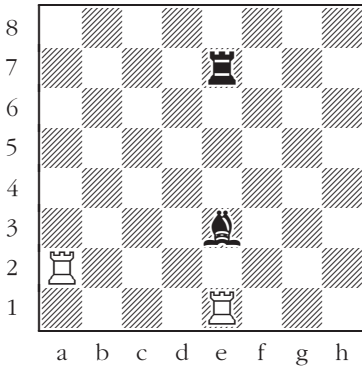
86



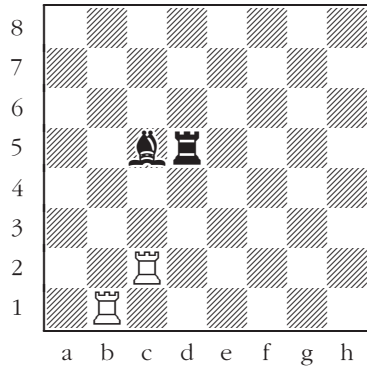
87



88



89

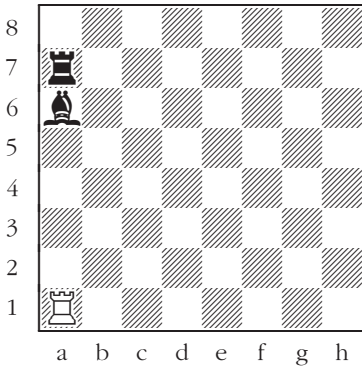


90

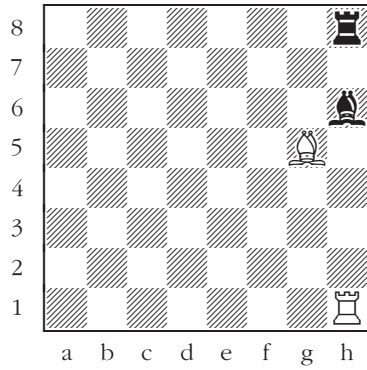
# Rooks and Bishops

## Escapes

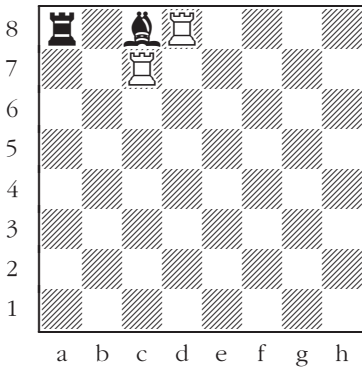
**Black to move:** How does Black avoid losing material?



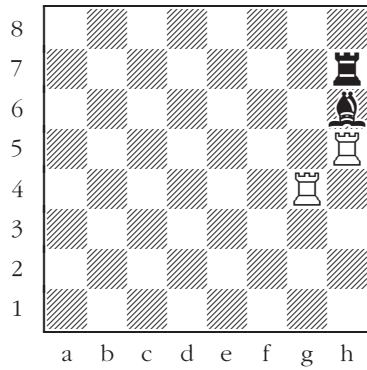
91



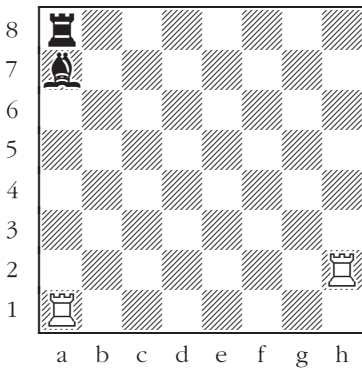
92



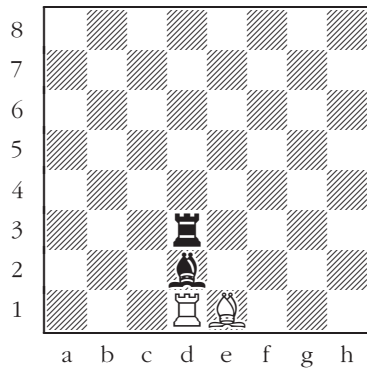
93



94



95

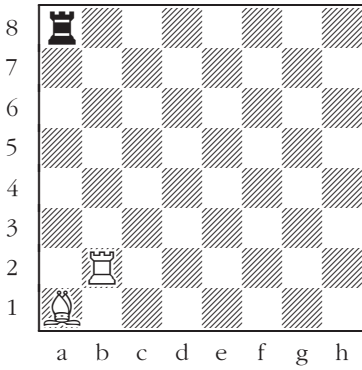


96

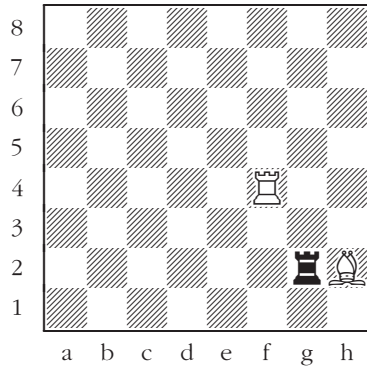
# Rooks and Bishops

## Defending

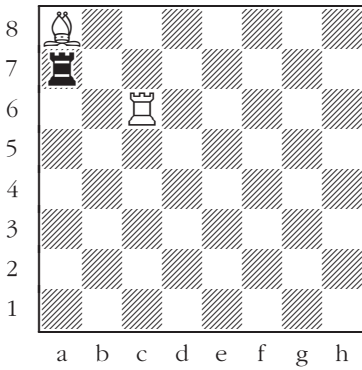
White to move: How does White avoid losing a piece?



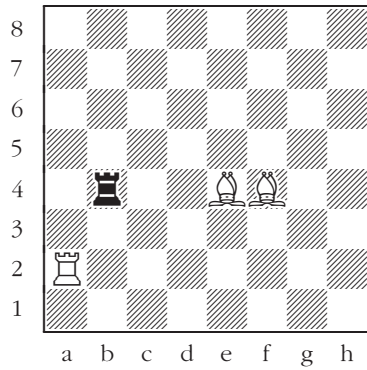
97



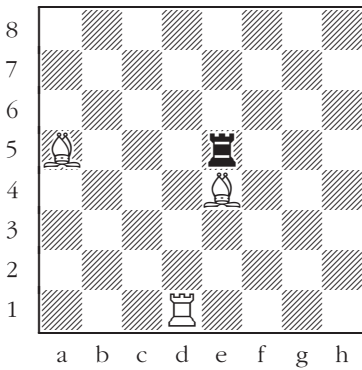
98



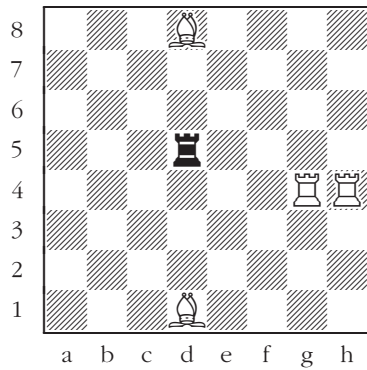
99



100



101

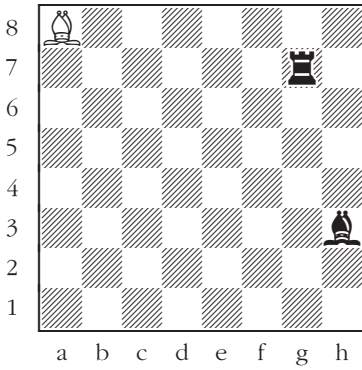


102

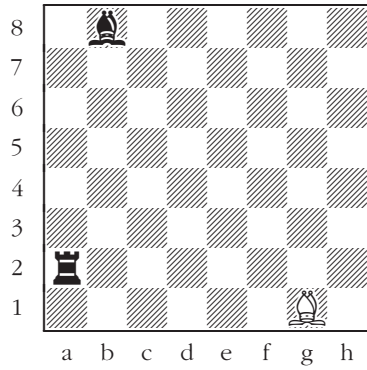
# Rooks and Bishops

## Exchanging

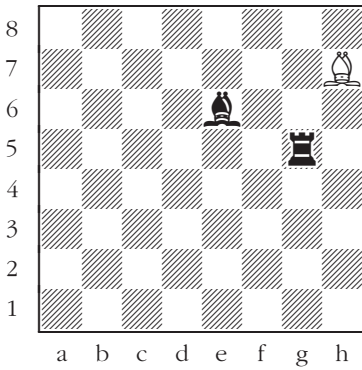
**Black to move:** Force the exchange of a white piece.



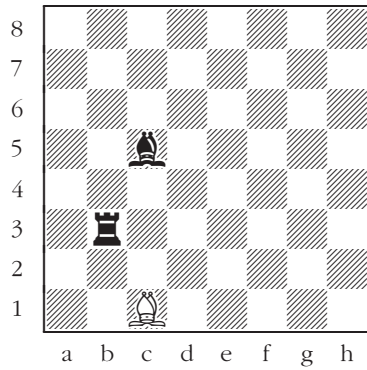
103



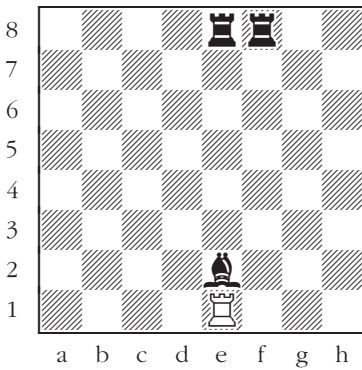
104



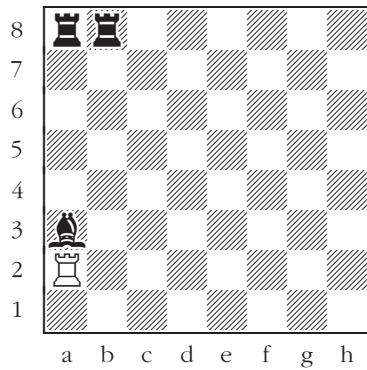
105



106



107



108