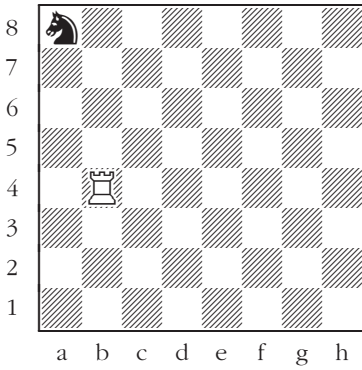


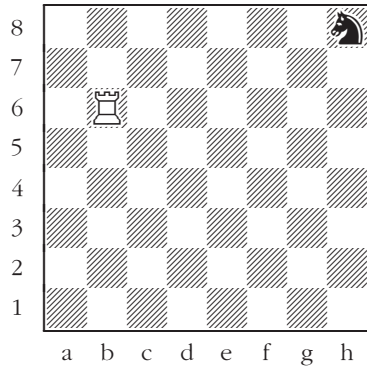
Knights, Queens, Rooks, and Bishops

The rook tames the knight

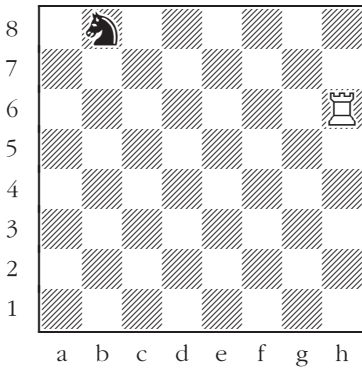
White to move: Which maneuver leads to capturing the black knight?



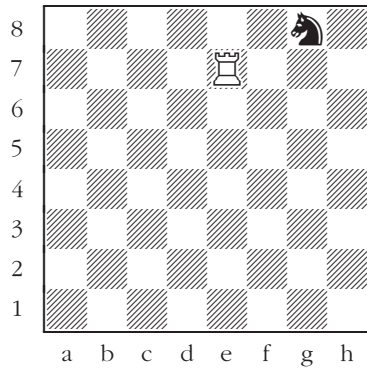
205



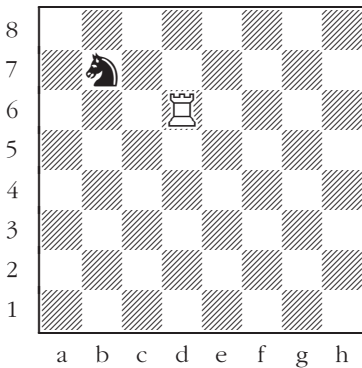
206



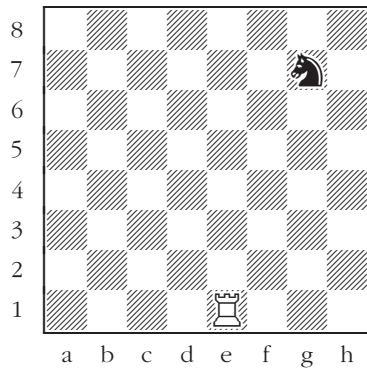
207



208



209

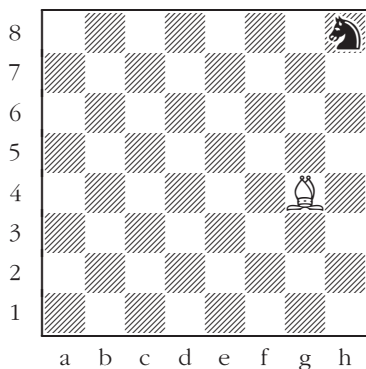


210

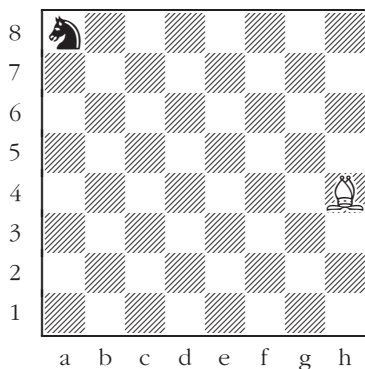
Knights, Queens, Rooks, and Bishops

The bishop tames the knight

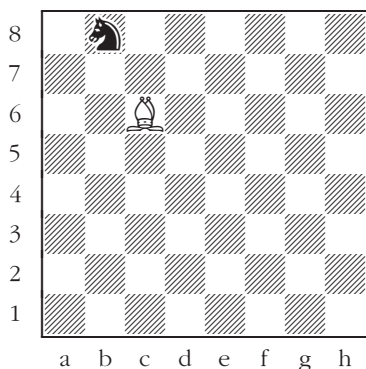
White to move: Catch the black knight in a trap — in one move, take away all of its retreat squares.



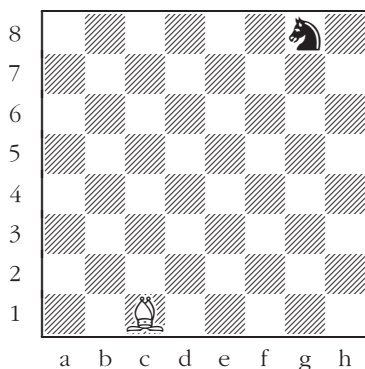
211



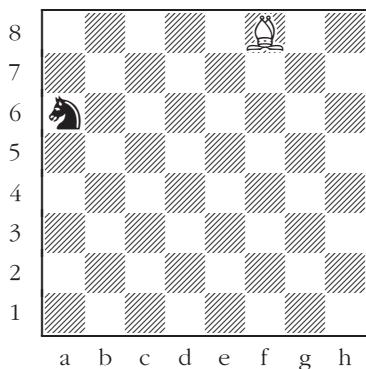
212



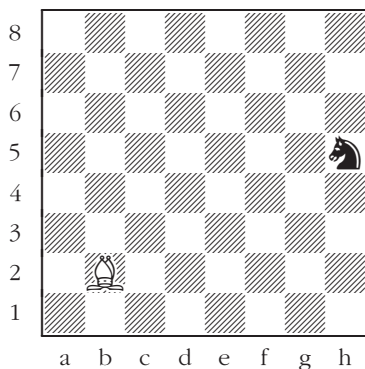
213



214



215



216