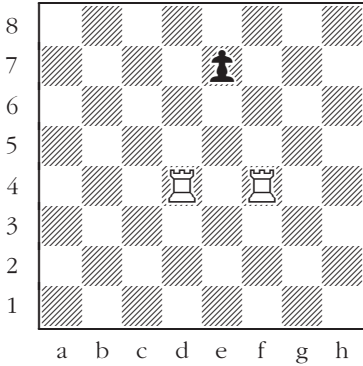


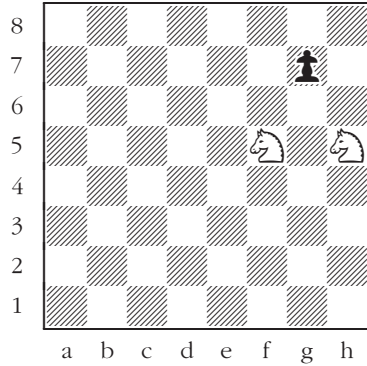
# Pawns, Knights, Queens, Rooks, and Bishops

## Double attack

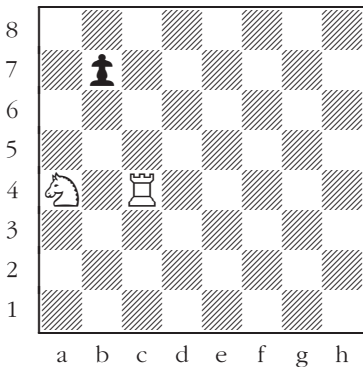
**Black to move:** Attack two white pieces with a pawn.



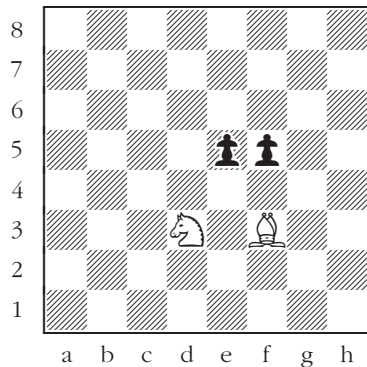
325



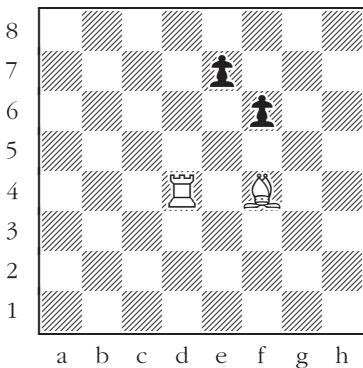
326



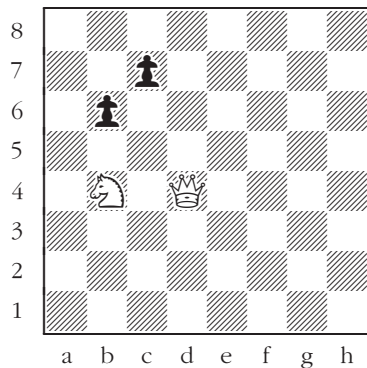
327



328



329

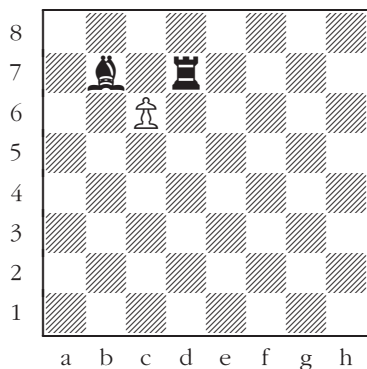


330

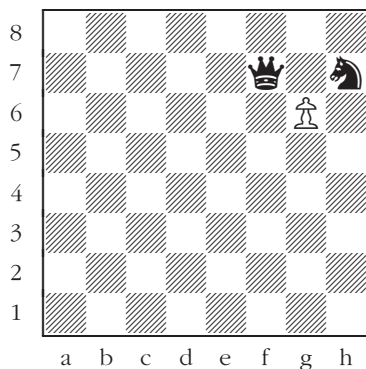
# Pawns, Knights, Queens, Rooks, and Bishops

## Capturing an undefended piece

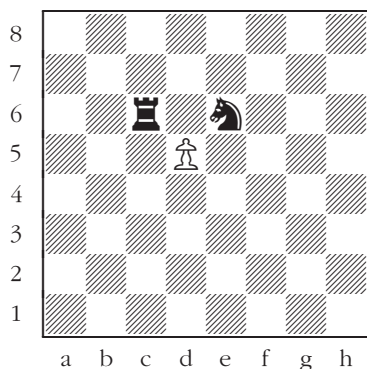
White to move: Take an undefended piece.



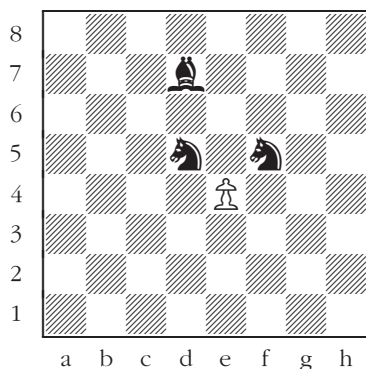
331



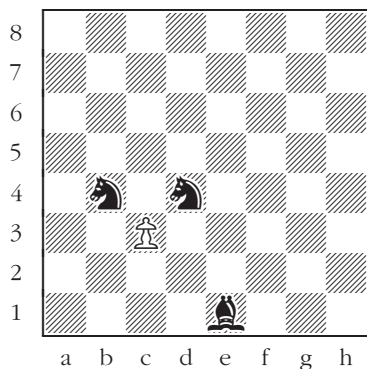
332



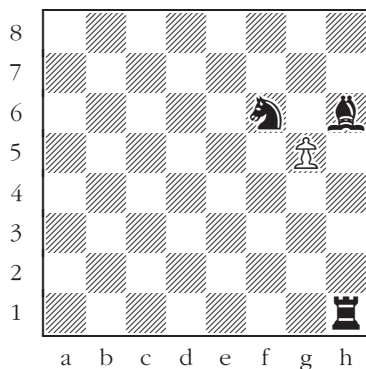
333



334



335



336