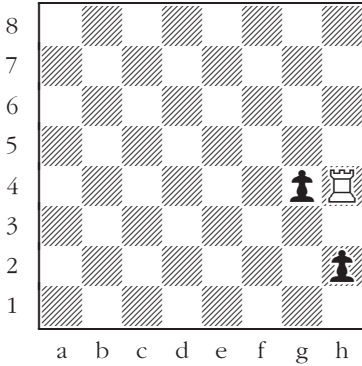


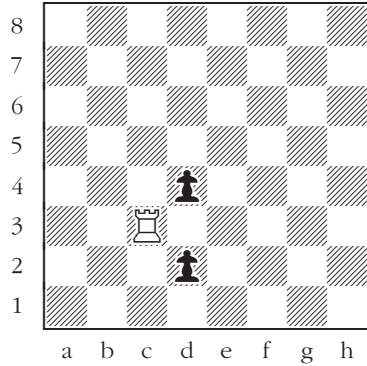
# Pawns, Knights, Queens, Rooks, and Bishops

## Rook against two pawns

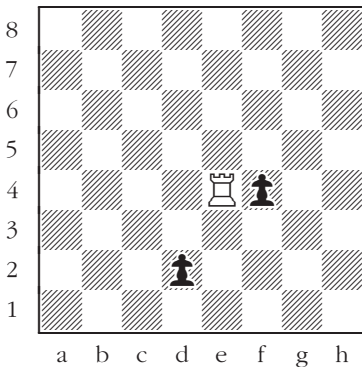
White to move: Find the way to defeat the pawns.



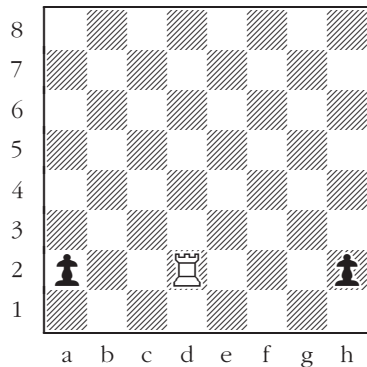
361



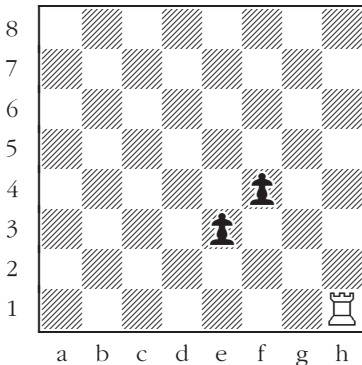
362



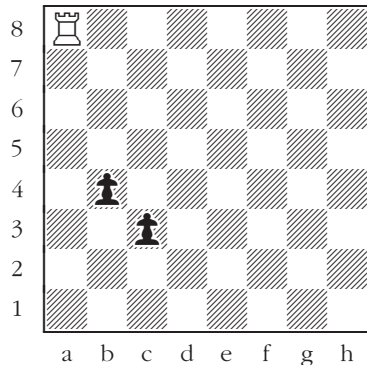
363



364



365

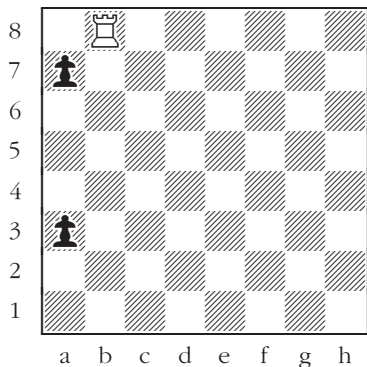


366

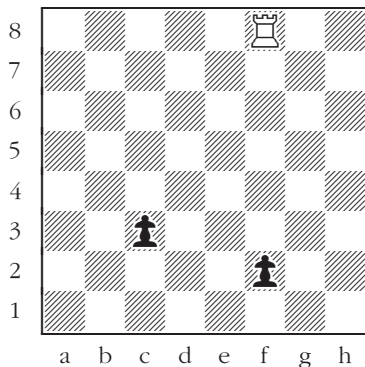
# Pawns, Knights, Queens, Rooks, and Bishops

## Two pawns against a rook

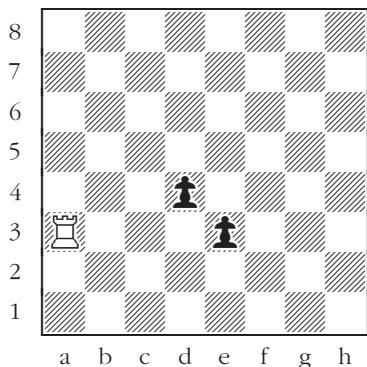
Black to move: Promote at least one of the pawns to a queen.



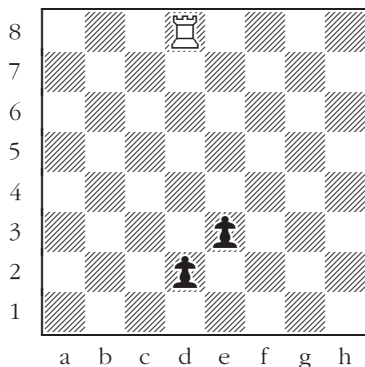
367



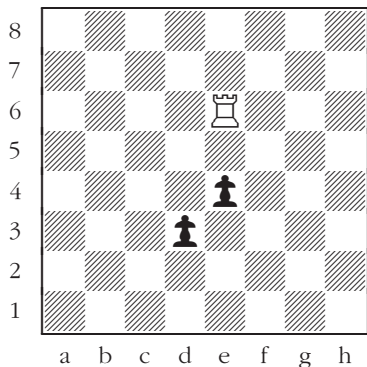
368



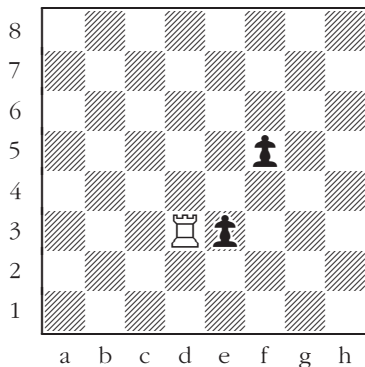
369



370



371



372