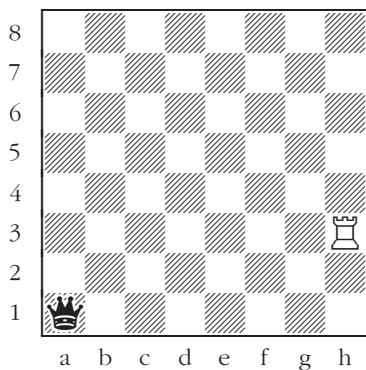


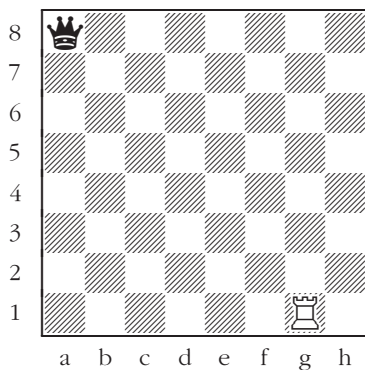
# Queens, Rooks, and Bishops

## Attack on the rook

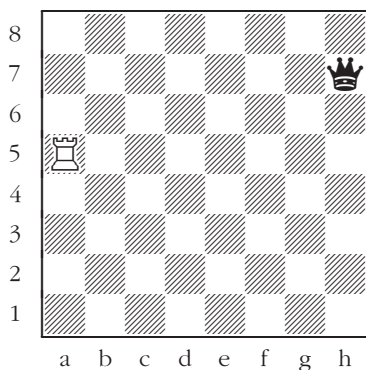
**Black to move:** Attack the rook with the queen (but don't put the queen under attack).



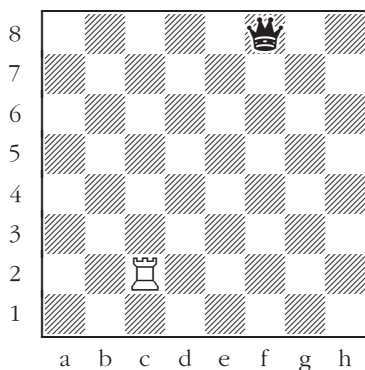
121



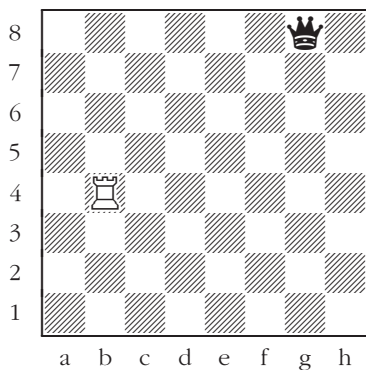
122



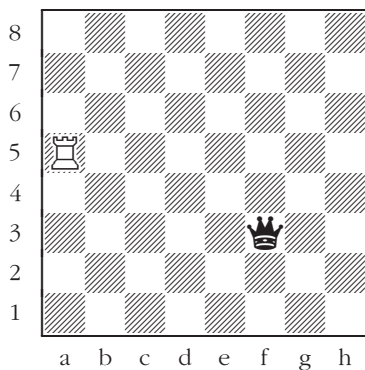
123



124



125



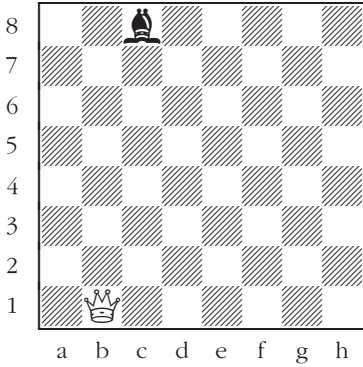
126

# Queens, Rooks, and Bishops

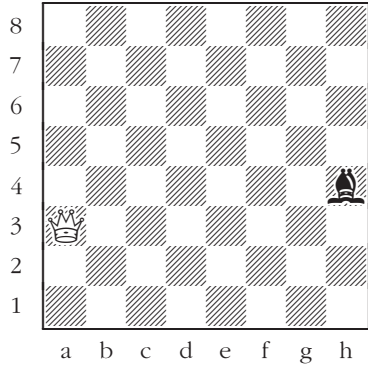
## Attack on the bishop

**White to move:** Attack the bishop with the queen (but don't put the queen under attack).

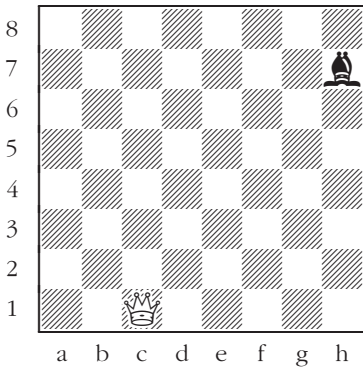
Find three different ways.



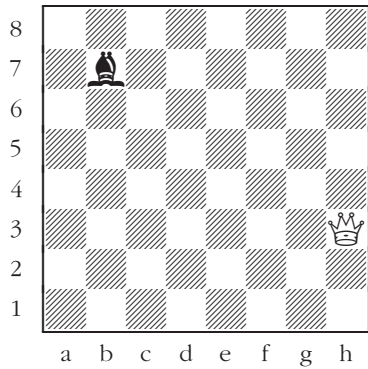
127



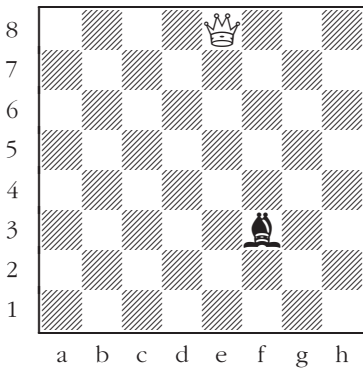
128



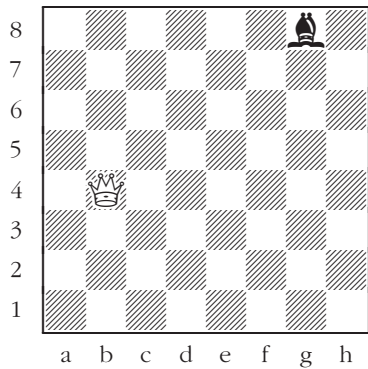
129



130



131



132