

# Quiet moves

## *Tiché tahy*

*349 diagramů*



© Publikuje ŠK Strmilov 2007

<http://www.strmilov.cz/>

Ubytování ve Strmilově

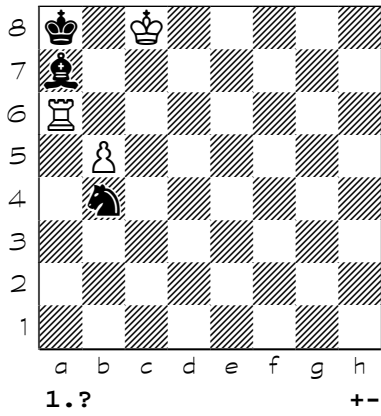
<http://ubytovani.strmilov.cz/>

Město Strmilov

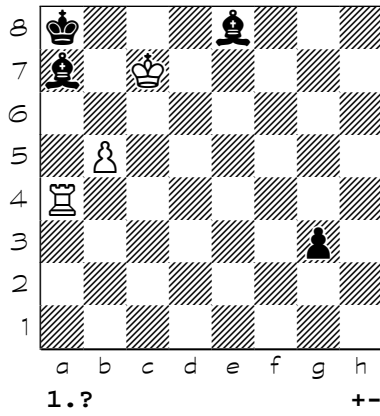
<http://mesto.strmilov.cz/>

Chess diagrams

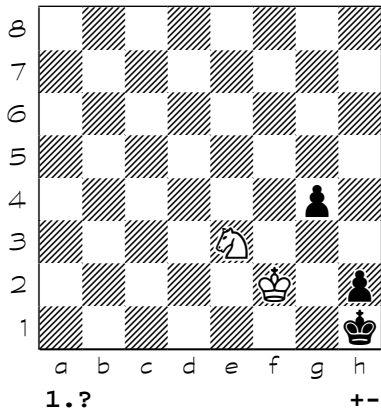
1



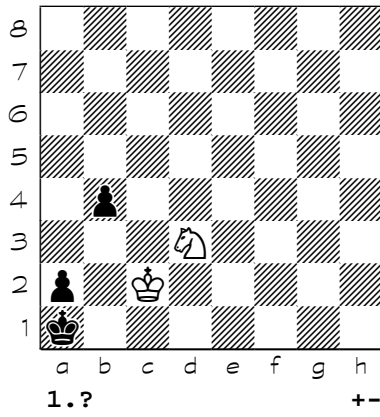
2



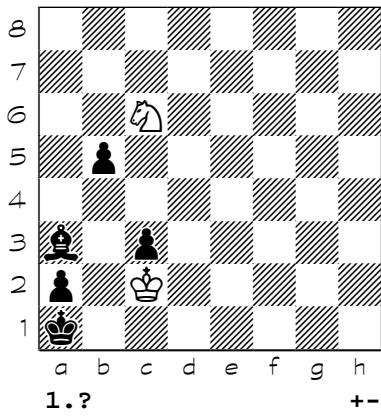
3



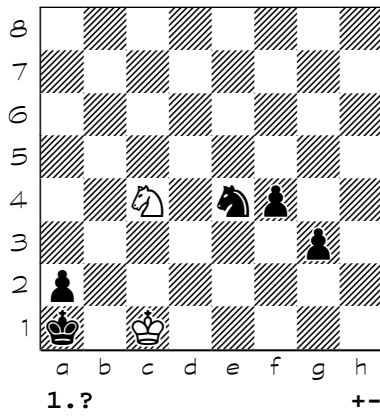
4



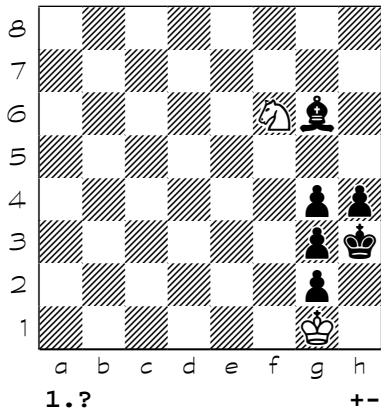
5



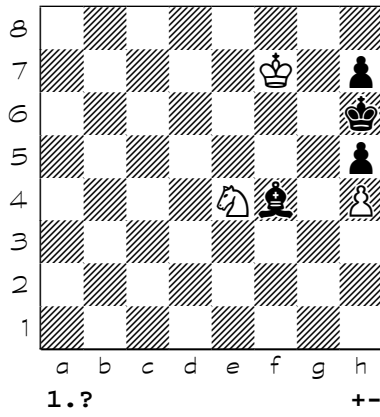
6



7

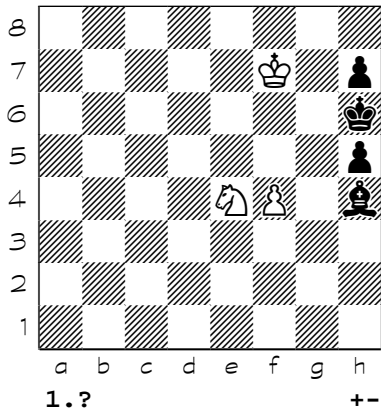


8

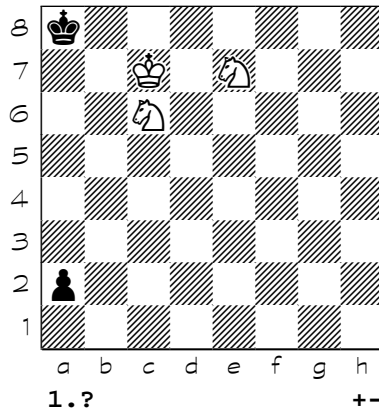


Chess diagrams

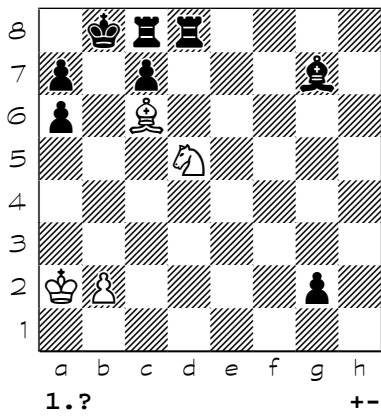
9



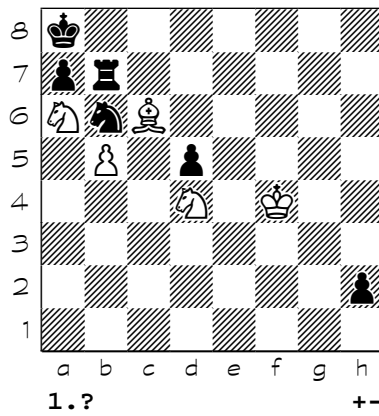
10



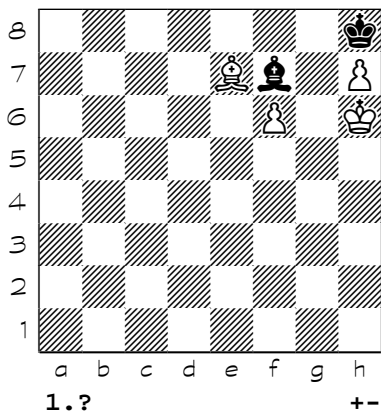
11



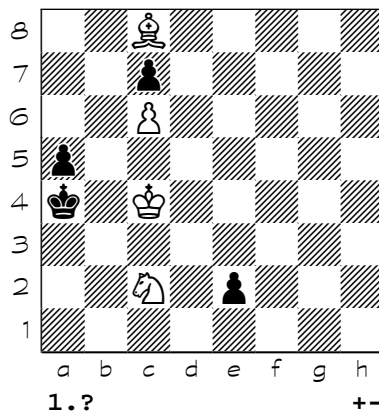
12



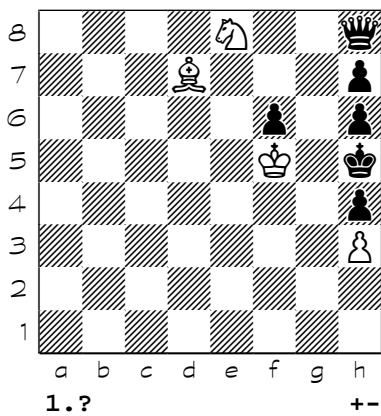
13



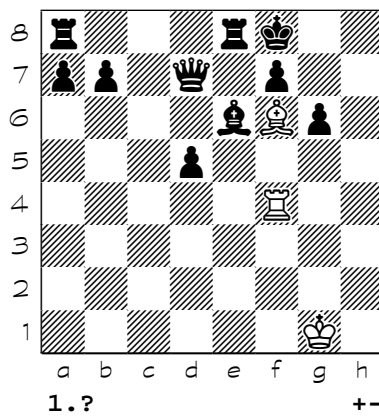
14



15

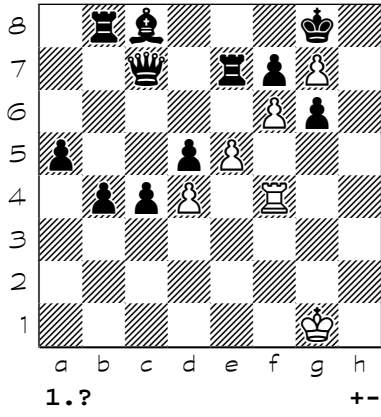


16

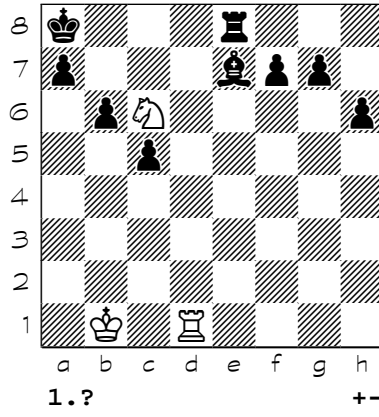


Chess diagrams

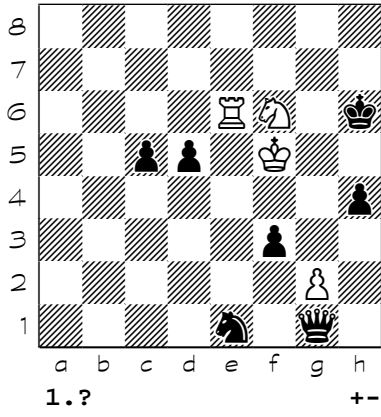
17



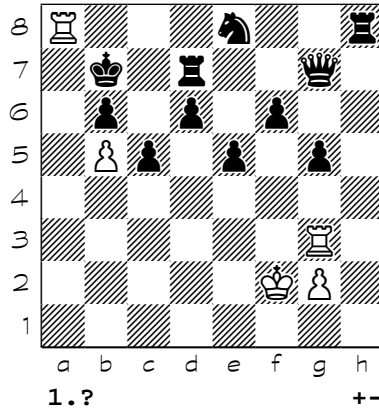
18



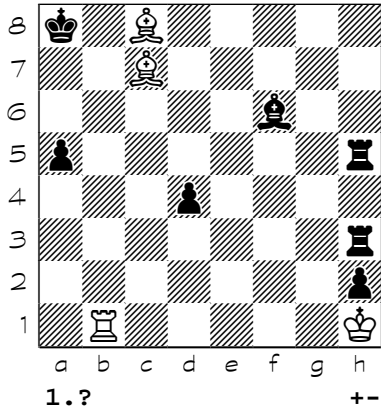
19



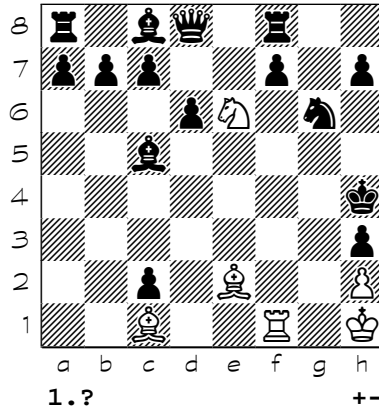
20



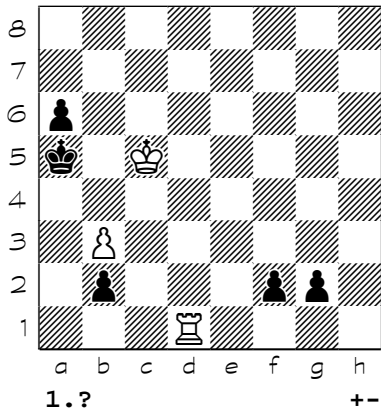
21



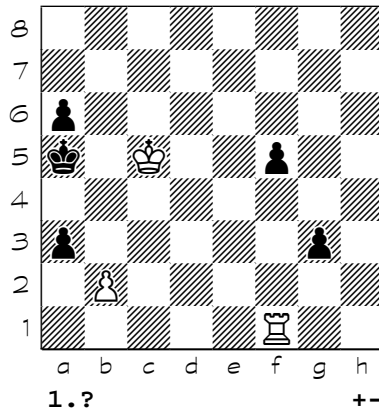
22



23

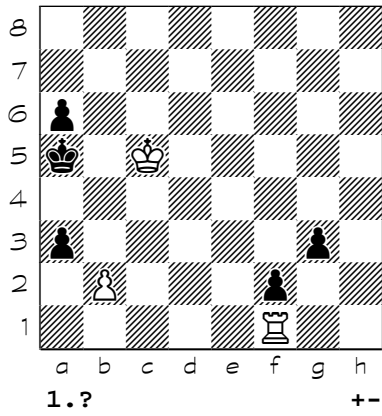


24

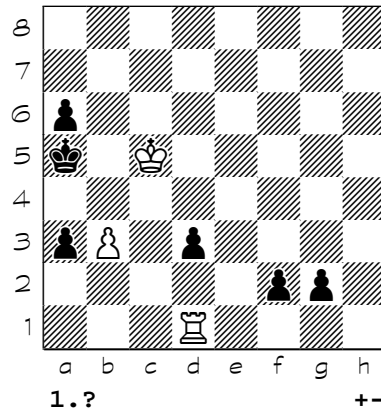


Chess diagrams

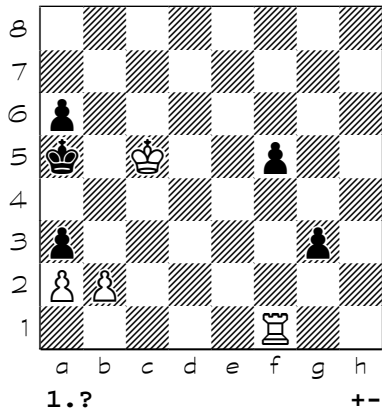
25



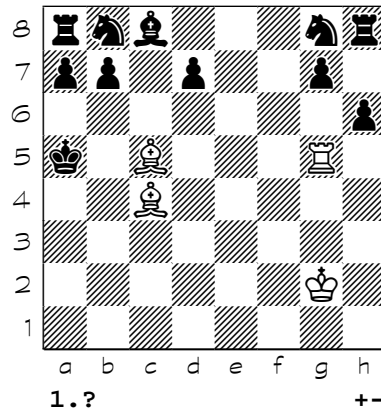
26



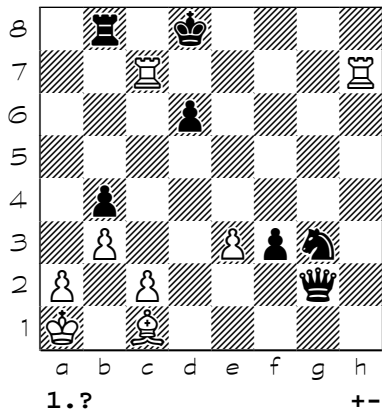
27



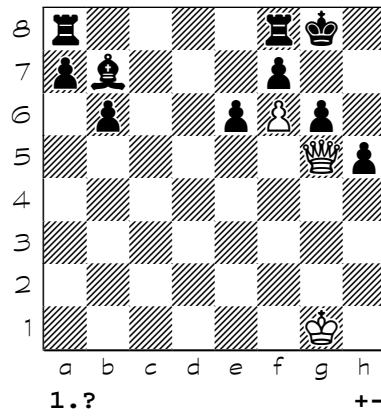
28



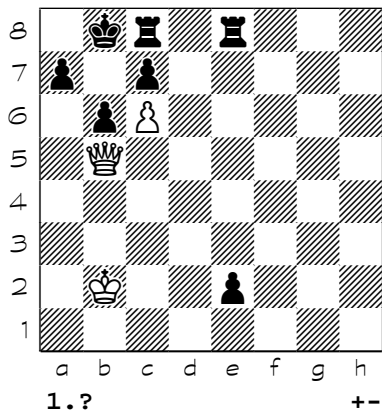
29



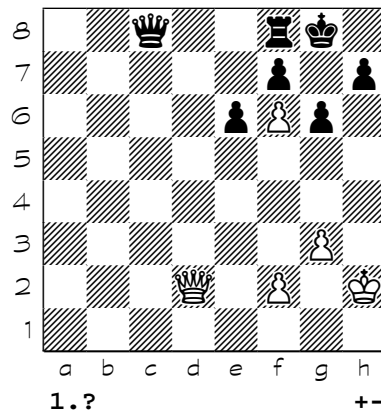
30



31

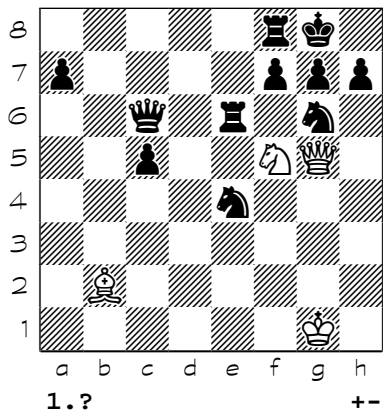


32

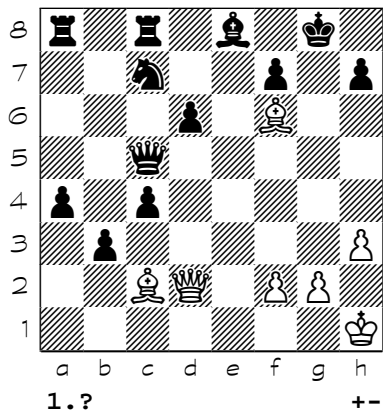


Chess diagrams

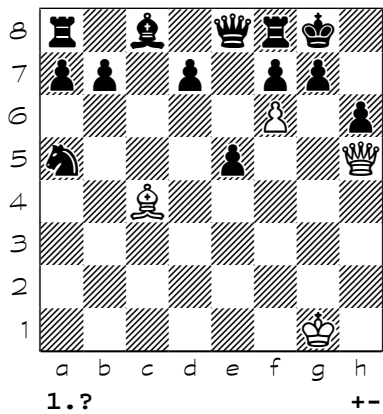
33



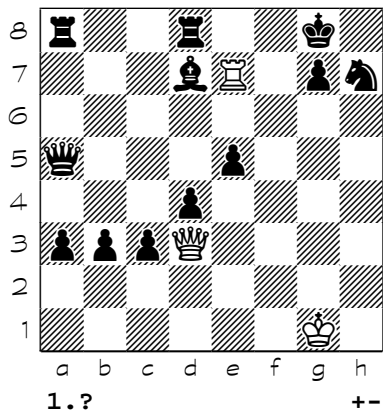
34



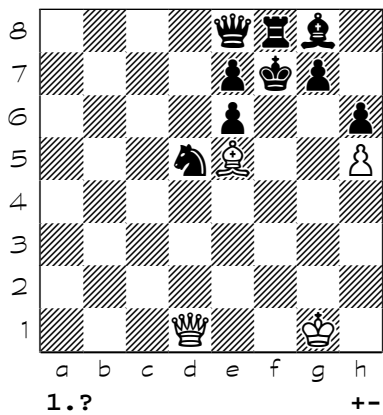
35



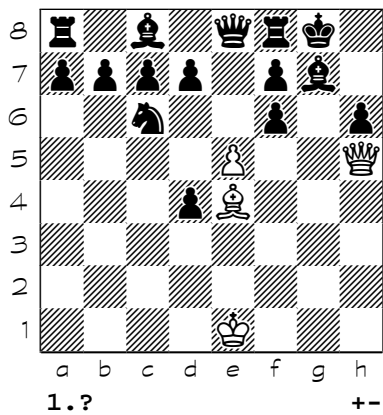
36



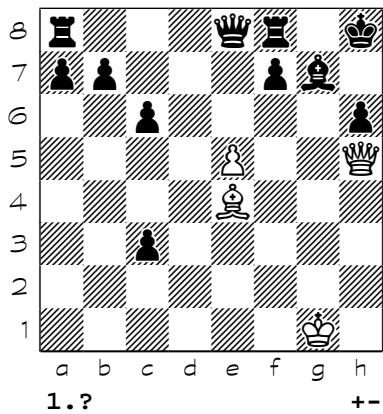
37



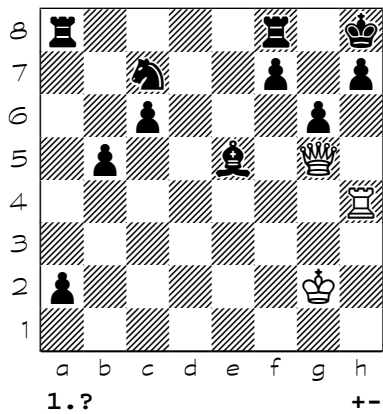
38



39

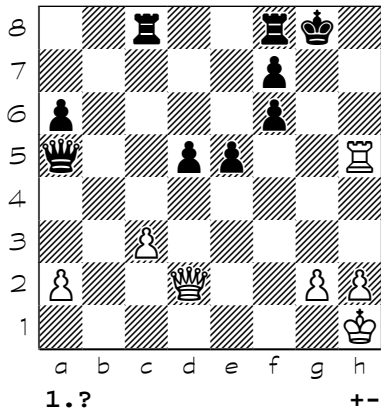


40

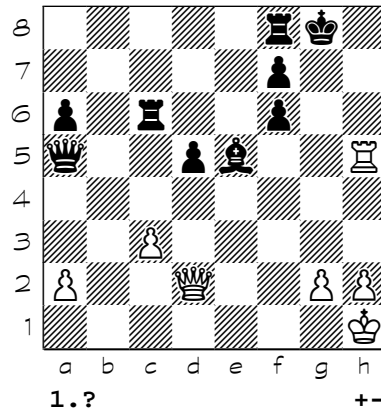


Chess diagrams

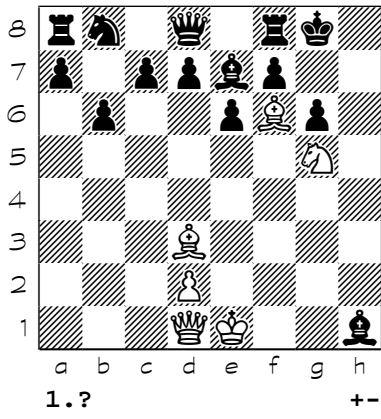
41



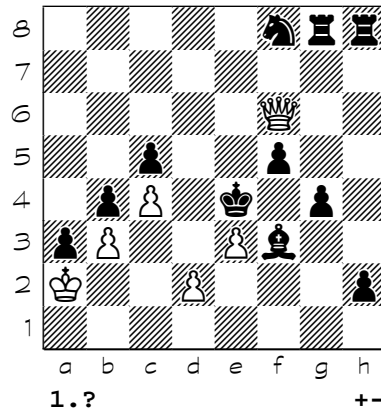
42



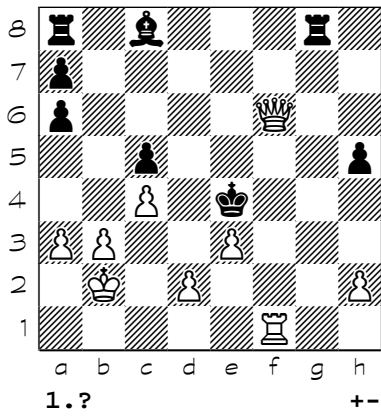
43



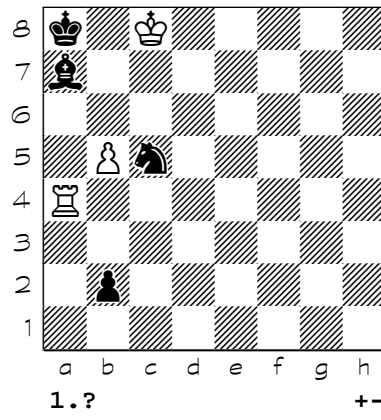
44



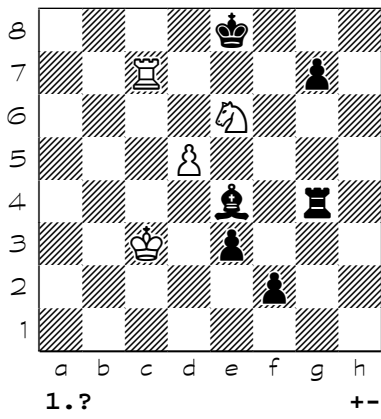
45



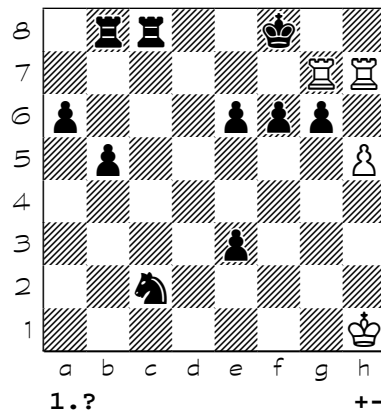
46



47

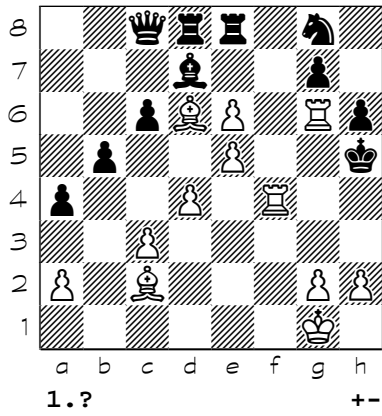


48

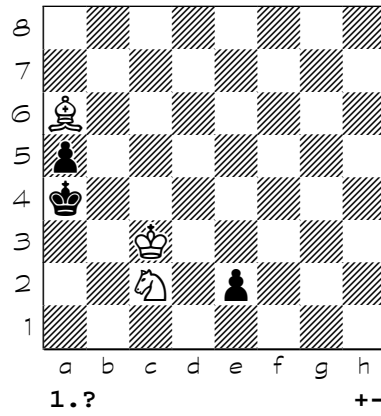


Chess diagrams

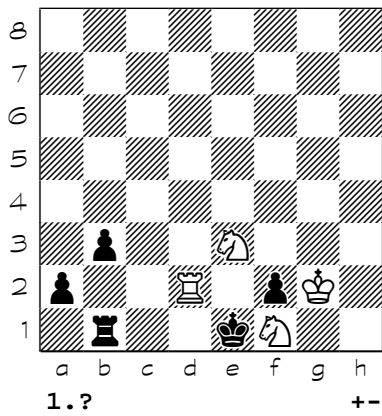
49



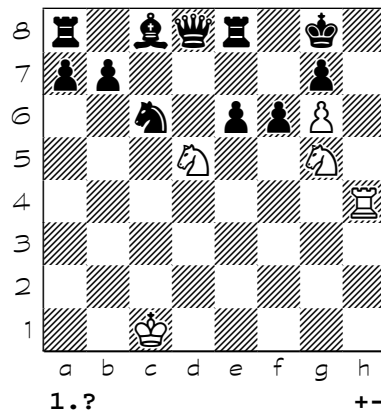
50



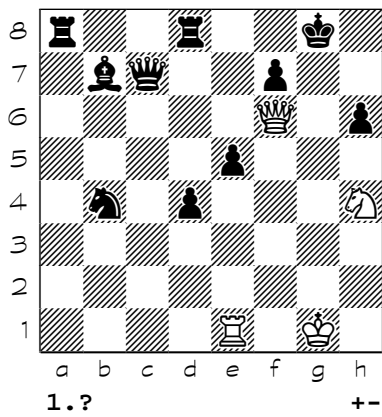
51



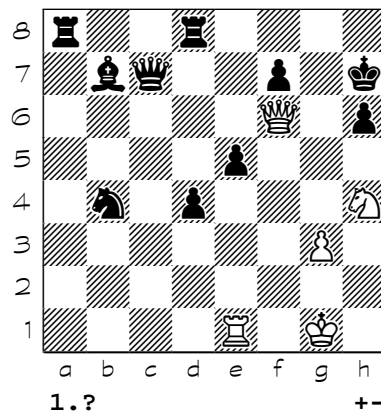
52



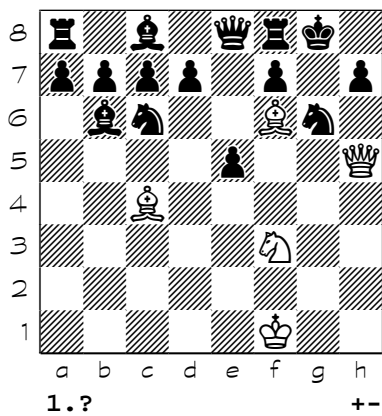
53



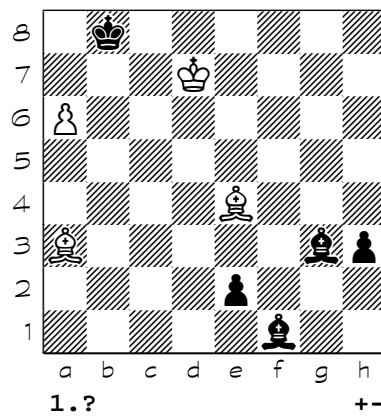
54



55



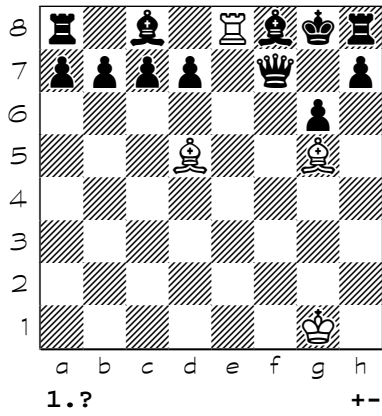
56



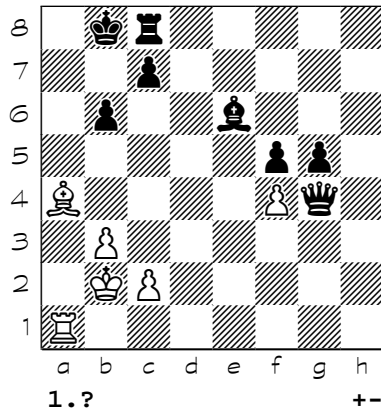


Chess diagrams

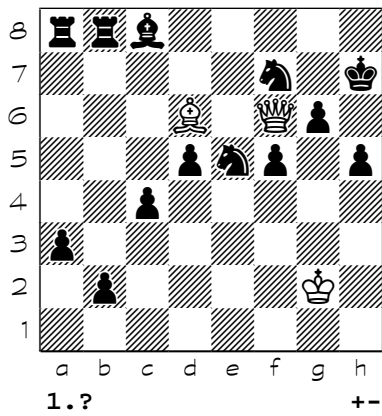
57



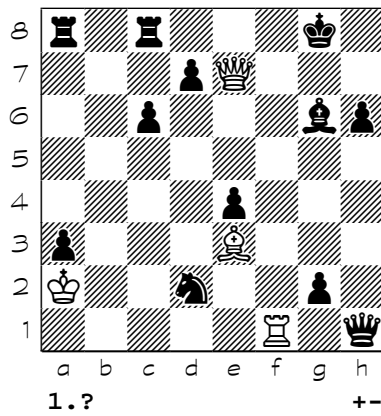
58



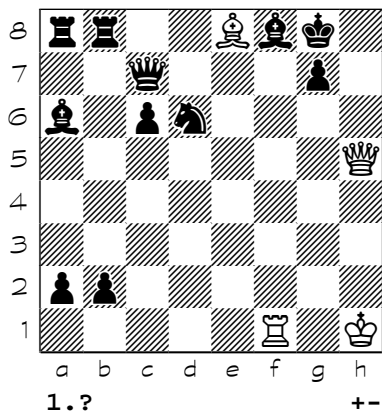
59



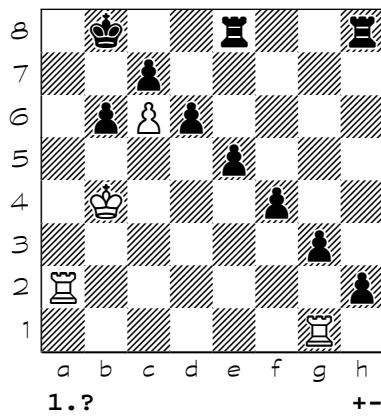
60



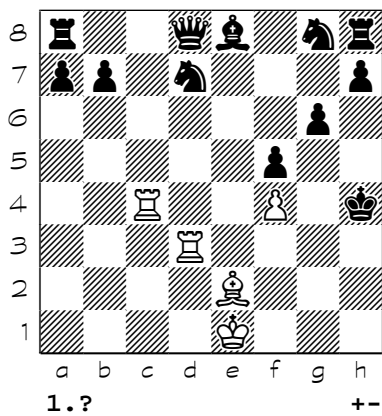
61



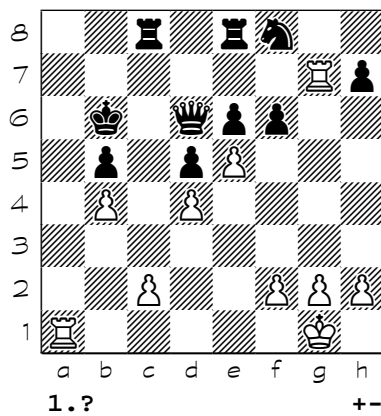
62



63

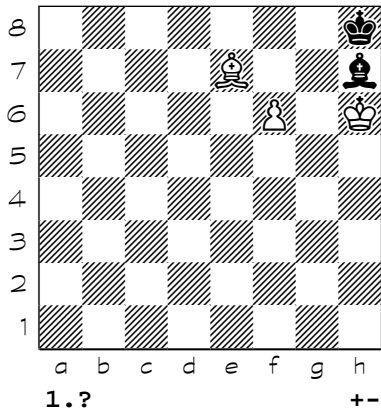


64

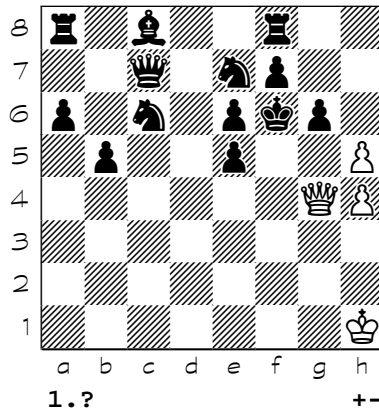


Chess diagrams

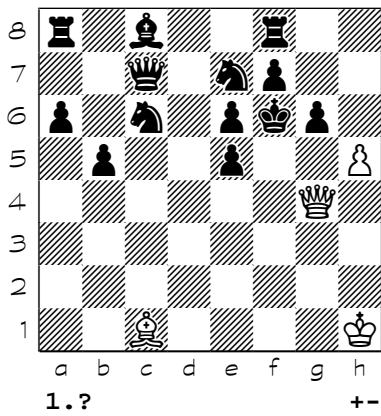
65



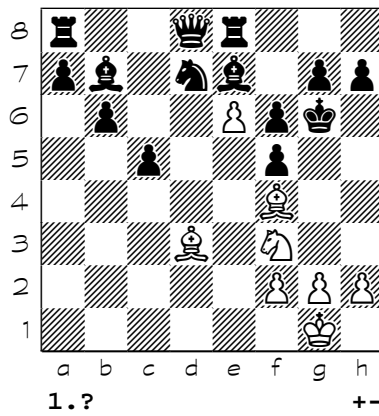
66



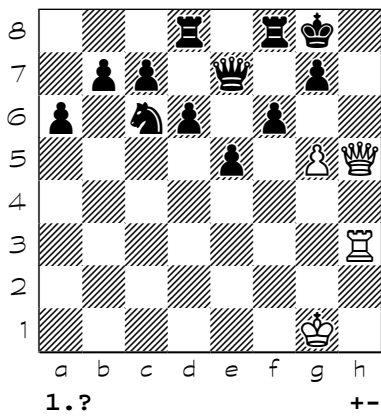
67



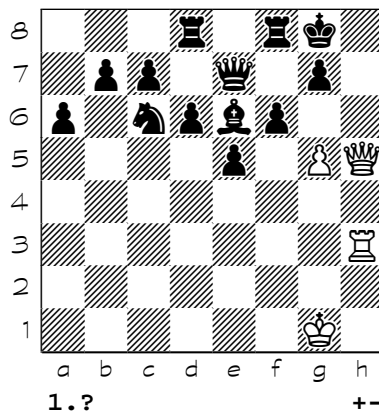
68



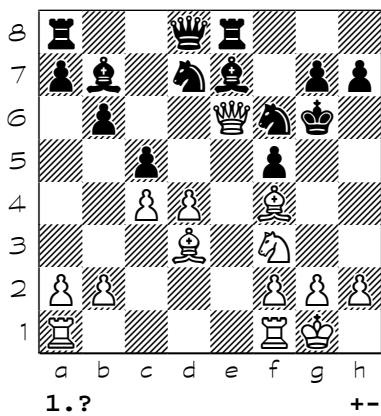
69



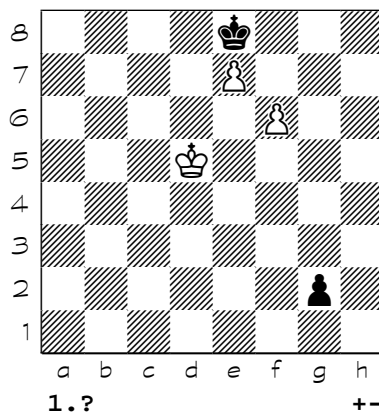
70



71

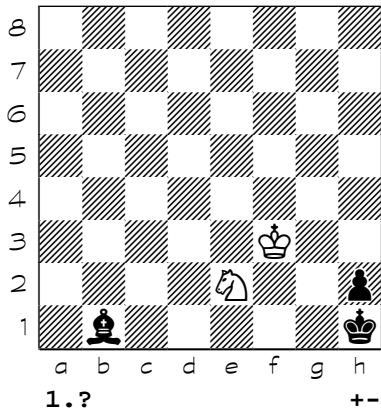


72

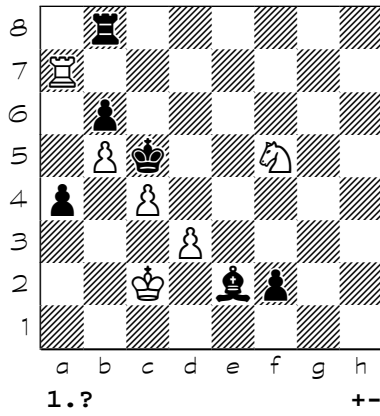


Chess diagrams

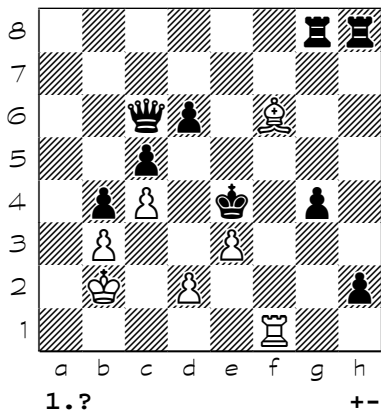
73



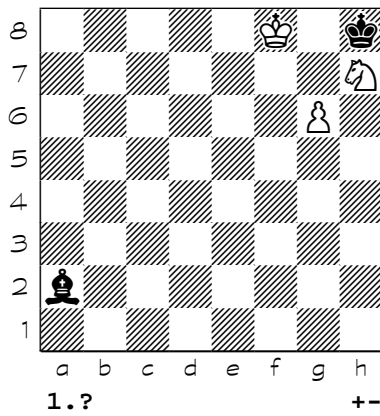
74



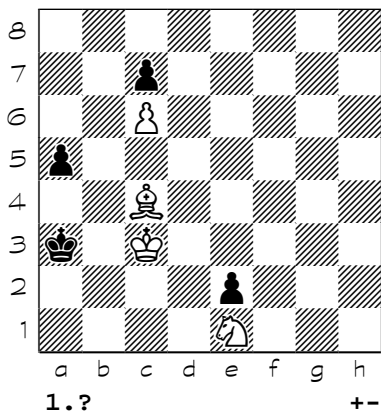
75



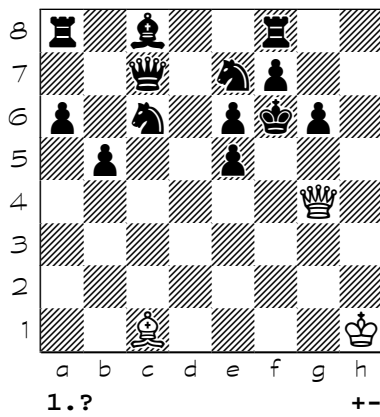
76



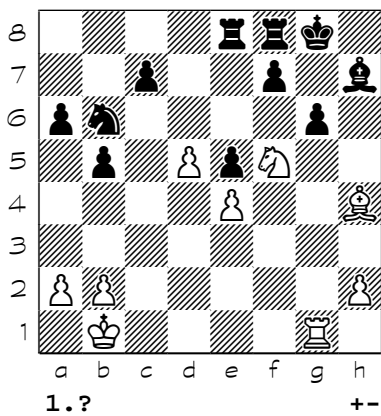
77



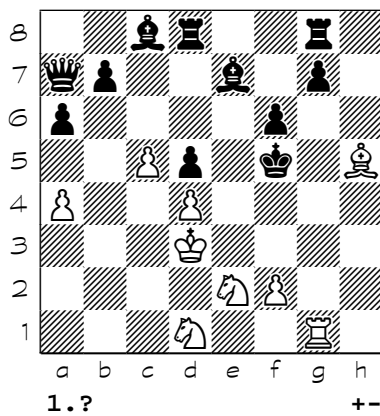
78



79



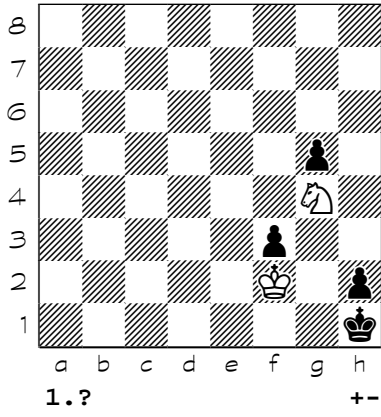
80



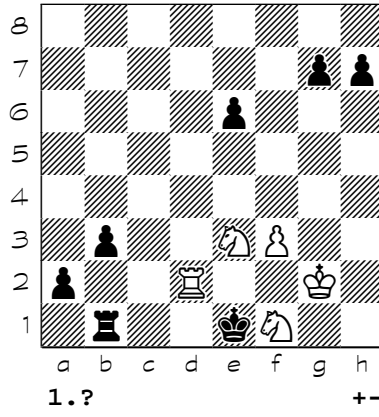


Chess diagrams

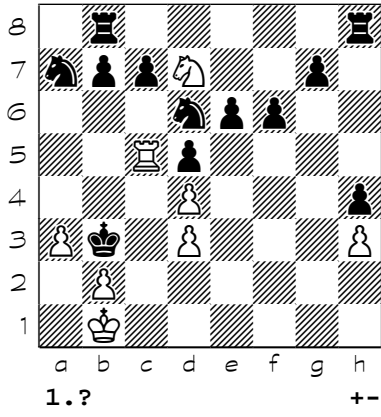
89



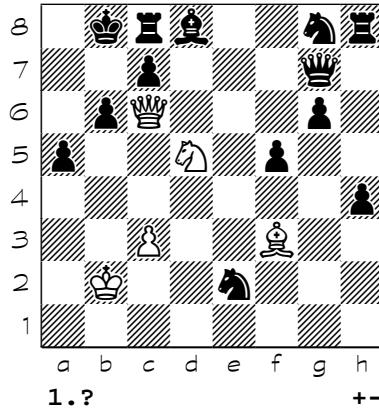
90



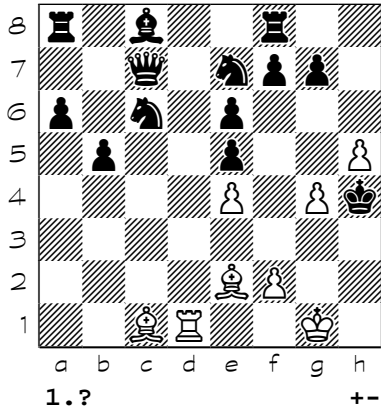
91



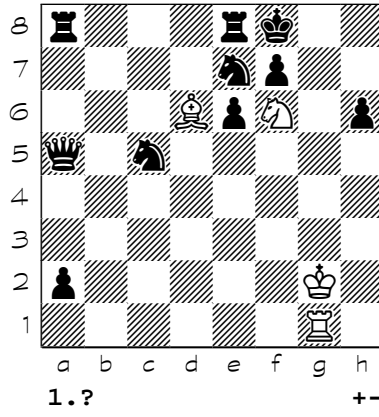
92



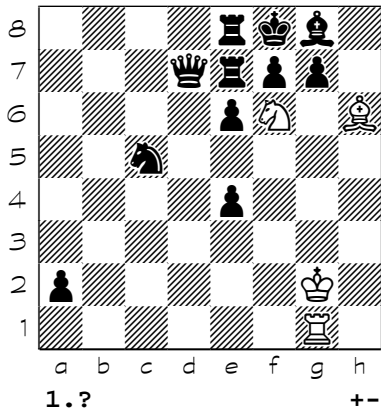
93



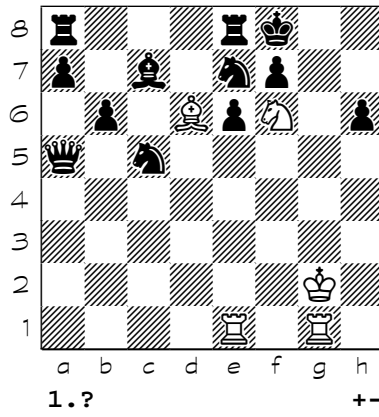
94



95



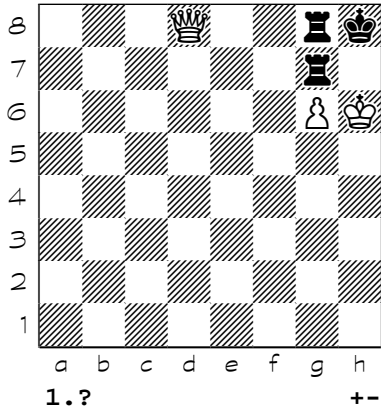
96



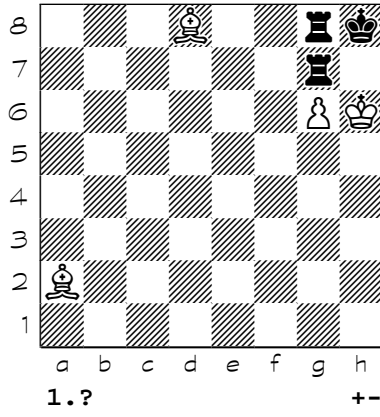


Chess diagrams

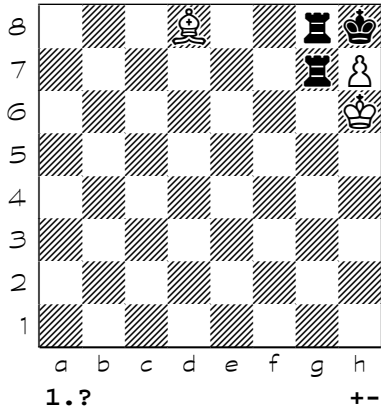
105



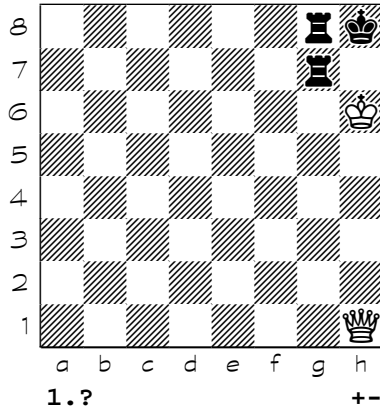
106



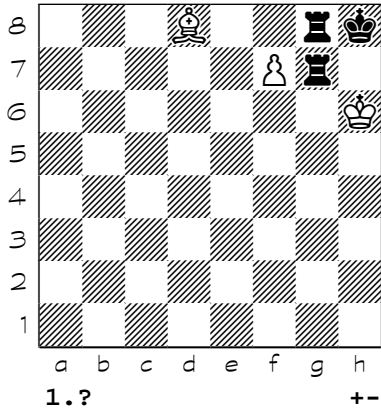
107



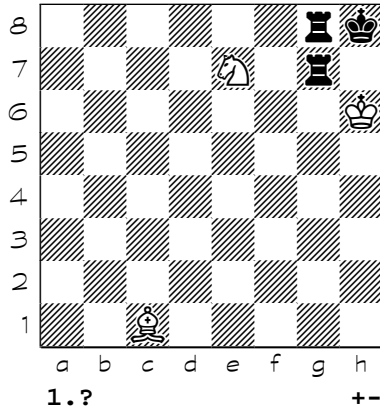
108



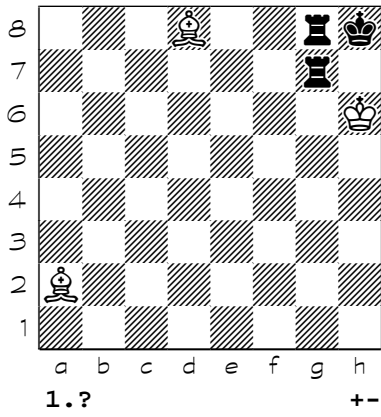
109



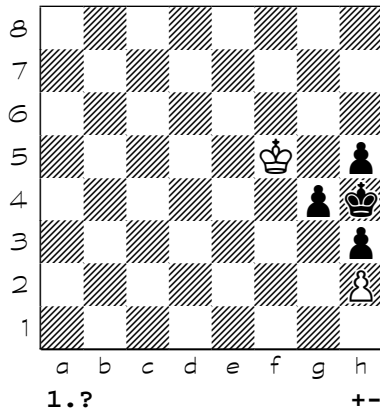
110



111

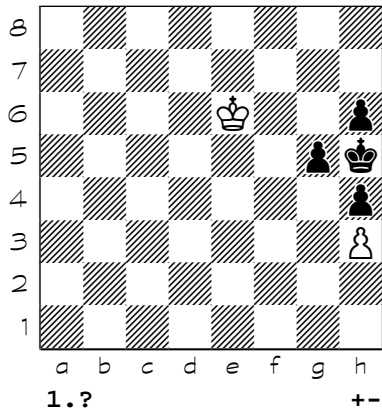


112

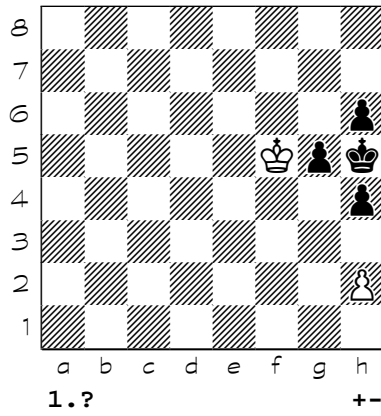


Chess diagrams

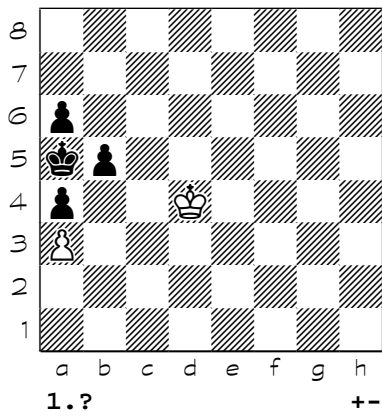
113



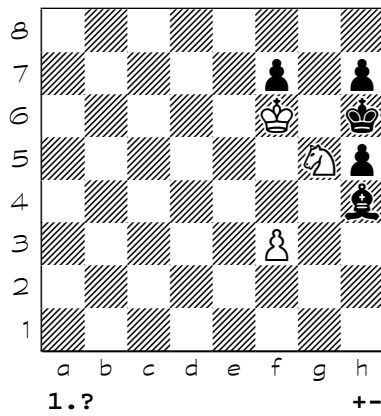
114



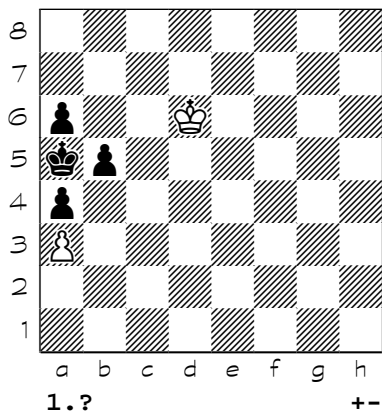
115



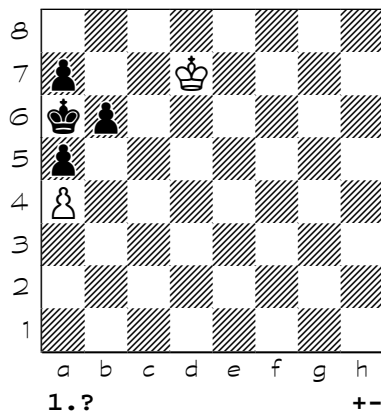
116



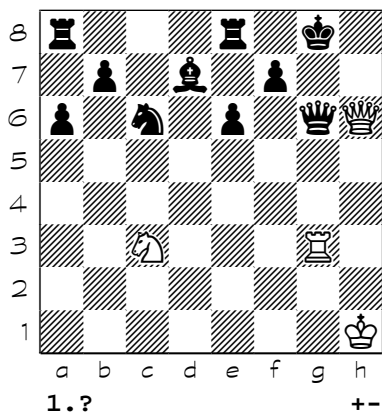
117



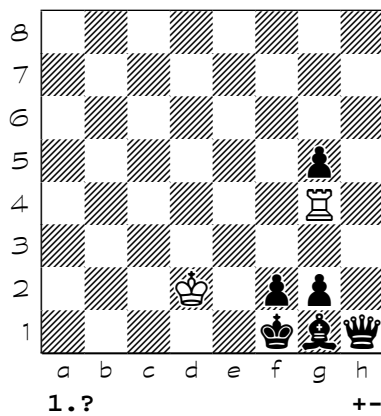
118



119



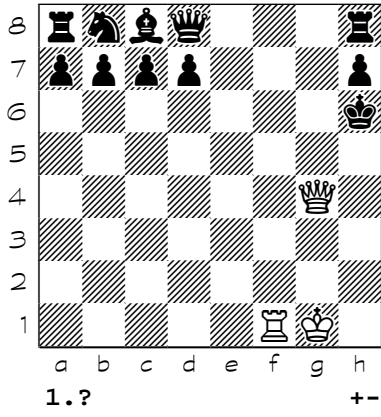
120



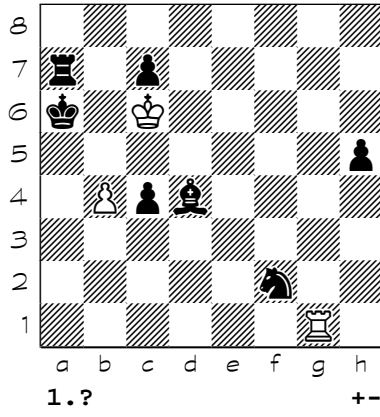


Chess diagrams

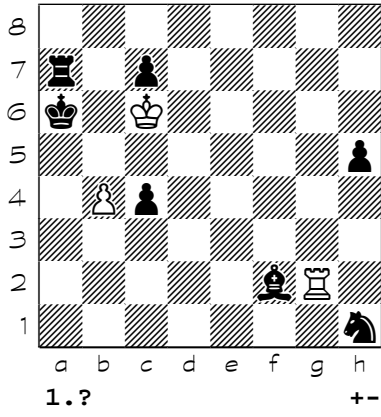
121



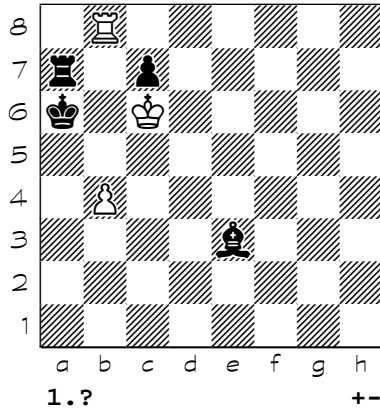
122



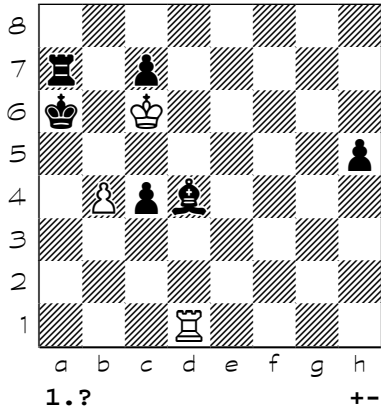
123



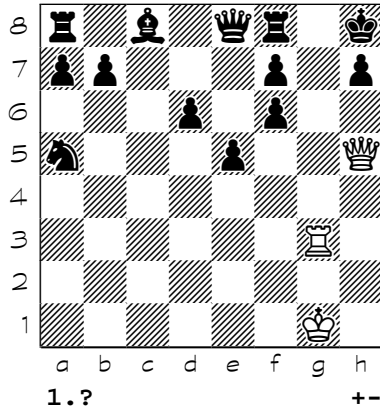
124



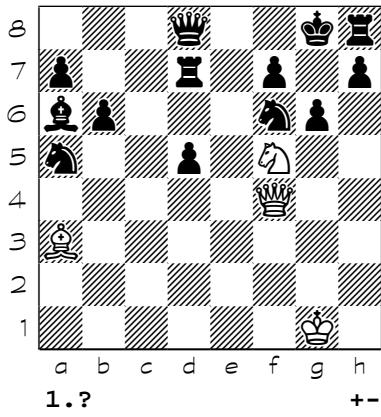
125



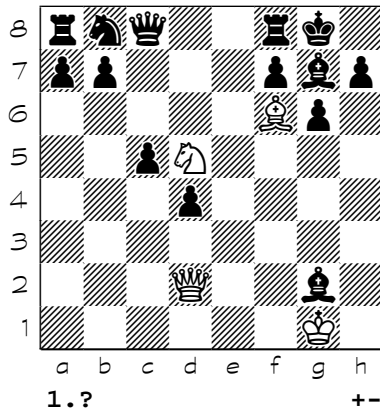
126



127

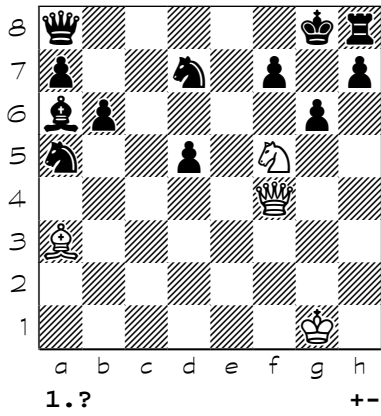


128

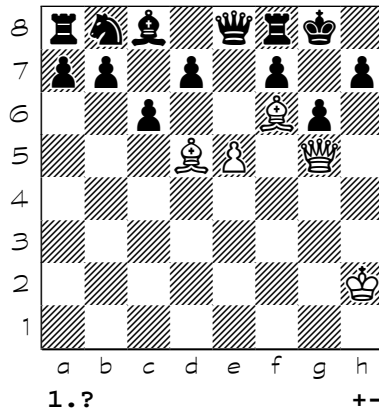


Chess diagrams

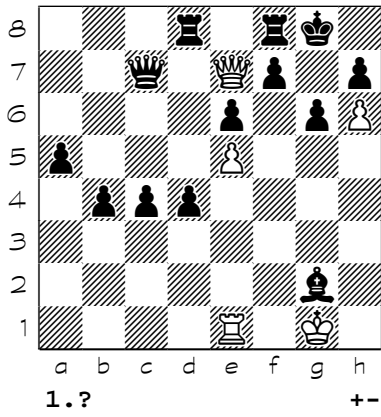
129



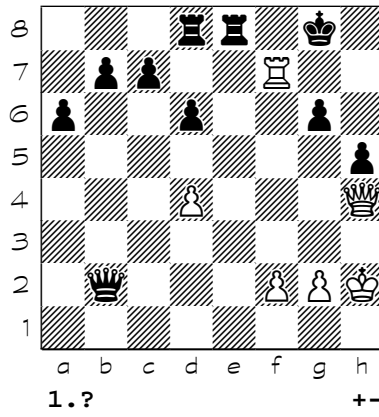
130



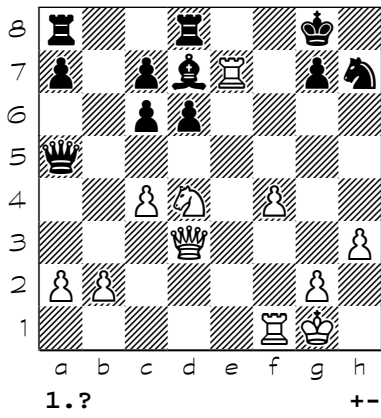
131



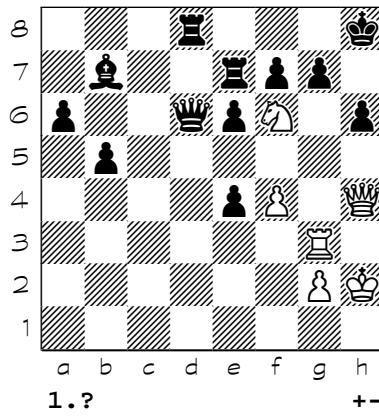
132



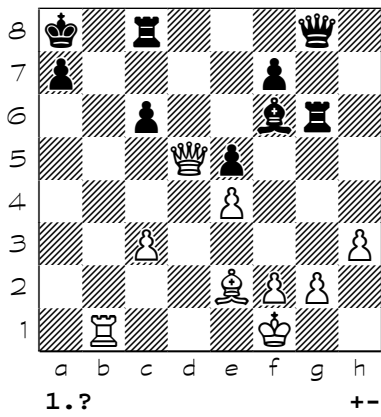
133



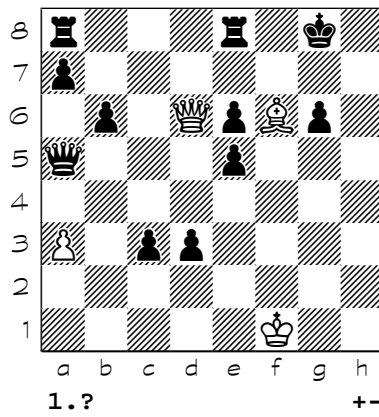
134



135

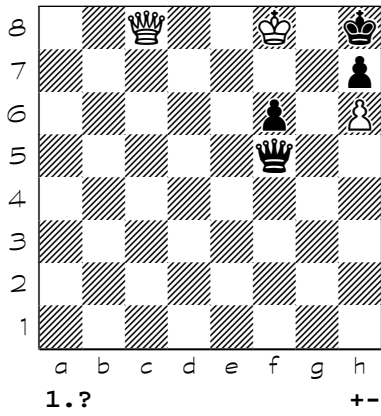


136

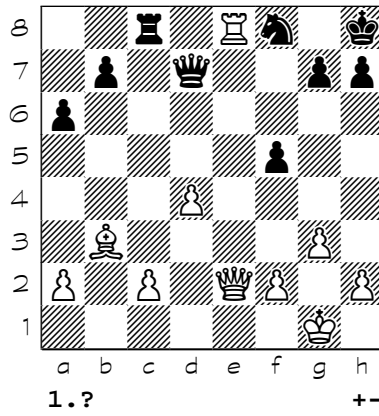


Chess diagrams

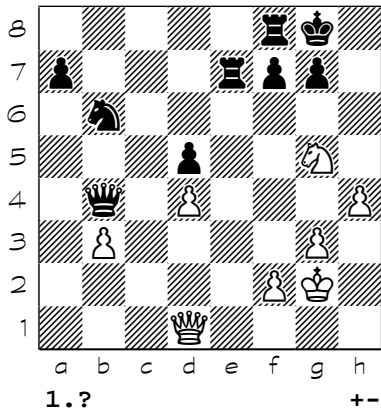
137



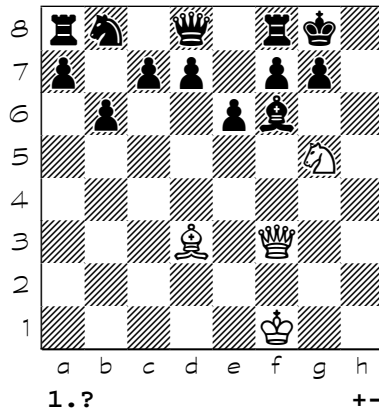
138



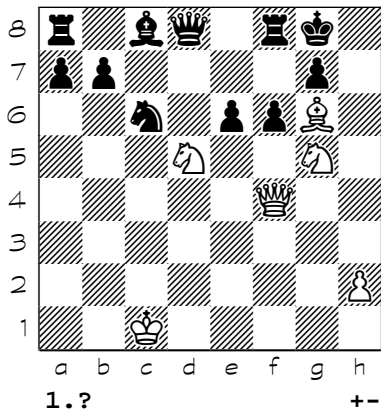
139



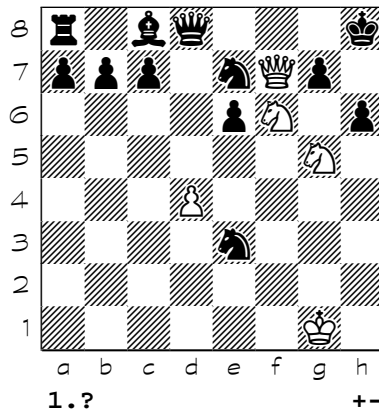
140



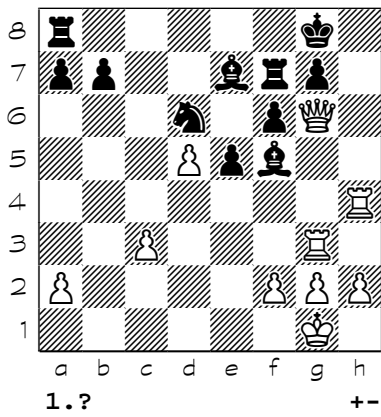
141



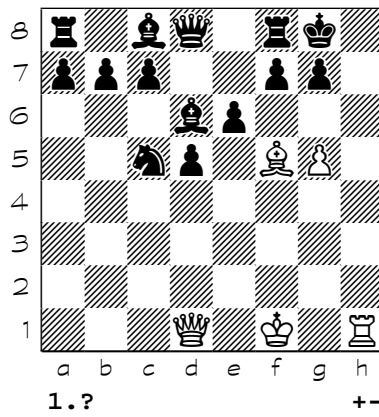
142



143

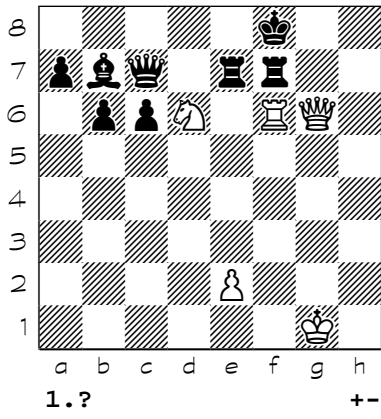


144

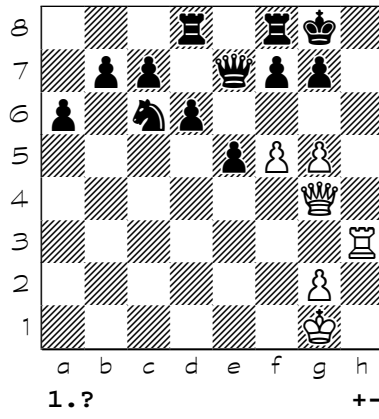


Chess diagrams

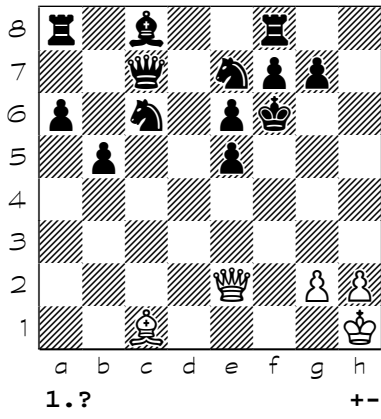
145



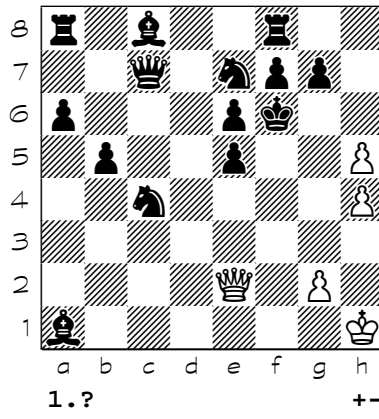
146



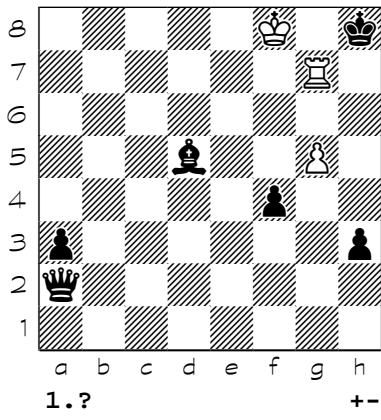
147



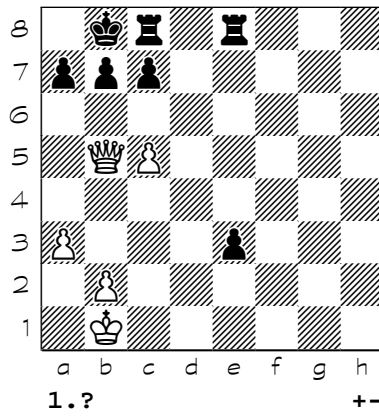
148



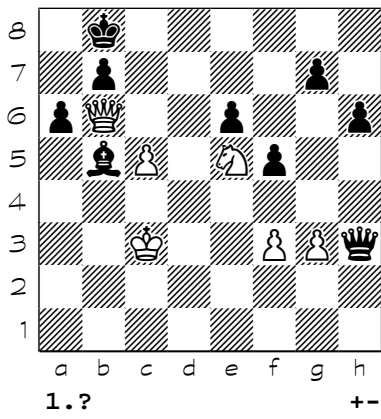
149



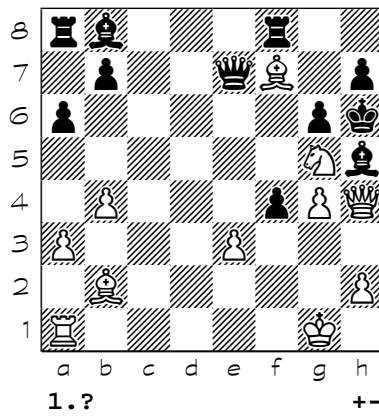
150



151

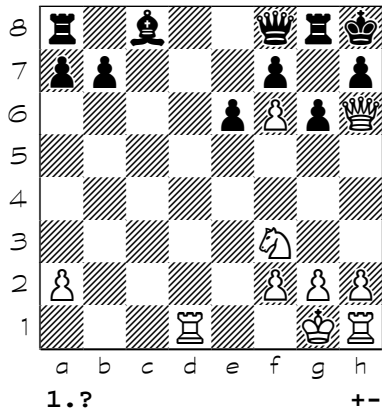


152

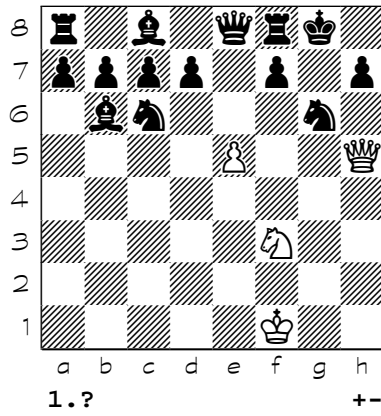


Chess diagrams

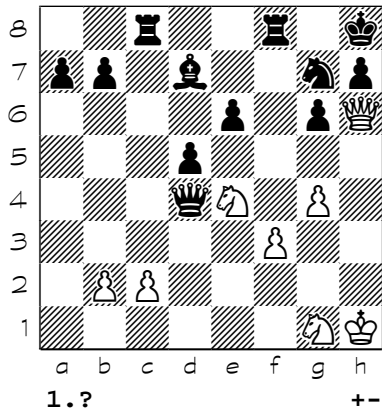
153



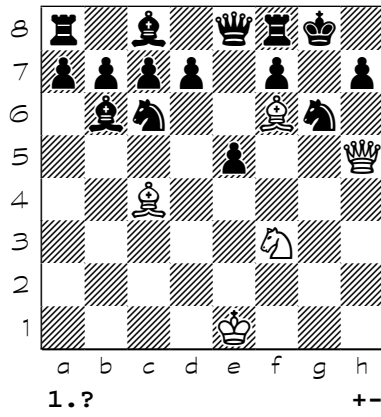
154



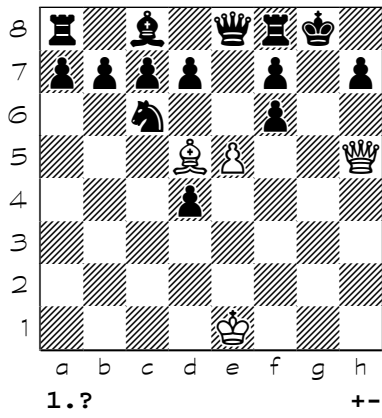
155



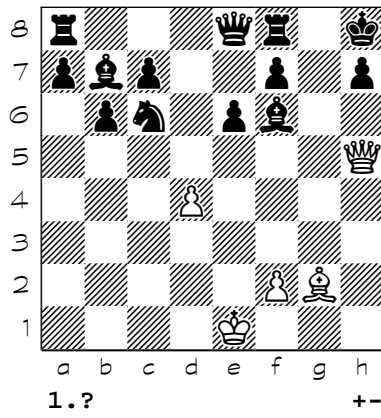
156



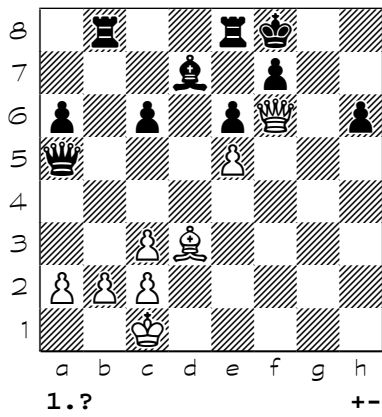
157



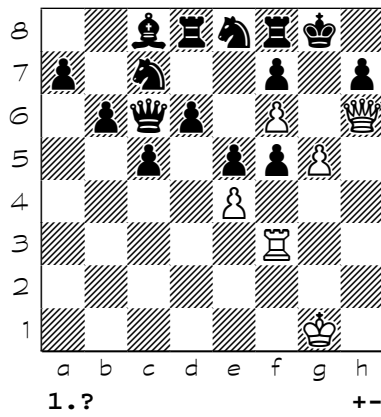
158



159

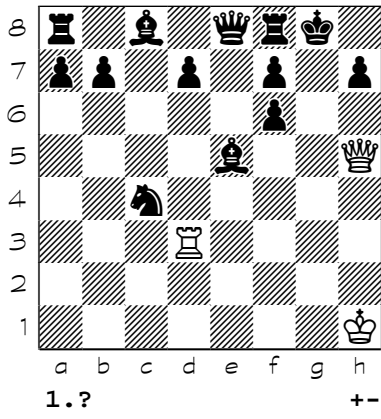


160

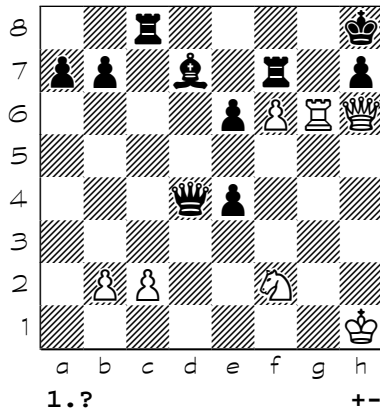


Chess diagrams

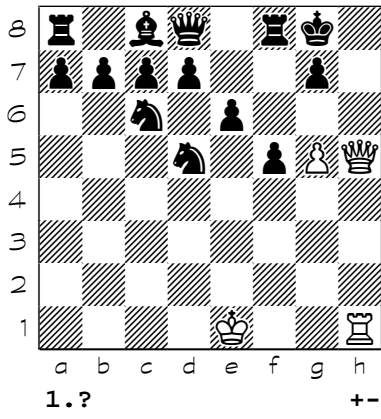
161



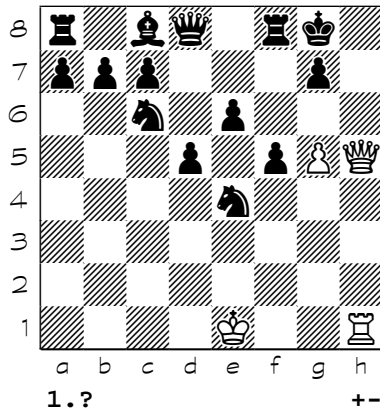
162



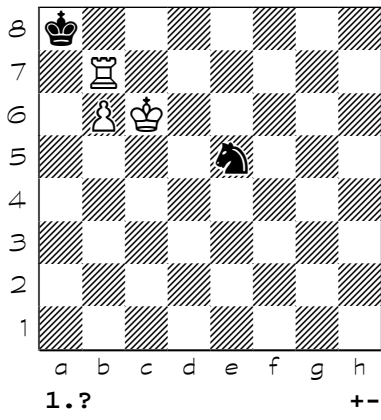
163



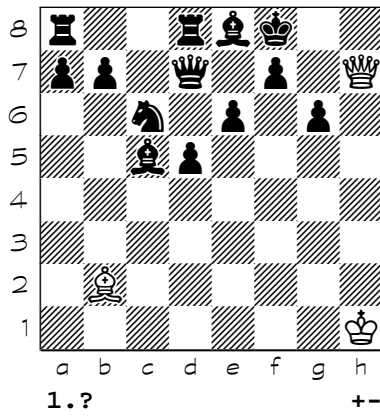
164



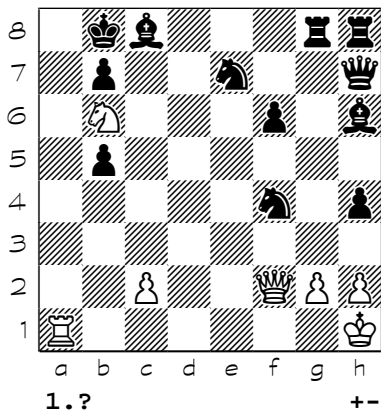
165



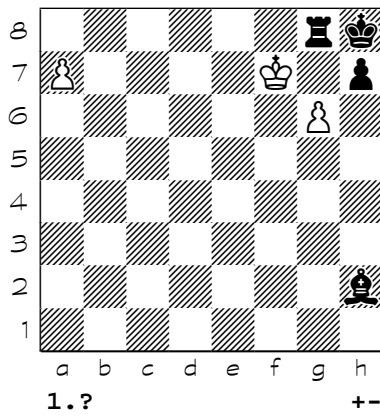
166



167



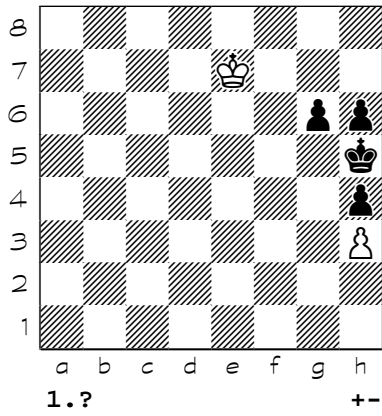
168



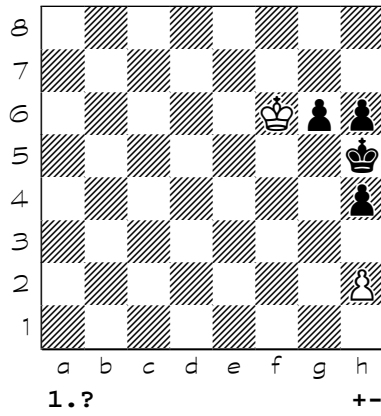


Chess diagrams

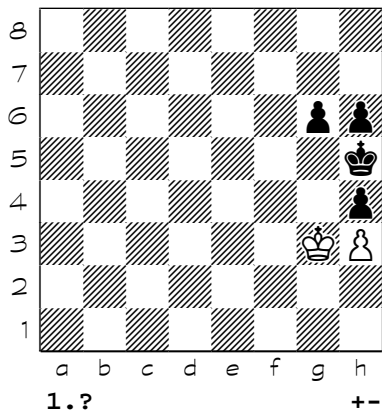
177



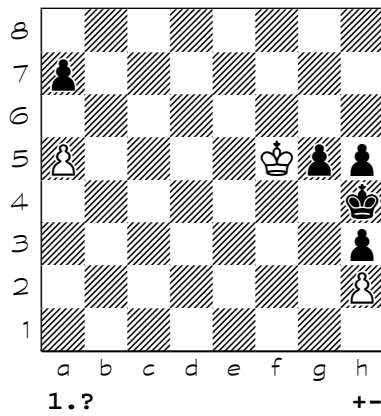
178



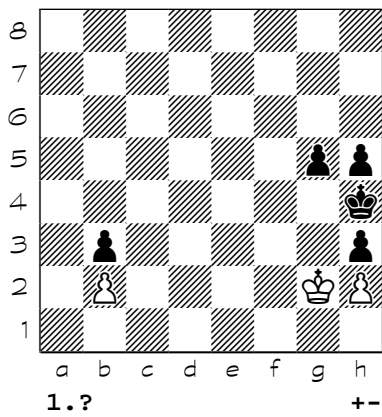
179



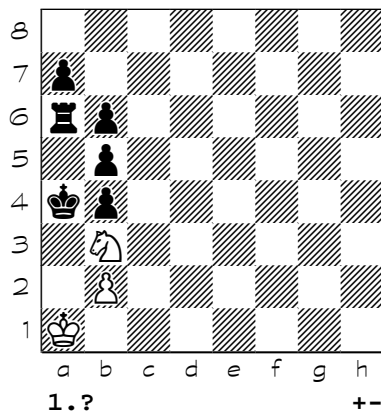
180



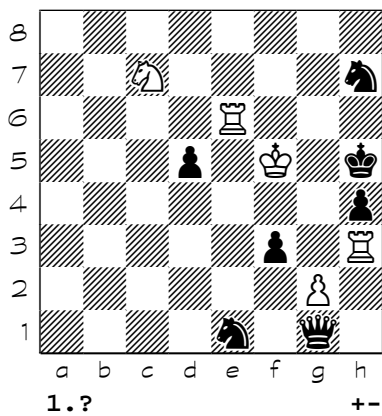
181



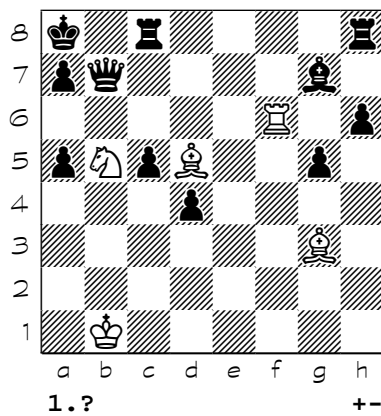
182



183



184

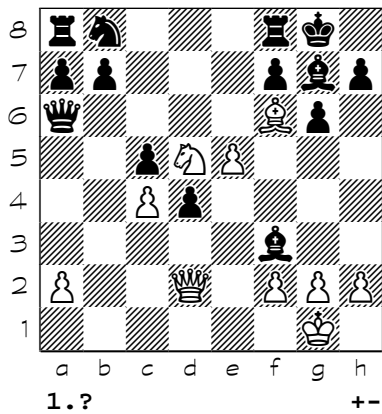




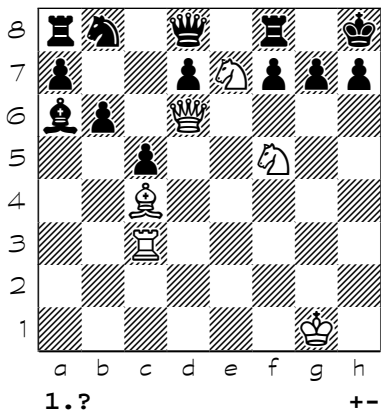


Chess diagrams

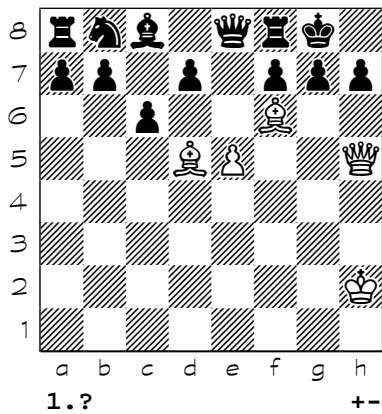
193



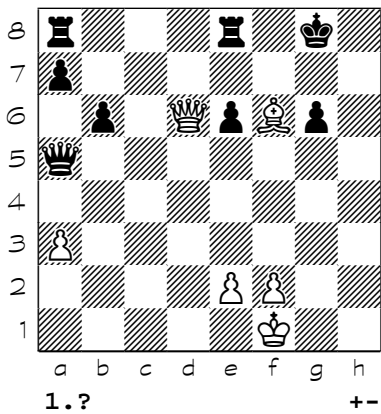
194



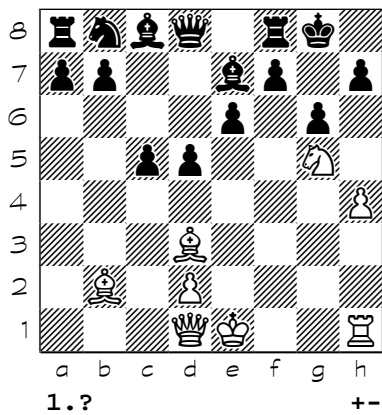
195



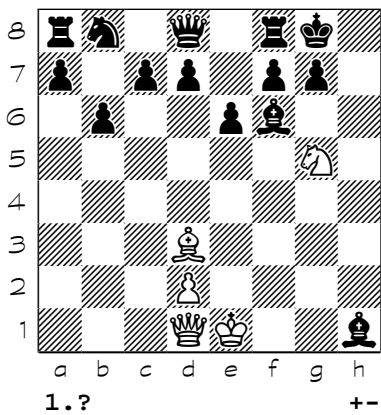
196



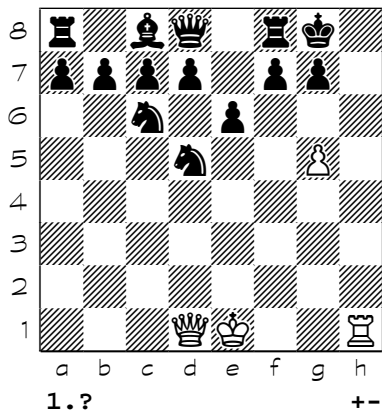
197



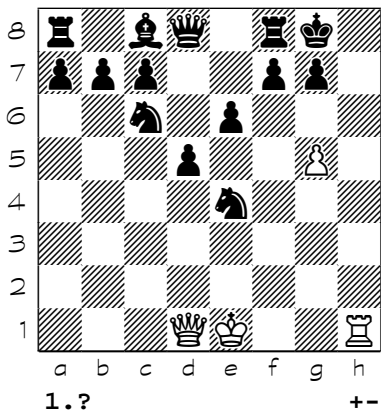
198



199

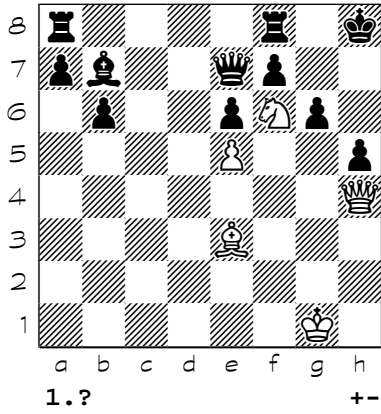


200

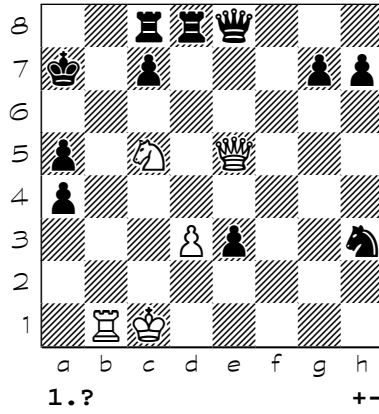


Chess diagrams

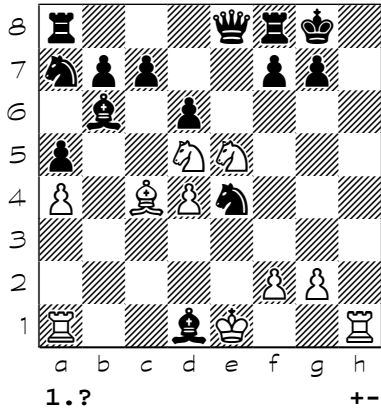
201



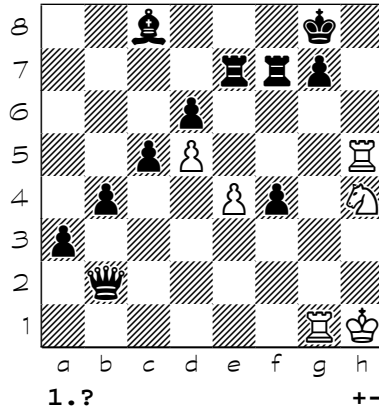
202



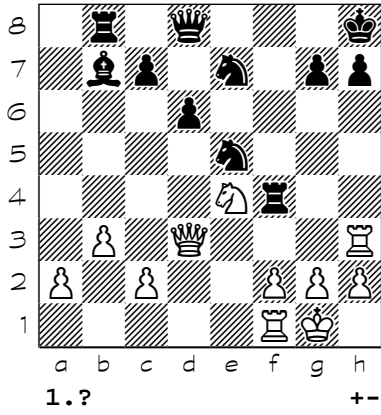
203



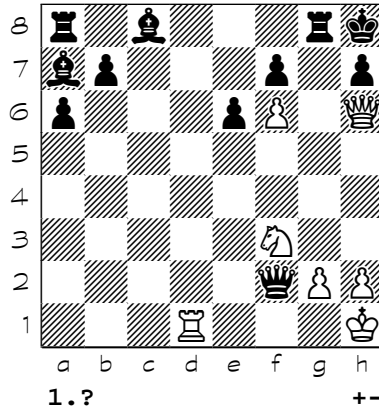
204



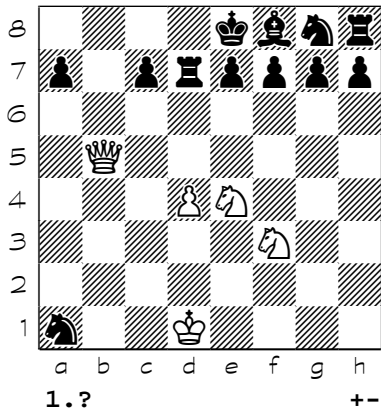
205



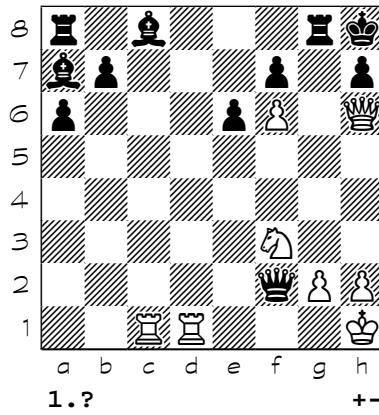
206



207

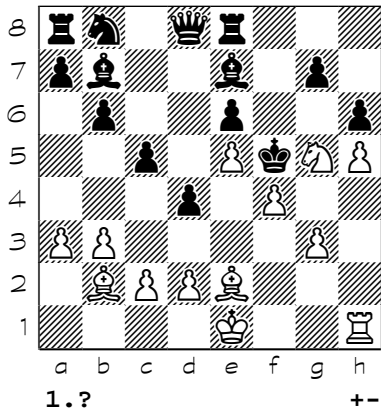


208

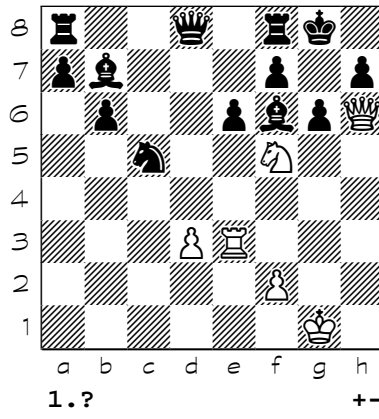


Chess diagrams

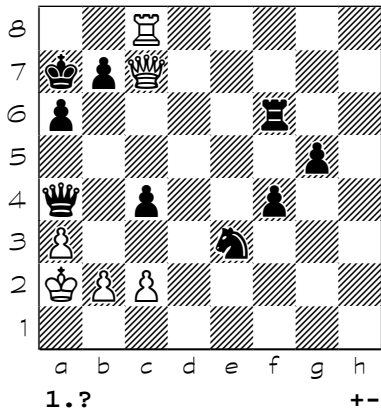
209



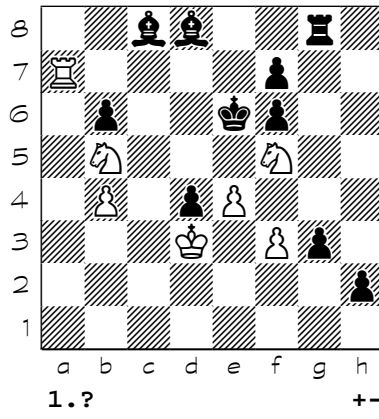
210



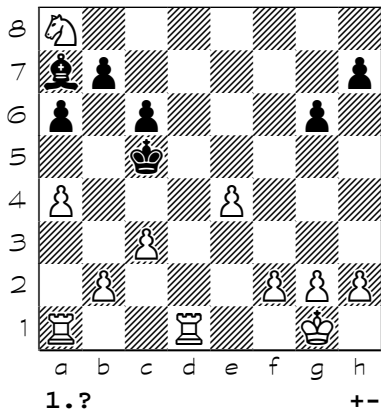
211



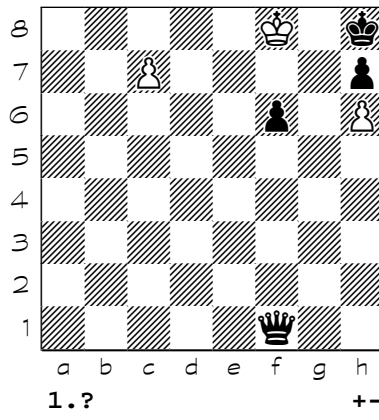
212



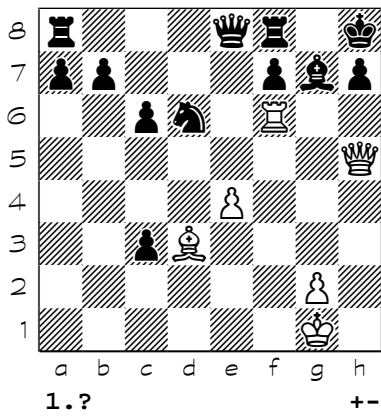
213



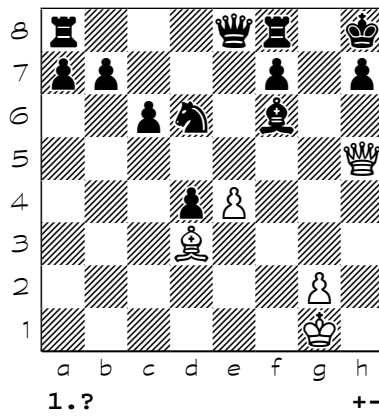
214



215

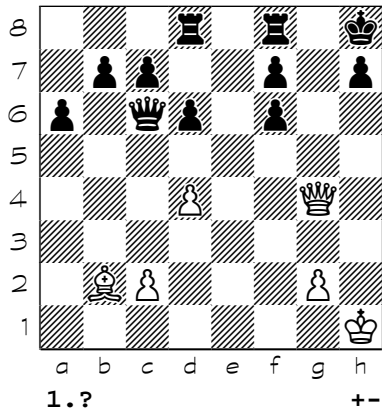


216

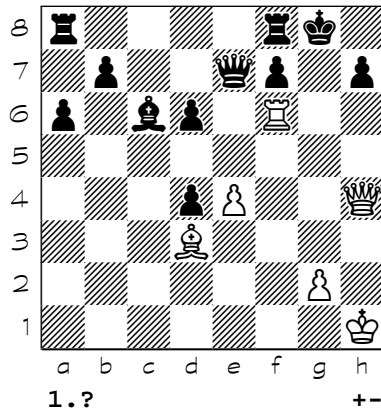


Chess diagrams

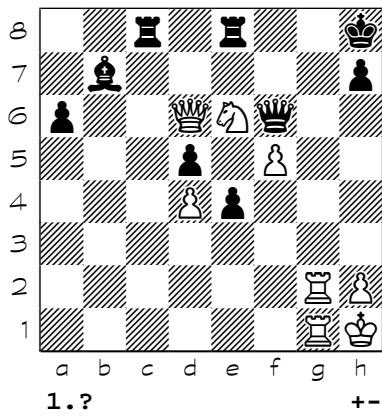
217



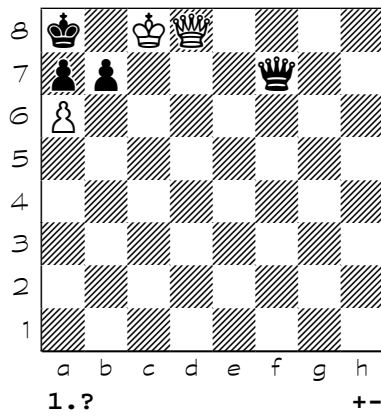
218



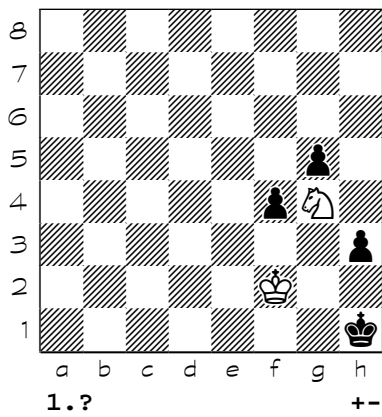
219



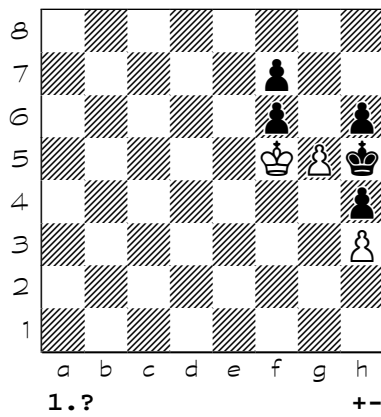
220



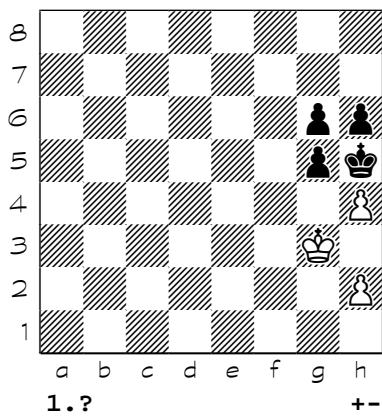
221



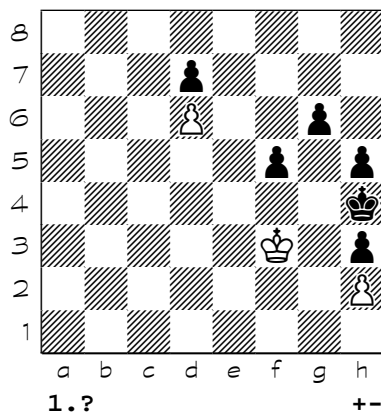
222



223

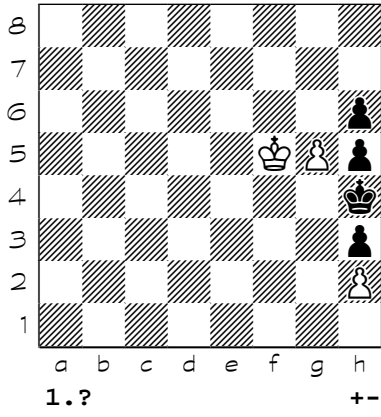


224

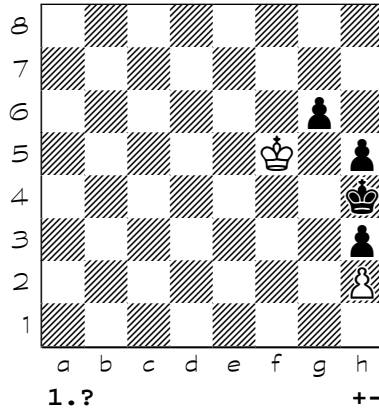


Chess diagrams

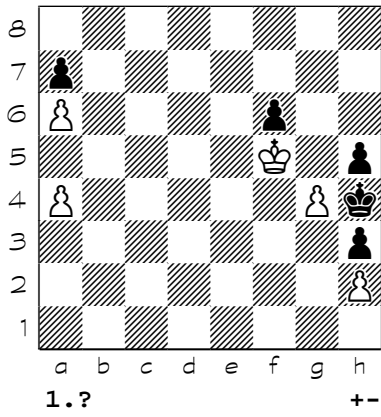
225



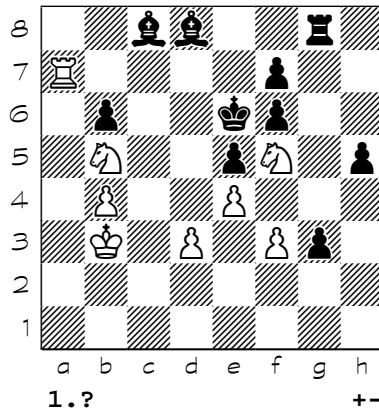
226



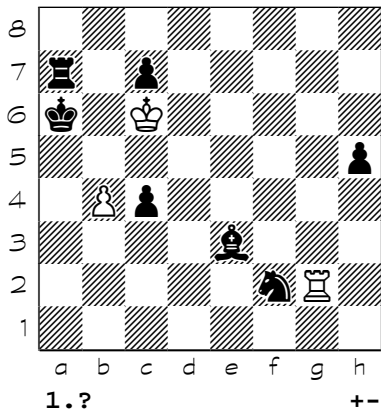
227



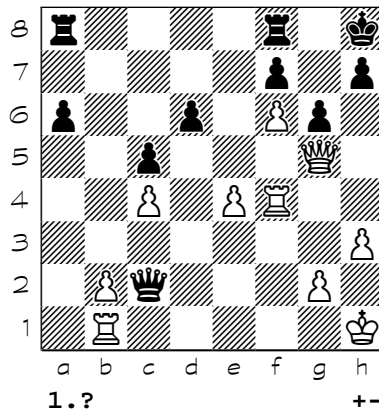
228



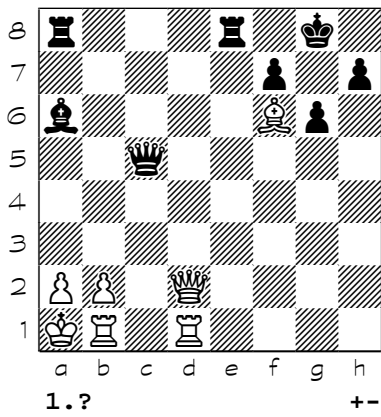
229



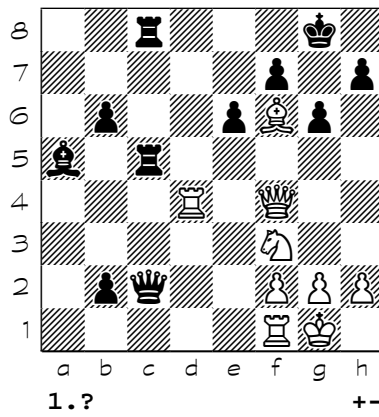
230



231

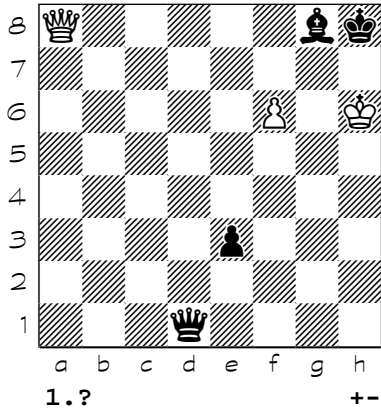


232

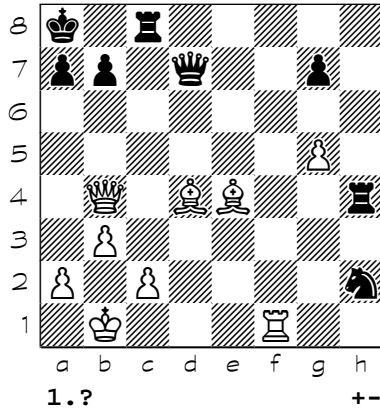


Chess diagrams

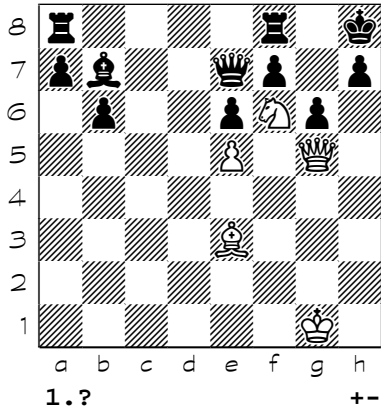
233



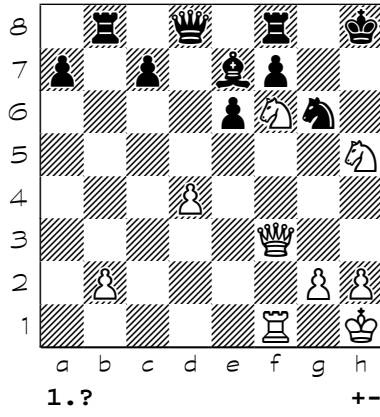
234



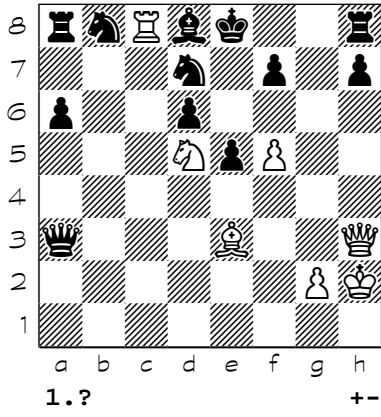
235



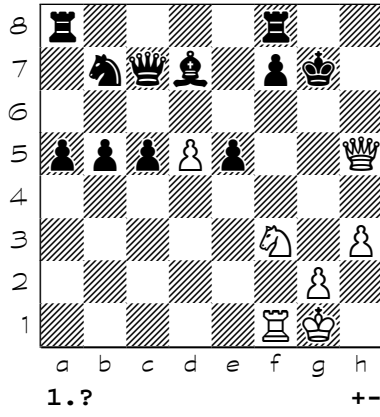
236



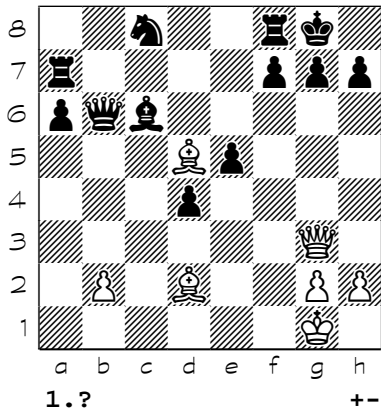
237



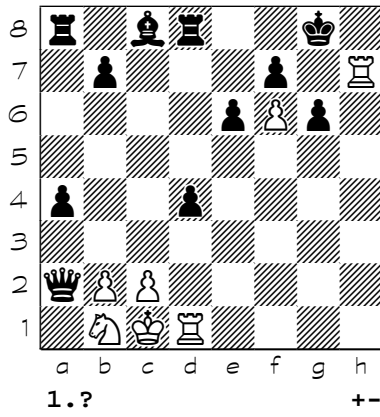
238



239

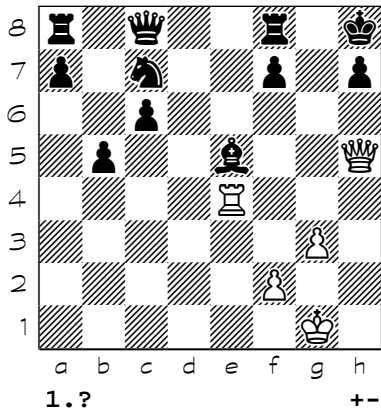


240

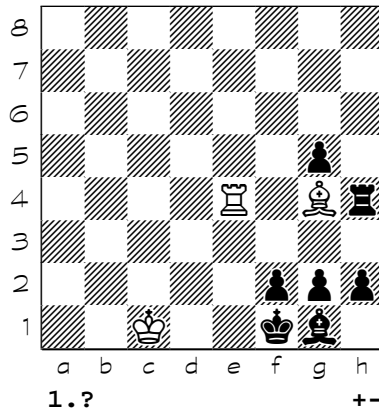


Chess diagrams

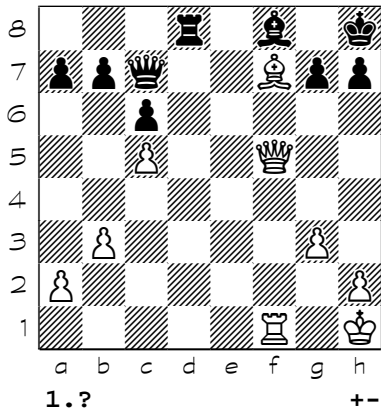
241



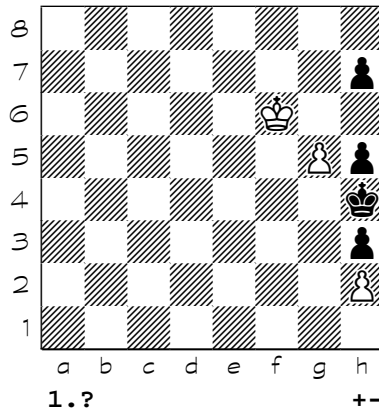
242



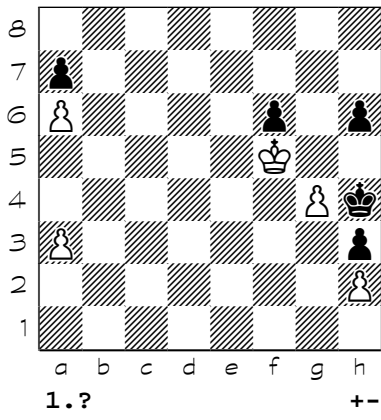
243



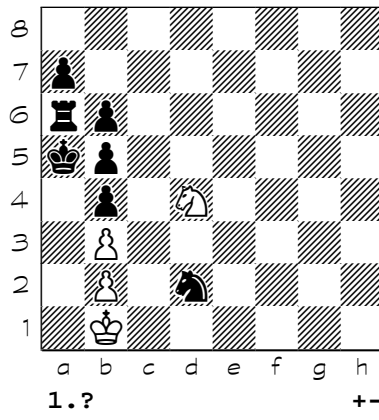
244



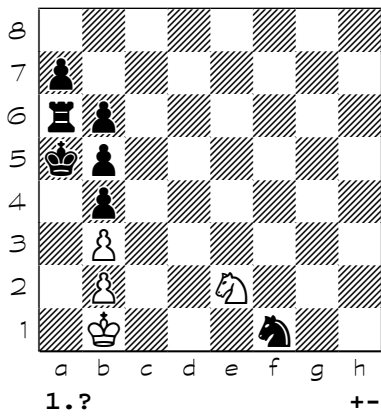
245



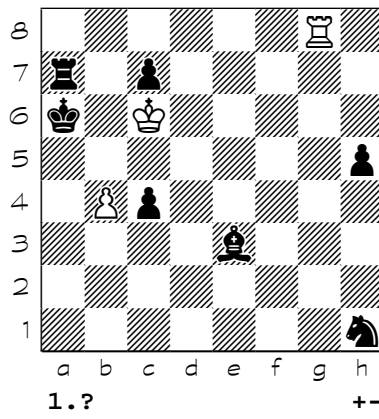
246



247



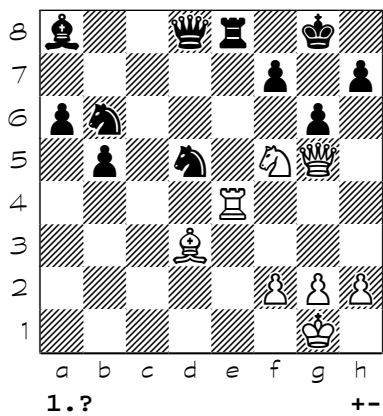
248



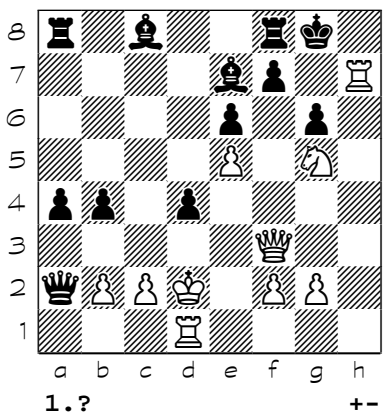


Chess diagrams

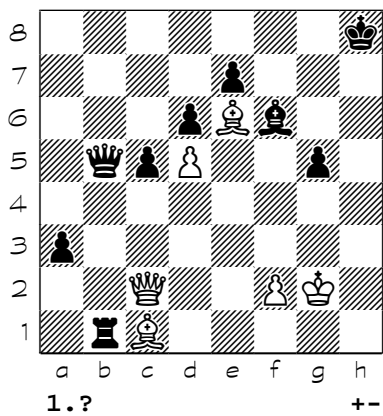
249



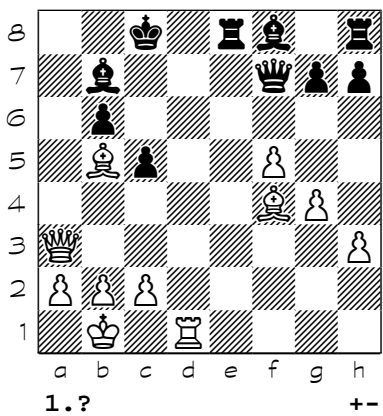
250



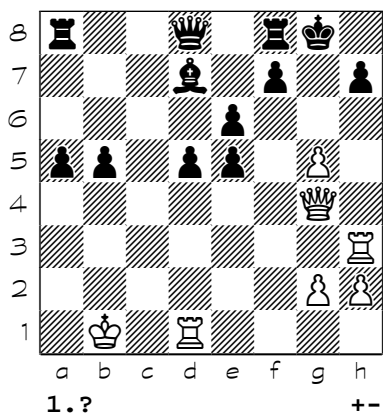
251



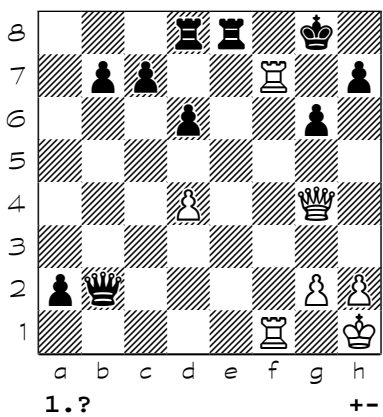
252



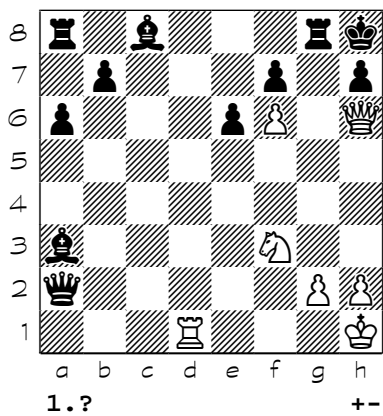
253



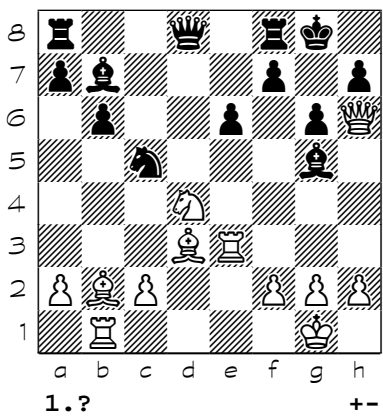
254



255

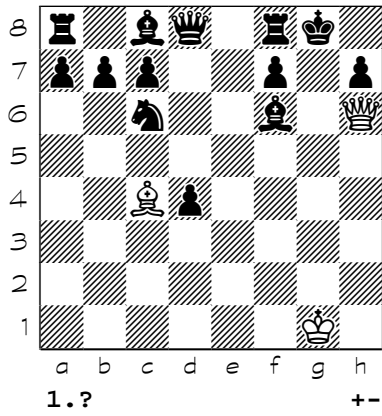


256

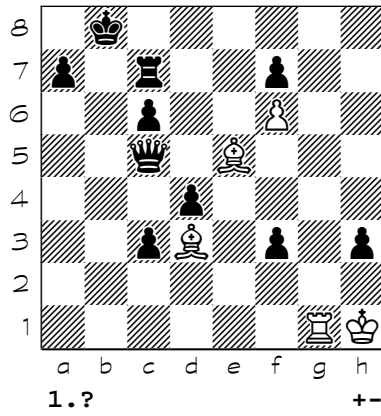


Chess diagrams

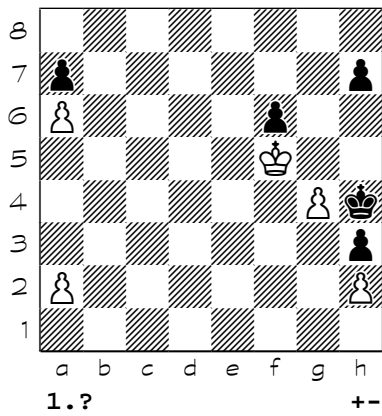
257



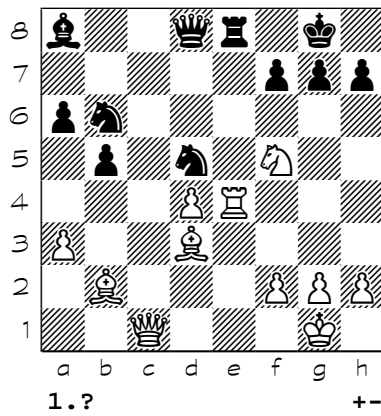
258



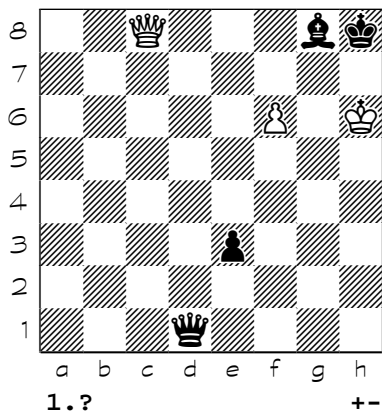
259



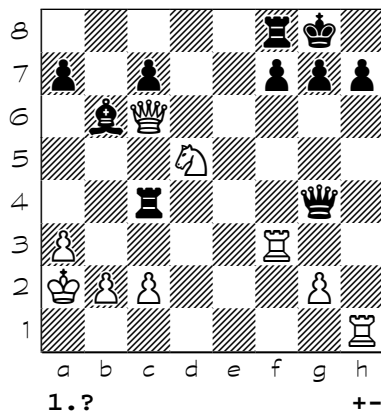
260



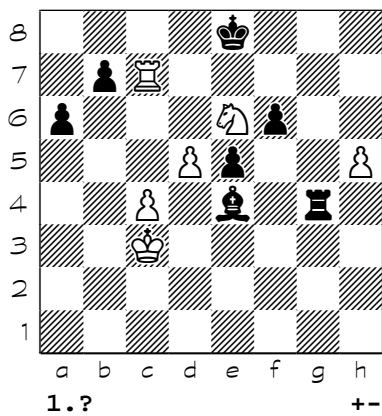
261



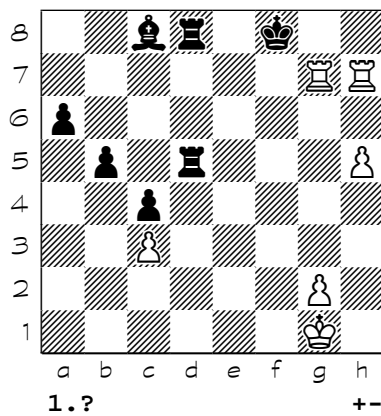
262



263

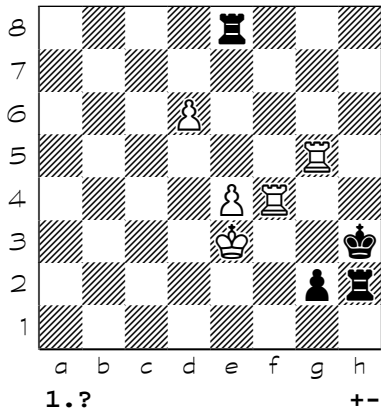


264

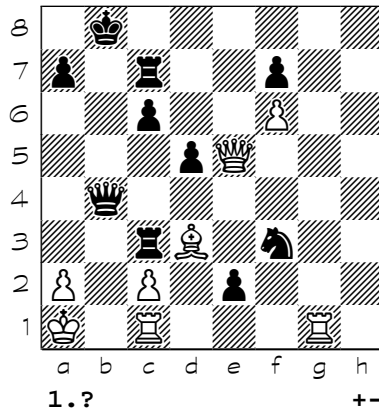


Chess diagrams

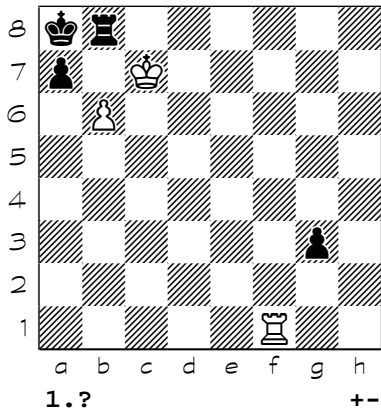
265



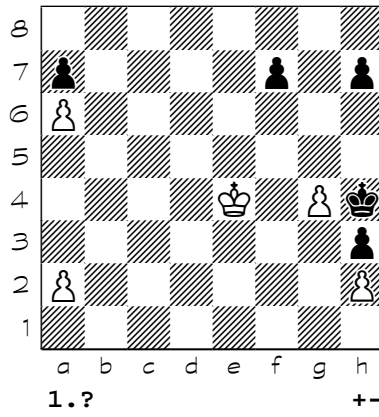
266



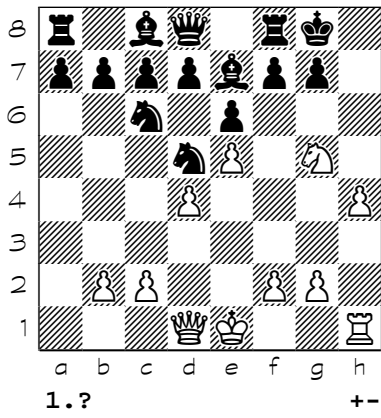
267



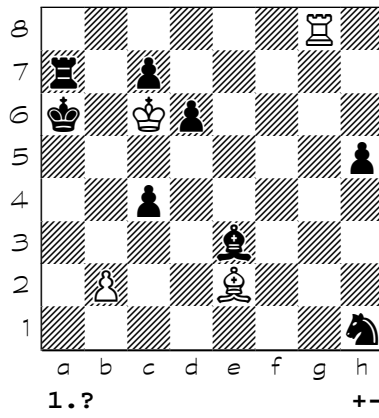
268



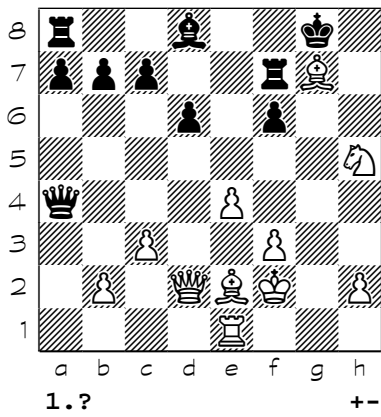
269



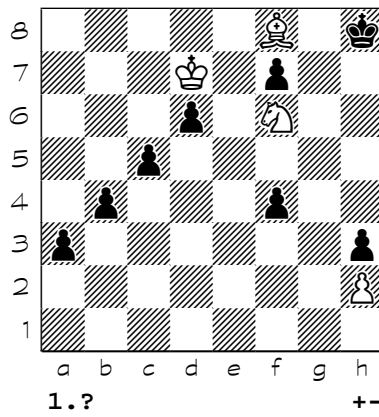
270



271

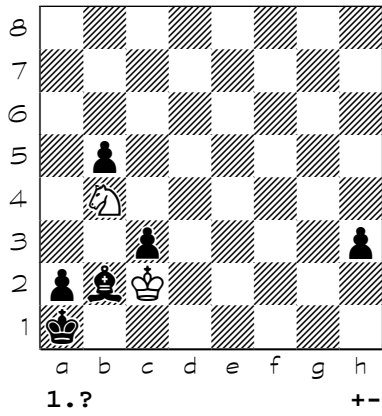


272

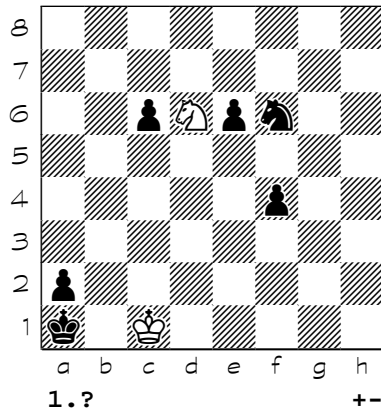


Chess diagrams

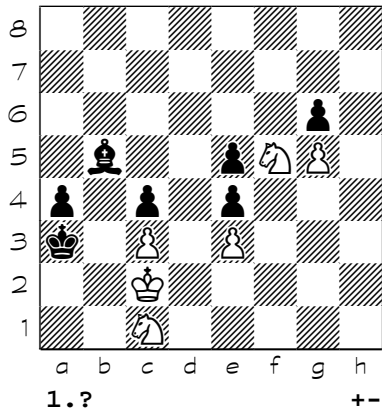
273



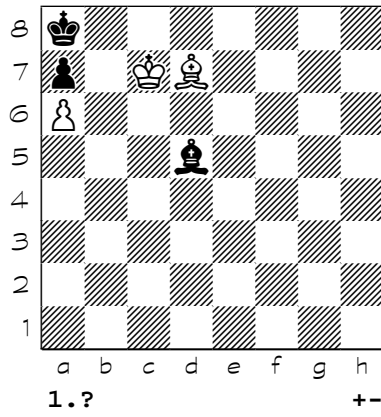
274



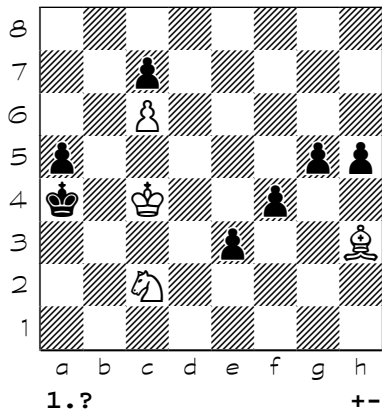
275



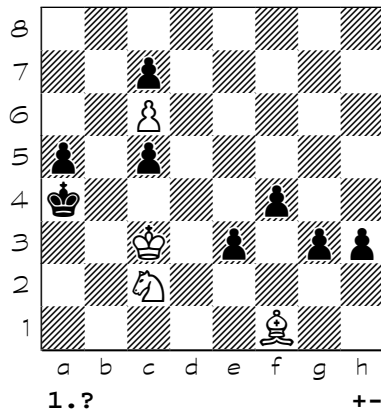
276



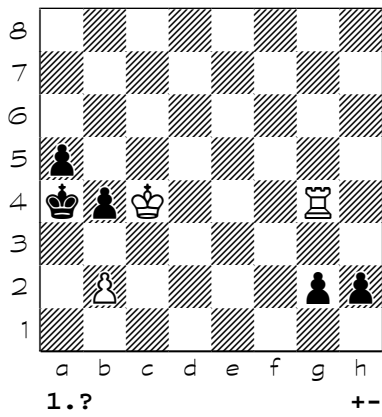
277



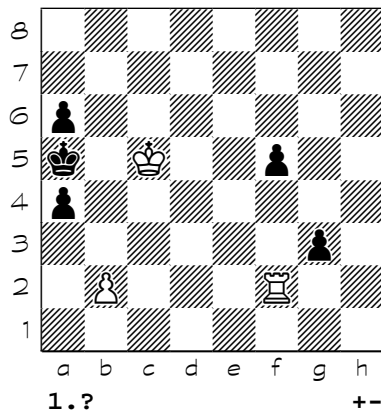
278



279

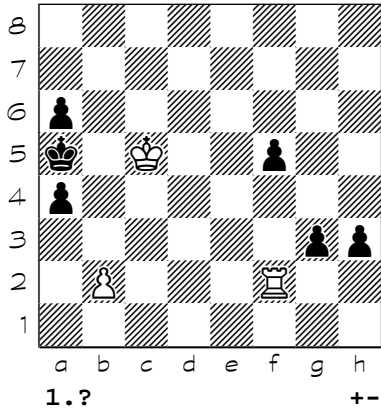


280

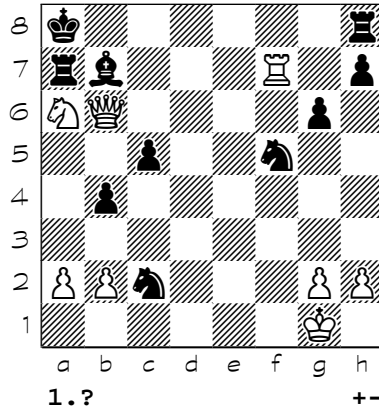


Chess diagrams

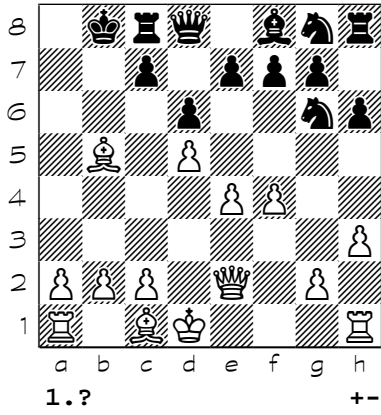
281



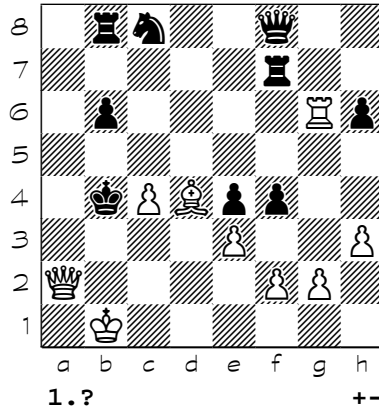
282



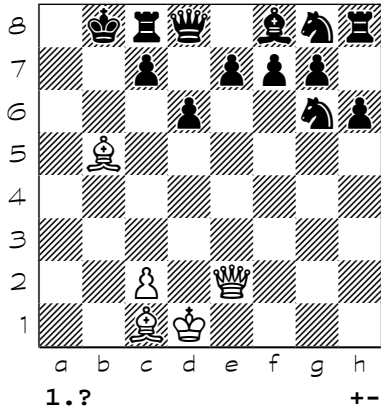
283



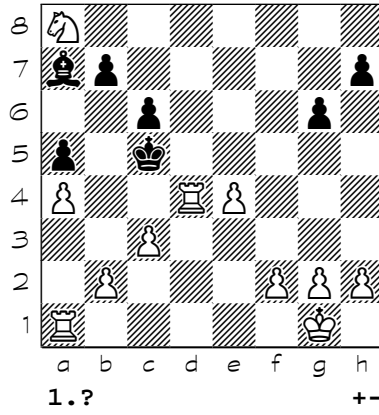
284



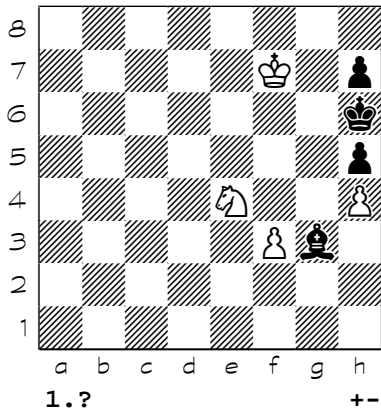
285



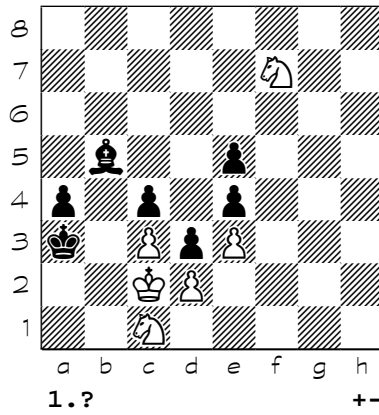
286



287

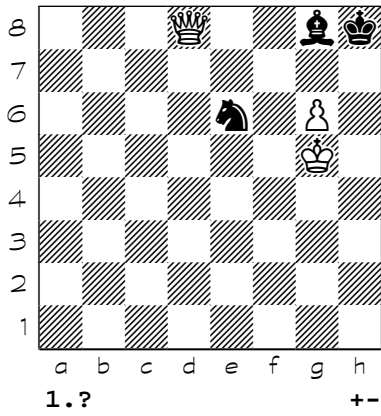


288

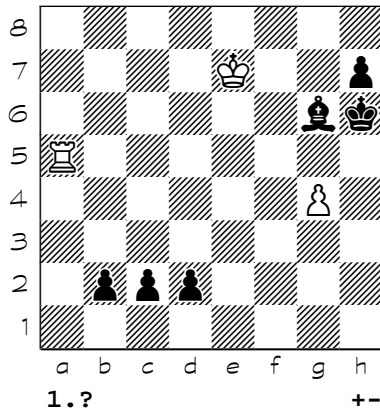


Chess diagrams

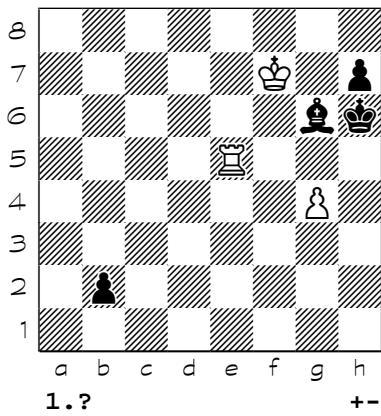
289



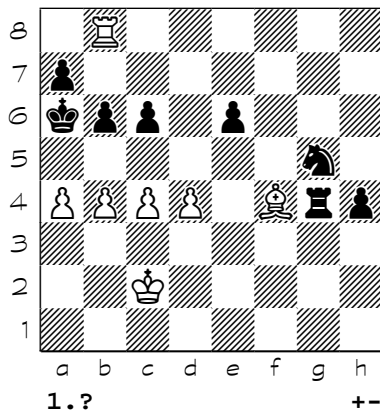
290



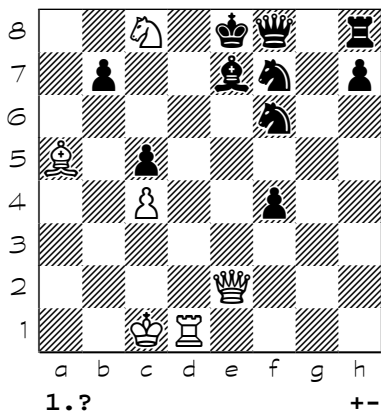
291



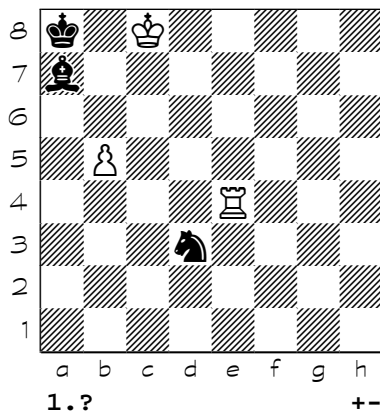
292



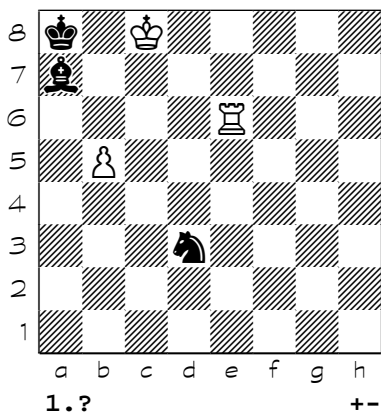
293



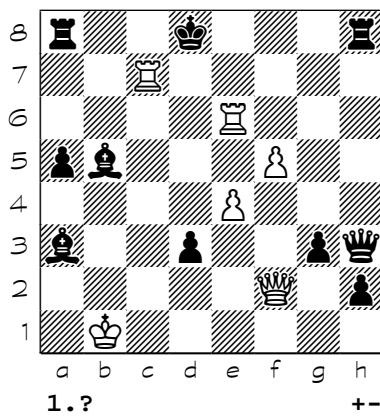
294



295

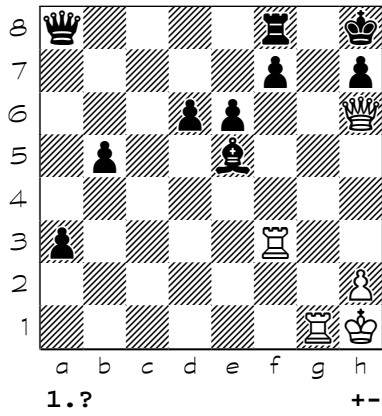


296

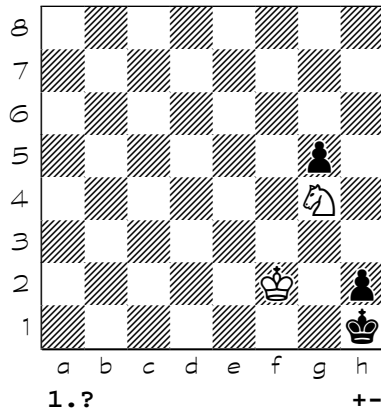


Chess diagrams

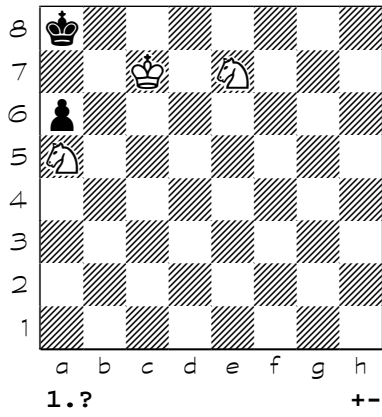
297



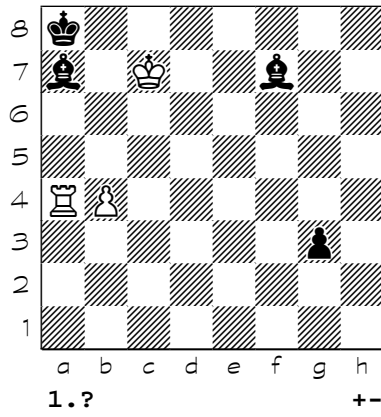
298



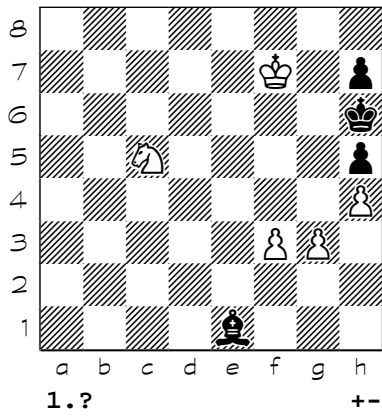
299



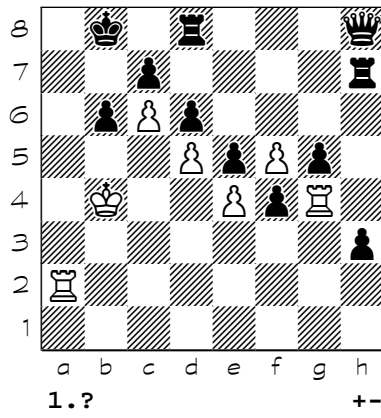
300



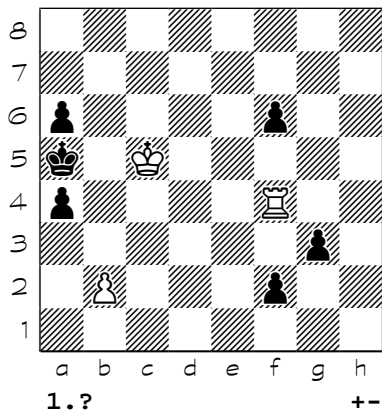
301



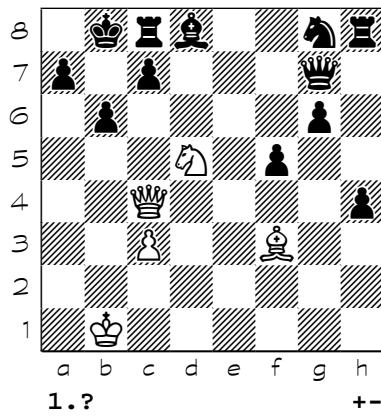
302



303

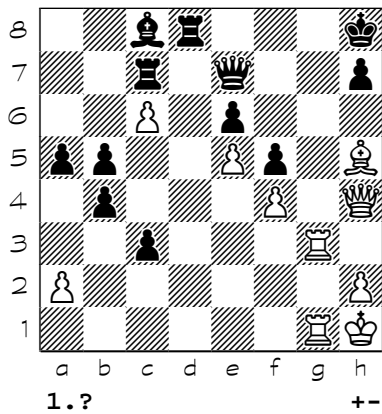


304

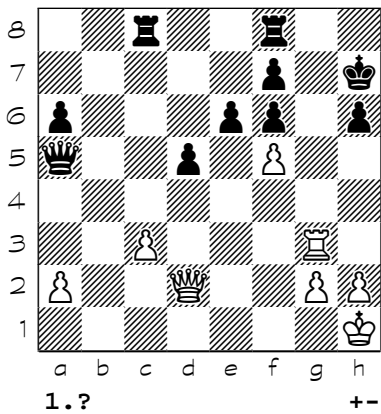


Chess diagrams

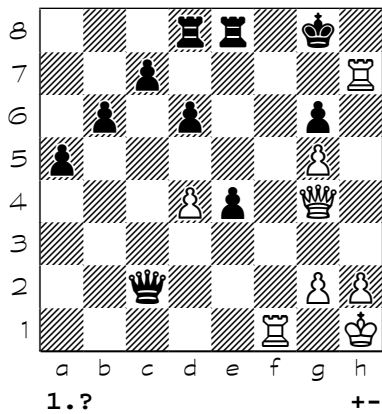
305



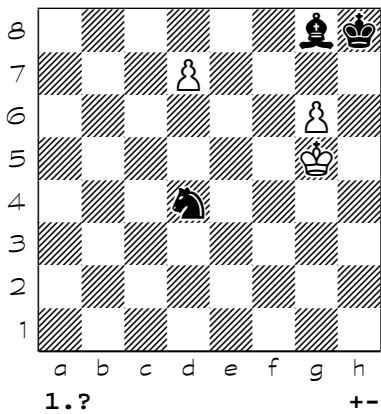
306



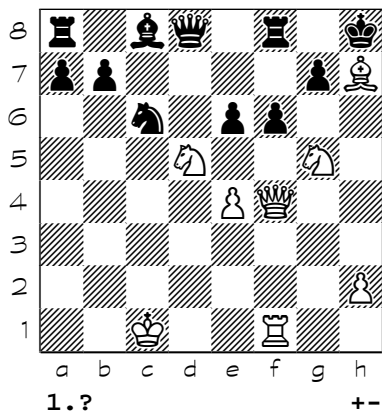
307



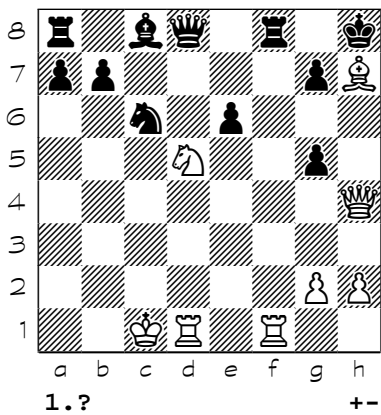
308



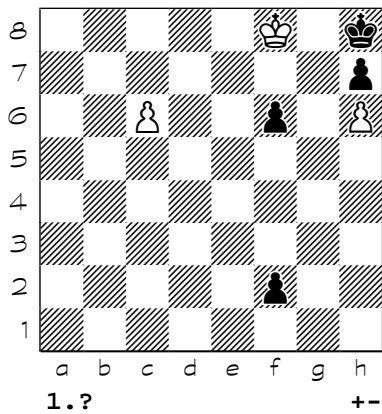
309



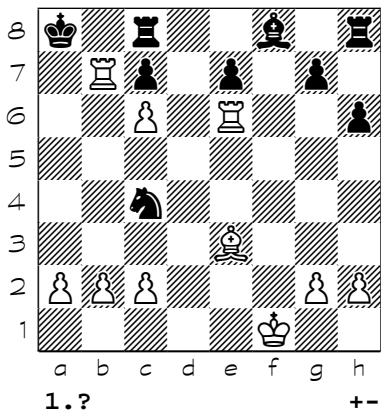
310



311



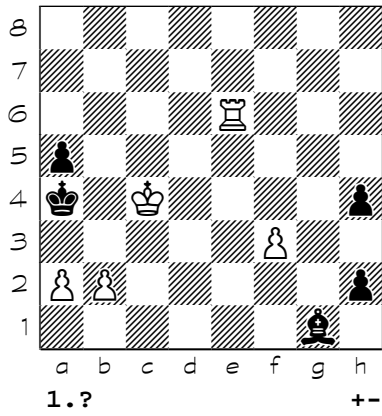
312



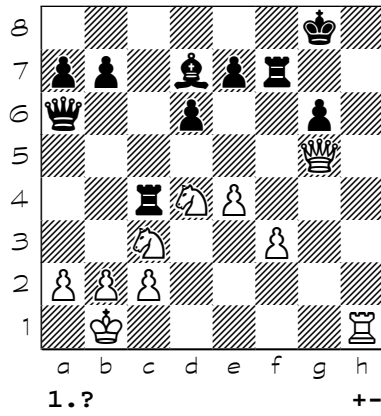


Chess diagrams

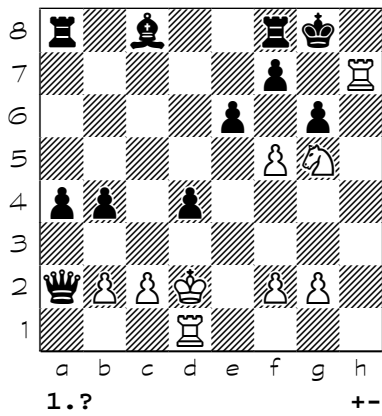
313



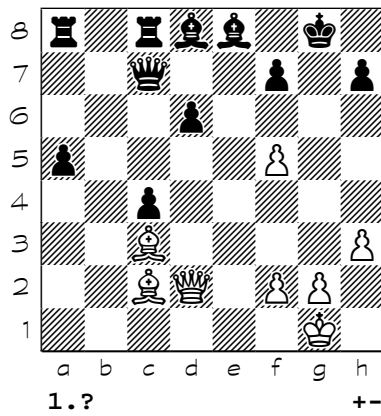
314



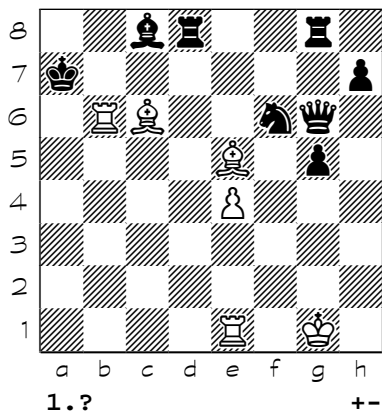
315



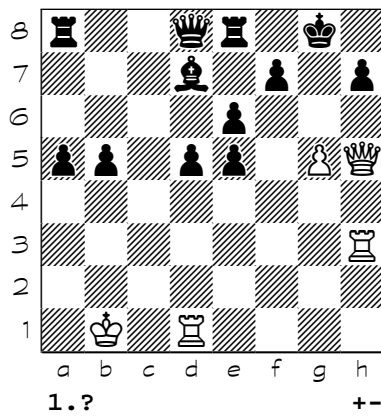
316



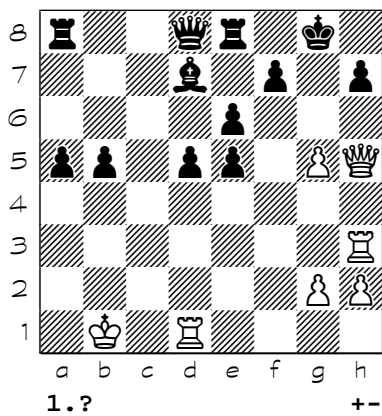
317



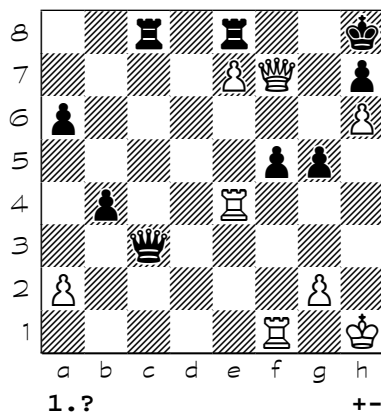
318



319

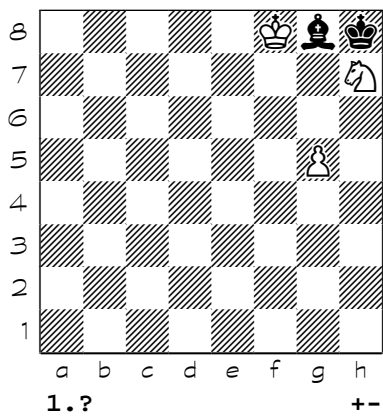


320

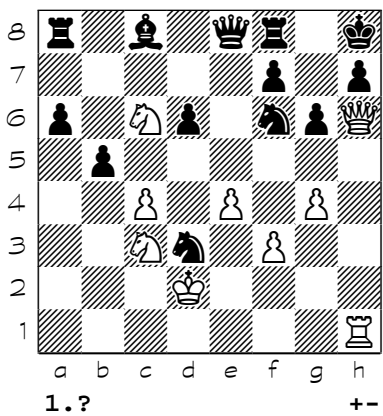


Chess diagrams

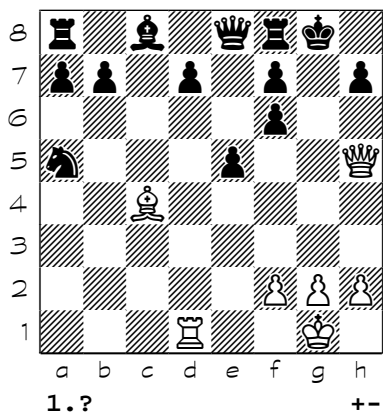
321



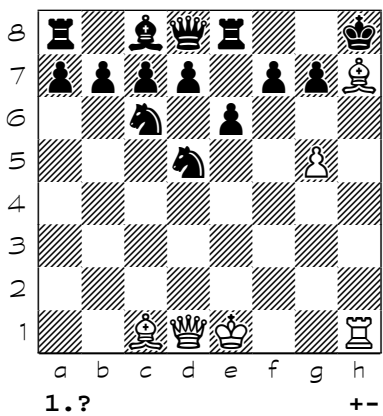
322



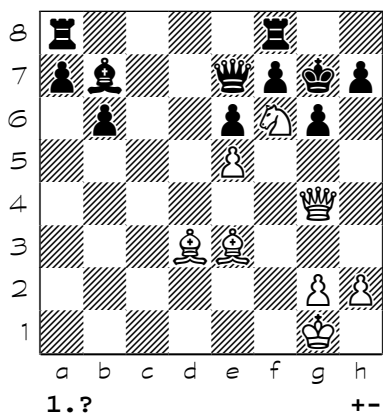
323



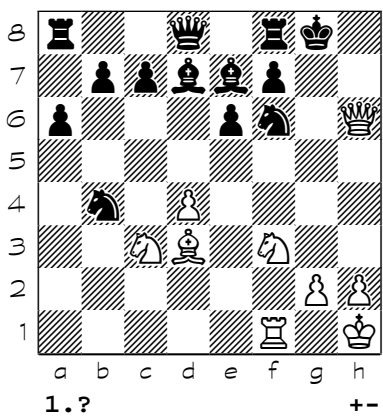
324



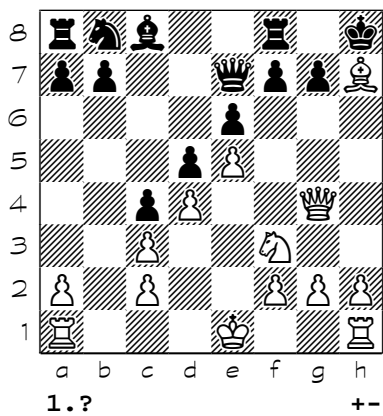
325



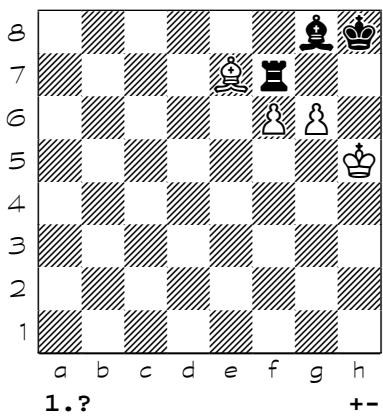
326



327

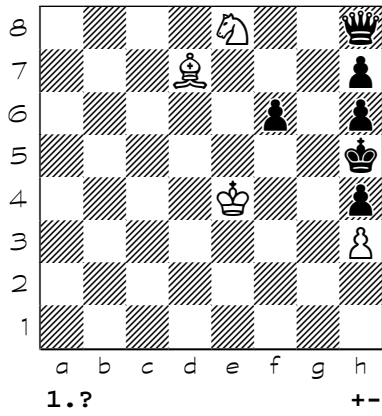


328

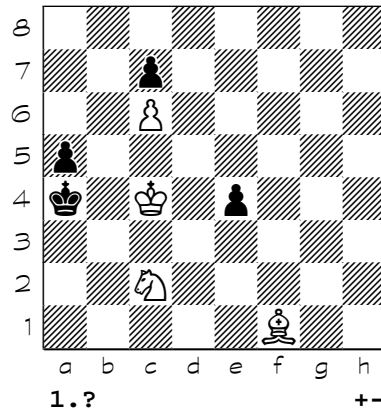


Chess diagrams

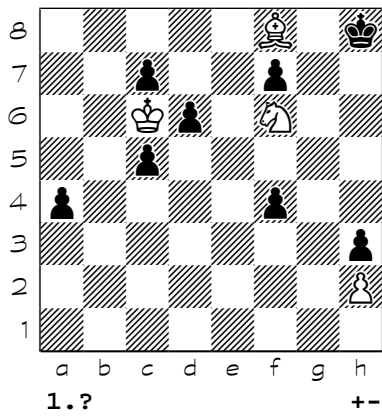
329



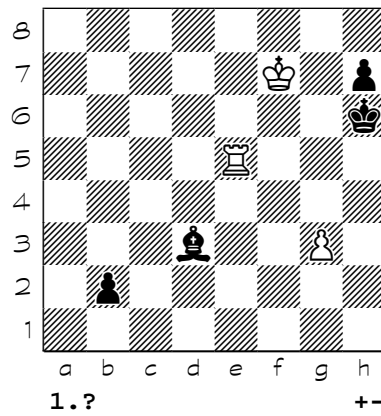
330



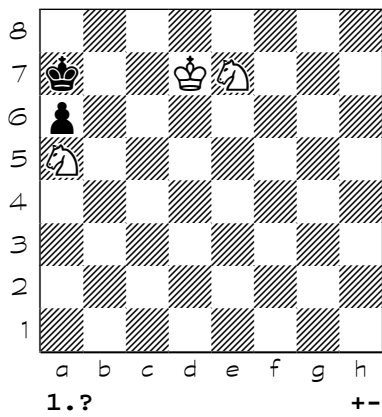
331



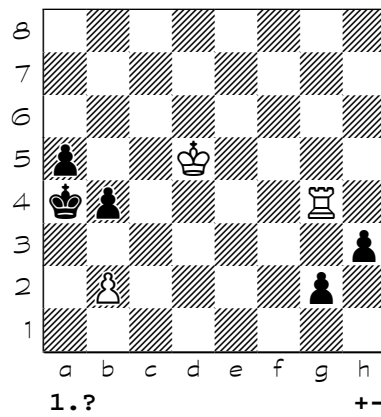
332



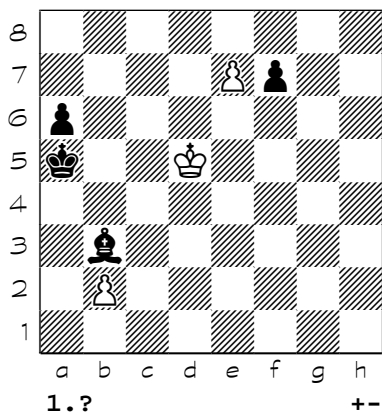
333



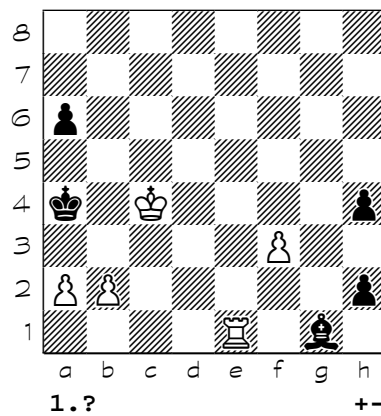
334



335

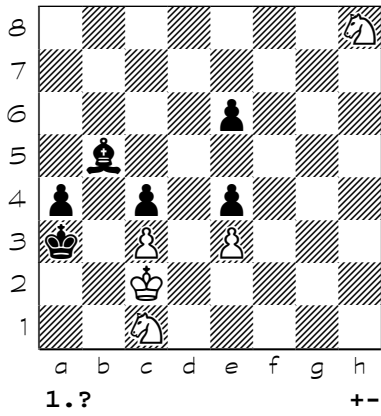


336

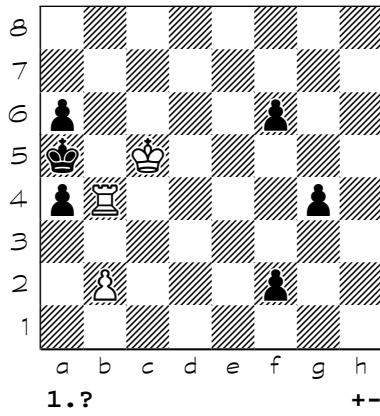


Chess diagrams

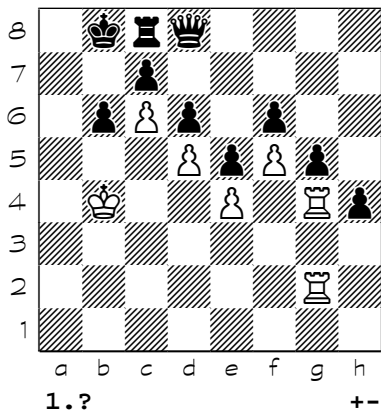
337



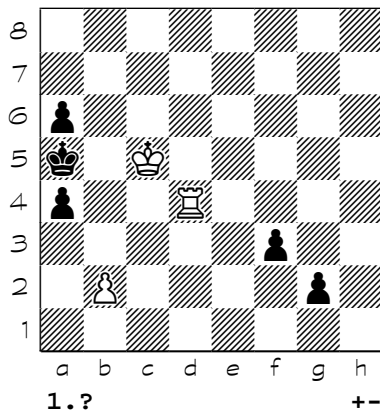
338



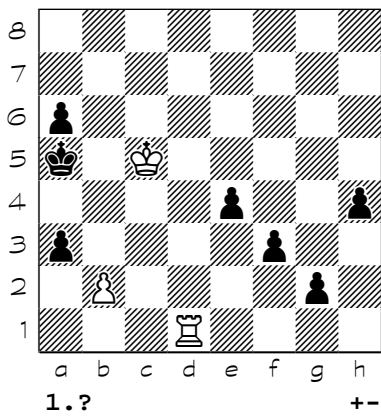
339



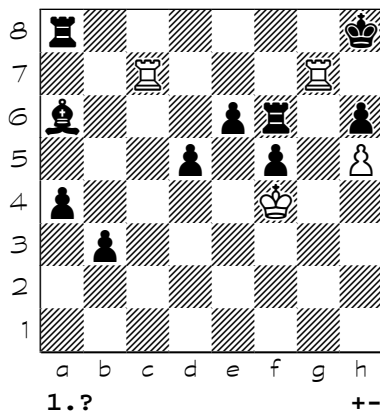
340



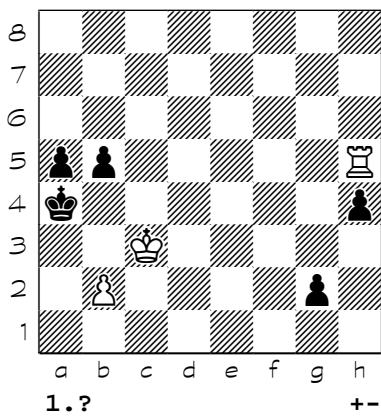
341



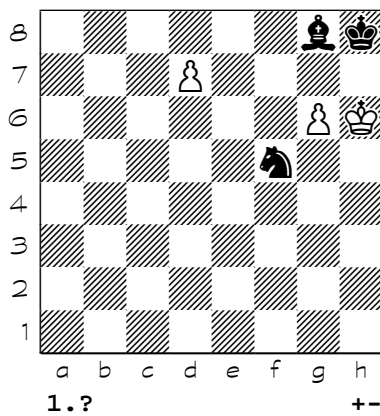
342



343

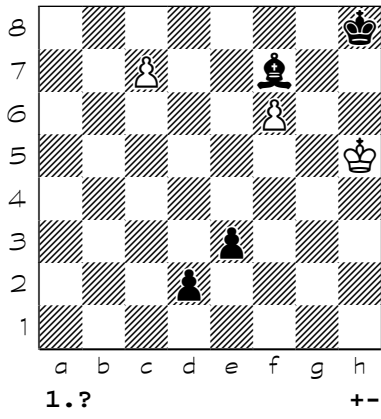


344

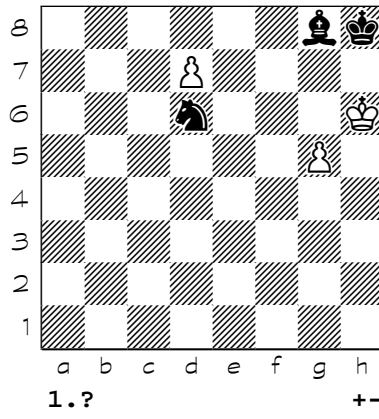


Chess diagrams

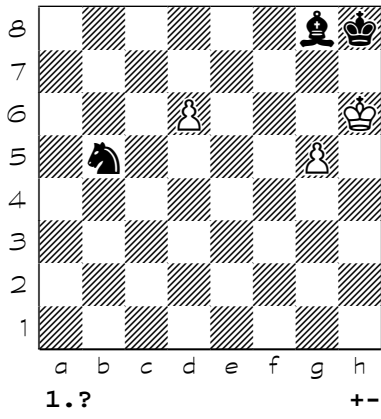
345



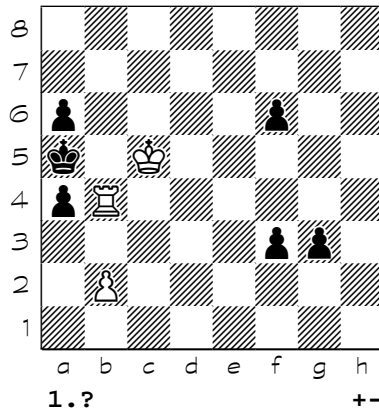
346



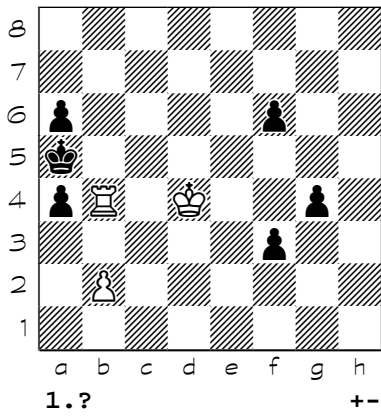
347



348



349



- (1) 1. b6 {threat Ra7# (note the bishop is pinned)} 1... Nxa6 2. b7# { a two-move pawn manoeuvre} 1-0
- (2) 1. b6 {threat Ra7#} 1... Bxa4 2. b7# {a successful 2-move pawn manoeuvre to b7} 1-0
- (3) 1. Nf5 {or Nf1} 1... g3+ 2. Nxb3# {a two-move knight manoeuvre to g3} 1-0
- (4) 1. Nc5 {or Nc1} 1... b3+ 2. Nxb3# {and a two-move knight manoeuvre to b3} 1-0
- (5) 1. Na5 {or Nd4} 1... b4 2. Nb3# 1-0
- (6) 1. Na3 {typical two-move knight manoeuvre} 1... g2 2. Nc2# 1-0
- (7) 1. Nd5 Be4 2. Nf4# 1-0
- (8) 1. Nf6 Bg5 2. Ng8# {with the black king trapped, the knight check is mate} 1-0
- (9) 1. Nd6 Bg5 2. Nf5# 1-0
- (10) 1. Nc8 {or Nd5} 1... a1=Q 2. Nb6# 1-0
- (11) 1. Nb4 g1=Q 2. Nxa6# {typical knight and bishop mate} 1-0
- (12) 1. Ne6 h1=Q 2. Nec7# {exploiting the bishop's pin of the rook} 1-0
- (13) 1. Bf8 Ba2 2. Bg7# {2-move bishop manoeuvre} 1-0
- (14) 1. Ba6 e1=Q 2. Bb5# {a two-move bishop manoeuvre} 1-0
- (15) 1. Bc6 {(or Bb5, or Ba4)} 1... Qf8 {the black queen wants to guard f6 and g7 from knight checks, while manoeuvring to start checking the white king} 2. Bf3# {a two-move bishop manoeuvre} 1-0
- (16) 1. Rh4 Qe7 2. Rh8# {a typical two-move rook manoeuvre} 1-0
- (17) 1. Rh4 Rxe5 2. Rh8# {the pawn supports the rook} 1-0
- (18) 1. Rd7 Bf6 2. Rxa7# {typical rook and knight mate in the corner} 1-0
- (19) 1. Re7 fxe2 2. Rh7# 1-0
- (20) 1. Rga3 Nc7 2. R3a7# {the two rooks support each other} 1-0
- (21) 1. Rb6 Rg5 2. Ra6# {a two-move rook manoeuvre to a6} 1-0
- (22) 1. Rf5 Bxe6 2. Rh5# {two-move rook manoeuvre to h5} 1-0
- (23) 1. Rd4 f1=Q 2. Ra4# 1-0
- (24) 1. Rf3 {or Ra1} 1... axb2 2. Ra3# 1-0
- (25) 1. Ra1 {threat Ra3#} 1... a2 2. Rxa2# {2-move rook manoeuvre} 1-0
- (26) 1. Ra1 f1=Q 2. Rxa3# 1-0
- (27) 1. Rf3 axb2 2. Ra3# {2-move rook manoeuvre} 1-0
- (28) 1. Rg3 b5 2. Ra3# 1-0
- (29) 1. Rcg7 {threat Rg8#} 1... Ne2 2. Rh8# 1-0
- (30) 1. Qh6 Rfd8 2. Qg7# 1-0
- (31) 1. Qa6 e1=Q 2. Qb7# 1-0
- (32) 1. Qh6 Qc5 2. Qg7# {the most common manoeuvre (queen to h6, then Qg7#)} 1-0
- (33) 1. Qh6 {threat Qg7#} 1... gxh6 2. Nxb6# {typical knight and bishop mate} 1-0
- (34) 1. Qh6 {threat Qg7#} 1... Ne6 2. Bxh7# { the queen supports the bishop, and takes away the escape square on f8} 1-0
- (35) 1. Qg6 {exploiting the pin of the f7 pawn by bishop c4} 1... Nxc4 2. Qxg7# 1-0
- (36) 1. Qg6 a2 2. Qxg7# 1-0
- (37) 1. Qg4 {threats Qg6#, Qg7#} 1... g5 {blocking both threats} 2. hxg6# { a nice en passant mate} 1-0
- (38) 1. Qf5 Qxe5 2. Qh7# {the bishop supports the queen} 1-0
- (39) 1. Qf5 Qxe5 2. Qh7# { the next most common type of two-move manoeuvre aims at Qh7#} 1-0
- (40) 1. Qh6 a1=Q 2. Qxh7# 1-0
- (41) 1. Qh6 Qxc3 2. Qh8# {or Qh7#} 1-0
- (42) 1. Qh6 {threat Qh7#} 1... Rb8 2. Qh8# 1-0
- (43) 1. Qh5 {threats Qh7#, Qh8#} 1... gxh5 2. Bh7# { a typical diagonal opening sacrifice cleared the way for the bishop} 1-0
- (44) 1. Qd6 Ng6 2. Qd5# {a two-move queen manoeuvre to d5} 1-0
- (45) 1. Qd6 {threat Qd5#} 1... Bb7 2. Rf4# { the queen took away the escape square on d3} 1-0
- (46) 1. b6 {to support the rook (threat Ra7#)} 1... Nxa4 2. b7# { the black knight was diverted from guarding g7} 1-0
- (47) 1. d6 Bc6 2. Re7# {the pawn supports the rook} 1-0

- (48) 1. h6 {the pawn supports the rook (over-protection of g7)} 1... e2 2. Rh8# { the pawn freed this rook from having to guard the other rook on g7} 1-0
- (49) 1. g3 {Rg3 also works} 1... Rxe6 2. Rh4# {the pawn supports the rook} 1-0
- (50) 1. Kc4 {leaving the exposed c3 square, and guarding b5} 1... e1=Q 2. Bb5# { the king supports the bishop} 1-0
- (51) 1. Kf3 a1=Q 2. Re2# {the king supports the rook} 1-0
- (52) 1. Nf7 Qxd5 2. Rh8# {the knight supports the rook} 1-0
- (53) 1. Nf5 {threat Qg7#} 1... Kf8 2. Qh8# { the knight also guards the escape square e7} 1-0
- (54) 1. Nf5 {threat Qg7#} 1... Rg8 2. Qxh6# { black's rook blocked the escape square on g8} 1-0
- (55) 1. Ng5 {threat 2.Qh7# (1.Qh6 also works)} 1... h6 2. Qxg6# {exploiting the pin} 1-0
- (56) 1. Bc5 e1=Q 2. a7# {the bishop supports the pawn} 1-0
- (57) 1. Bh6 1... Qxd5 {the queen was pinned by the bishop} 2. Rxf8# { the bishop supports the rook} 1-0
- (58) 1. Bc6 Qxf4 2. Ra8# {the bishop supports the rook} 1-0
- (59) 1. Bf8 b1=Q 2. Qg7# {bishop supports queen} 1-0
- (60) 1. Bd4 {to support the queen (threat Qg7#)} 1... Bf7+ 2. Qxf7# { the bishop on d4 also took away the flight square on h8} 1-0
- (61) 1. Bg6 Bxf1 2. Qh7# { the bishop supports the queen (and guards the escape square on f7)} 1-0
- (62) 1. Rga1 h1=Q 2. Ra8# {one rook supports the other} 1-0
- (63) 1. Rcc3 Qa5 2. Rh3# {even while pinned, the rook on c3 supports the rook on h3} 1-0
- (64) 1. Rga7 Qxb4 2. R1a6# {rook supports rook} 1-0
- (65) 1. f7 {taking away the escape square on g8} 1... Bg8 2. Bf6# { f8=Q?? would be stalemate!} 1-0
- (66) 1. h6 {taking away the escape square on g7 (encirclement by the h6 pawn)} 1... Nd4 2. Qg5# 1-0
- (67) 1. h6 {or Bh6 (taking away the escape square on g7)} 1... e4 2. Qg5# 1-0
- (68) 1. g4 {threat Bf5#} 1... Be4 2. Nh4# {the second threat} 1-0
- (69) 1. g6 {taking away the escape square on f7} 1... Rfe8 2. Qh8# { the rook supports the queen} 1-0
- (70) 1. g6 {threat Qh7#} 1... Rfe8 2. Qh8# {Now 2.Qh7+ would even lose!} 1-0
- (71) 1. g4 {taking away the escape square on h5} 1... Be4 2. Nh4# { the black king is completely encircled, so the knight check is mate} 1-0
- (72) 1. Ke6 {the black king now has no escape squares} 1... g1=Q 2. f7# { and the white king supports the pawn to f7} 1-0
- (73) 1. Kf2 {the white king guards the black king's escape squares} 1... Bd3 2. Ng3# {and the knight checks and mates} 1-0
- (74) 1. Kc3 {encircling the black king (threat d4#)} 1... Bxd3 2. Rc7# { the other threat is executed instead} 1-0
- (75) 1. Kc2 {encirclement by the white king (cutting off the escape square on d3)} 1... h1=Q 2. Rf4# 1-0
- (76) 1. Nf6 {(or Ng5) guarding the escape square h7} 1... Bb1 2. g7# { encirclement by the knight, mate by the pawn} 1-0
- (77) 1. Bb3 {encirclement by the bishop} 1... a4 2. Nc2# 1-0
- (78) 1. Bh6 {taking away the escape square on g7} 1... Rh8 2. Qg5# { even while pinned, the bishop supports the queen} 1-0
- (79) 1. Bf6 {encirclement by the bishop} 1... Nd7 { the g6 pawn is pinned by the white rook} 2. Nh6# {and the knight delivers mate} 1-0
- (80) 1. Bf7 {encirclement by the bishop (taking away the escape square on e6)} 1... Bxc5 2. Ne3# 1-0
- (81) 1. Rg3 {threat Qh8#} 1... Kh7 2. Rh3# 1-0
- (82) 1. Qd6 {threat Qd5#, and cutting off the escape square on d3} 1... Rd8 { preventing Qd5#} 2. Rf4# {but since the black king is completely encircled, the rook can deliver mate instead} 1-0
- (83) 1. Ra1 {pinning the defender (b4+ also works)} 1... f1=Q 2. b4# { the black pawn on a4 is pinned} 1-0
- (84) 1. Ra3 {pinning the defender} 1... f1=Q 2. b4# {the a4 pawn is pinned} 1-0

- (85) 1. Rd8 {pinning the defender} 1... Bd7 2. Qxg7# 1-0
- (86) 1. Rf3 {pinning the defender} 1... Qxf3 2. Qxe7# 1-0
- (87) 1. Kc8 {clearing the square} 1... Bd5 2. Nc7# 1-0
- (88) 1. f7 {clearing the square} 1... Bxf7 2. Bf6# 1-0
- (89) 1. Kf1 {clearing the square} 1... f2 2. Nxf2# 1-0
- (90) 1. Kg1 {clearing the square} 1... a1=Q 2. Ng2# 1-0
- (91) 1. Rc4 {threat Rb4#} 1... dxc4 2. Nc5# {the knight occupies the now vacant c5 square} 1-0
- (92) 1. Nf6 {clearing the diagonal} 1... Qxf6 2. Qa8# {or Qb7#} 1-0
- (93) 1. Kg2 {clearing the rank} 1... Nd4 2. Rh1# 1-0
- (94) 1. Kh1 {clearing the file (with a threat of Nh7#)} 1... Red8 2. Rg8# {exploiting the pin of the knight on e7 instead (Nh7+ allows Ke8)} 1-0
- (95) 1. Kh1 {clearing the file (threat Bg7#)} 1... gxf6 {eliminating the threat from the bishop} 2. Rxf6# {but now the knight supports the rook to g8 along the opened file} 1-0
- (96) 1. Kh1 {threat Rg8#} 1... Qxe1 {pinning the rook} 2. Nh7# {the knight mates instead} 1-0
- (97) 1. Rg3 {leaving g6, so as to threaten Bg6# and Bd1#} 1... g5 {guarding against both threats} 2. Rh3# {but the pawn move blocked the escape square on g5} 1-0
- (98) 1. Kb1 {a waiting move (maintaining the guard on b2)} 1... Bb5 {black was in zugzwang} 2. Nxb5# 1-0
- (99) 1. h6 {blocking h6} 1... gxf6 {black was in zugzwang} 2. Be5# {exploiting the opened diagonal} 1-0
- (100) 1. Ra6 {blocking the a6 square (black is in zugzwang)} 1... bxa6 2. b7# {Morphy's (only) problem, composed when he was still a child!} 1-0
- (101) 1. Rc4 {restricting the black king} 1... Ke8 {zugzwang} 2. Rc8# 1-0
- (102) 1. Qg3 {restricting the black king} 1... Kh6 {zugzwang} 2. Qg6# 1-0
- (103) 1. Ng4 1... Nf6+ {zugzwang} 2. Nxf6# 1-0
- (104) 1. Kf1 {clearing the square, and forcing black to move his h-pawn} 1... h2 {black was in zugzwang} 2. Nf2# {black was forced to block his own escape square on h2} 1-0
- (105) 1. Qf6 {(or Qd4) black is put in zugzwang with a pin} 1... Ra8 2. Qxg7# 1-0
- (106) 1. Bf6 {zugzwang via pin} 1... Ra8 2. Bxg7# 1-0
- (107) 1. Bf6 {zugzwang via pin} 1... Rd8 2. Bxg7# 1-0
- (108) 1. Qa1 {zugzwang via pin} 1... Rd8 2. Qxg7# 1-0
- (109) 1. Bf6 {zugzwang via pin} 1... Rf8 2. Bxg7# 1-0
- (110) 1. Bb2 {zugzwang via pin} 1... Re8 2. Bxg7# 1-0
- (111) 1. Bf6 {zugzwang via pin} 1... Ra8 2. Bxg7# 1-0
- (112) 1. Kf4 {mutual zugzwang (whoever has to move loses!)} 1... g3 2. hxg3# 1-0
- (113) 1. Kf5 g4 2. hxg4# 1-0
- (114) 1. h3 g4 2. hxg4# 1-0
- (115) 1. Kc5 b4 2. axb4# 1-0
- (116) 1. f4 {mutual zugzwang} 1... Bxg5+ 2. fxg5# 1-0
- (117) 1. Kc5 b4 2. axb4# 1-0
- (118) 1. Kc6 {encircling the black king (mutual zugzwang)} 1... b5 2. axb5# {king supports pawn} 1-0
- (119) 1. Ne4 {the black queen is pinned} 1... Qxg3 2. Nf6# {and the 2-move knight manoeuvre is completed} 1-0
- (120) 1. Rc4 1... Qh5 {delaying the mate as long as possible} 2. Rc1+ Qd1+ 3. Rxd1# {the rook manoeuvre is completed} 1-0
- (121) 1. Rf5 {threat Rh5#} 1... Qe8 {guarding h5} 2. Qg5# {but the black queen has unguarded g5} 1-0
- (122) 1. Rg5 {threat Ra5#} 1... Bb6 {defending a5} 2. Ra5+ {Anyway!} 2... Bxa5 {self-blocking on a5} 3. b5# {white has only one pawn left, and it mates} 1-0
- (123) 1. Rg5 Bb6 2. Ra5+ Bxa5 3. b5# 1-0
- (124) 1. Rb5 {threat Ra5#} 1... Bb6 2. Ra5+ {Anyway!} 2... Bxa5 {self-blocking on a5} 3. b5# 1-0
- (125) 1. Rd2 {the a1 square is guarded by the bishop} 1... Bb6 2. Ra2+ Ba5 3. Rxa5# {pawn supports rook (b5# also works)} 1-0



- (126) 1. Qh6 {threat Qg7#} 1... Rg8 {guarding g7} 2. Qxf6+ {the other threat} 2... Rg7 3. Qxg7# 1-0
- (127) 1. Qh6 {threat Qg7#} 1... Nh5 {guarding g7} 2. Qg7+ {anyway!} 2... Nxg7 {self-blocking} 3. Nh6# {black's knight blocked his own king's escape square on g7} 1-0
- (128) 1. Qh6 {threat Qg7#} 1... Bxh6 2. Ne7# {the black bishop was diverted to h6, opening the white bishop's diagonal and taking away the escape square on h8} 1-0
- (129) 1. Qh6 {threat Qg7#} 1... gxf5 2. Qg5# 1-0
- (130) 1. Qh6 1... Qxe5+ {delaying the mate one move} 2. Bxe5 {pawn to f6 next is impossible, because the f-pawn is pinned by Bd5} 2... cxd5 3. Qg7# 1-0
- (131) 1. Qf6 1... Qxe5 {typical useless delaying move} 2. Rxe5 d3 3. Qg7# 1-0
- (132) 1. Qf6 {threat Qg7#} 1... Qxd4 2. Qxg6+ Kh8 3. Qh7# {or Rh7#} 1-0
- (133) 1. Qg6 1... Qe5 {typical useless delaying move} 2. fxe5 Nf8 3. Qxg7# 1-0
- (134) 1. Qg5 {threat Qg7#} 1... Rg8 2. Qxh6+ {a line-opening sacrifice} 2... gxh6 3. Rxg8# 1-0
- (135) 1. Qd7 {threat Qb7#} 1... Rb8 2. Qxc6+ Rb7 3. Qxb7# 1-0
- (136) 1. Qd7 {or Qc7} 1... Rf8 2. Qg7# 1-0
- (137) 1. Qc7 {avoiding the stalemate Qf5?!, guarding c5 from checks, and threatening Qg7#} 1... Qg6 {guarding g7} 2. Qg7+ {Anyway!} 2... Qxg7+ 3. hxg7# {mate with the pawn} 1-0
- (138) 1. Qc4 {threat Qg8#} 1... Rxc4 2. Rxf8# {the black rook was diverted from guarding f8} 1-0
- (139) 1. Qh5 {threat Qh7#} 1... Rd8 2. Qh7+ Kf8 3. Qh8# {the black rook blocks the escape square on e7} 1-0
- (140) 1. Qh5 {threat Qh7# (guarded by both bishop and knight)} 1... Re8 2. Bh7+ Kf8 3. Qxf7# {the knight supports the queen} 1-0
- (141) 1. Qh4 {threat Qh7#} 1... Re8 2. Qh7+ Kf8 3. Qh8# {the knight on d5 covers the escape square on e7} 1-0
- (142) 1. Qg6 {threat Qh7#} 1... Qg8 2. Qh7+ {or Nf7+} 2... Qxh7 3. Nf7# 1-0
- (143) 1. Qh6 {or Rgh3} 1... Bh7 2. Qxh7+ Kf8 3. Qh8# 1-0
- (144) 1. Qh5 {or Rh8+. White now threatens Qh8#} 1... f6 2. g6 {cutting off the escape square on f7} 2... Bh2 {blocking support from the rook for Qh8#} 3. Qh7# {but the pawn supports the queen to h7 instead} 1-0
- (145) 1. Qh7 Rd7 2. Qh8+ Ke7 3. Nf5# 1-0
- (146) 1. Qh5 {or Qh4} 1... f6 {creating a flight square on f7} 2. g6 {taking away the escape square on f7 (threat Qh7#)} 2... Rfe8 3. Qh8# {rook supports queen} 1-0
- (147) 1. Qg4 {threat Qg5#} 1... g6 {creating an escape square on g7} 2. Bh6 {encirclement by the bishop (taking away the escape square on g7)} 2... Nd4 3. Qg5# {the bishop also supports the queen to g5} 1-0
- (148) 1. Qg4 {threat Qg5#} 1... g6 2. h6 {taking away the escape square on g7} 2... Nf5 3. Qg5# 1-0
- (149) 1. g6 {threat Rh7# (pawn supports rook)} 1... Bg8 {guarding h7} 2. Rh7+ {anyway!} 2... Bxh7 3. g7# {self-blocking by the bishop on h7!} 1-0
- (150) 1. c6 {the pawn supports the queen} 1... b6 2. Qa6 e2 3. Qb7# 1-0
- (151) 1. c6 {threat Qb7#} 1... Bxc6 2. Nxc6+ {the b-pawn is pinned} 2... Kc8 3. Qd8# {knight supports queen} 1-0
- (152) 1. Ne6 Qxh4 2. Bg7# {the knight supports the bishop} 1-0
- (153) 1. Ng5 {threat Qh7#} 1... Rg7 2. Rd8 {pinning the defender} 2... Qxd8 3. Qxg7# {the black queen was diverted from its job of guarding g7} 1-0
- (154) 1. Ng5 Kg7 2. Qxh7# {the pawn on e5 cuts off the black king's escape via the f6 square} 1-0
- (155) 1. Ng5 Kg8 2. Qxh7# {the knight supports the queen, and cuts off the escape square on f7} 1-0
- (156) 1. Ng5 {or Qh6} 1... h6 {blocking the queen's path to h7} 2. Qxg6# {the queen exploits the pin} 1-0
- (157) 1. Be4 {threat Qh7#} 1... f5 2. Qxf5 Qxe5 3. Qxh7# {the bishop supports the queen} 1-0
- (158) 1. Be4 h6 2. Qxh6+ Kg8 3. Qh7# {the bishop supports the queen} 1-0
- (159) 1. Bg6 {threat Qf7# (the f-pawn is pinned)} 1... Re7 2. Qh8# {the rook blocked the escape square on e7} 1-0
- (160) 1. Rh3 {threat Qh7#} 1... Nxf6 2. gxf6 Rfe8 3. Qg7# 1-0
- (161) 1. Rh3 1... h6 {a delaying move} 2. Qxh6 {threat Qh8#} 2... f5 3. Qh7# {the rook supports the queen} 1-0

- (162) 1. Rg7 {threat Qh7#} 1... Rxc7 2. Qxc7# 1-0
- (163) 1. g6 {encirclement by the pawn: cutting off the escape square on f7 (this idea goes back at least as far as Greco)} 1... Qf6 2. Qh8# {or Qh7#} 1-0
- (164) 1. g6 {taking away the escape square on f7} 1... Rf6 2. Qh8# { the rook supports the queen} 1-0
- (165) 1. Kc7 {leaving check, and controlling b8 (threats Ra7# and Rb8#)} 1... Nc6 { double defense} 2. Ra7+ {anyway!} 2... Nxa7 3. b7# {the white king guards the escape square on b8, and supports the pawn to b7 (with self-blocking on a7 by the black knight)} 1-0
- (166) 1. Bf6 {encirclement by the bishop (cutting off the escape square on e7)} 1... Ne7 2. Qg7# {the bishop supports the queen (Bg7# also works: queen supports bishop in that case)} 1-0
- (167) 1. Qc5 {encirclement by the queen (taking away the escape square on c7)} 1... Nc6 2. Qd6+ {continuing with the encirclement theme} 2... Qc7 3. Ra8# { the knight supports the rook} 1-0
- (168) 1. a8=Q {pinning the rook} 1... Bb8 2. Qxb8 Rxb8 3. g7# { the rook was diverted from guarding g7} 1-0
- (169) 1. Rd8 {pinning the defender} 1... Rxd8 2. Qg7# { the rook was diverted from its task of guarding the focal point on g7} 1-0
- (170) 1. d7 {threat d8=Q#} 1... Qf6 2. Bxe4+ Qc6 3. d8=Q# 1-0
- (171) 1. c4 {clearing the 3rd rank} 1... Nf3+ 2. Kh1 Rab8 3. Ra3# 1-0
- (172) 1. Kc2 {clearing the rank} 1... b4 2. Ra1+ Qa4+ 3. Rxa4# 1-0
- (173) 1. Kf2 {blocking the f-pawn and putting black in zugzwang} 1... h2 2. Kf1 { releasing the f-pawn} 2... f2 3. Nxf2# 1-0
- (174) 1. Ne1 {blocking the e-pawn and putting black in zugzwang} 1... Ka3 2. Bb3 { encirclement by the bishop} 2... a4 3. Nc2# 1-0
- (175) 1. Kf5 {mutual zugzwang (whoever has to move loses!)} 1... g4 2. Kf4 { mutual zugzwang again!} 2... g3 3. hxg3# 1-0
- (176) 1. Qg8 {mutual zugzwang (restricting black queen)} 1... Qc5+ 2. Kd7+ { discovered check} 2... Qc8+ 3. Qxc8# 1-0
- (177) 1. Kf6 {mutual zugzwang} 1... g5 2. Kf5 g4 3. hxg4# 1-0
- (178) 1. h3 g5 2. Kf5 g4 3. hxg4# 1-0
- (179) 1. Kf4 {taking away the g5 square from the black king} 1... g5+ 2. Kf5 g4 3. hxg4# 1-0
- (180) 1. a6 {mutual zugzwang} 1... g4 2. Kf4 g3 3. hxg3# 1-0
- (181) 1. Kf3 {mutual zugzwang (restricting black king)} 1... g4+ 2. Kf4 { maintaining the restriction} 2... g3 3. hxg3# 1-0
- (182) 1. Ka2 {encircling the black king (guarding b3: mutual zugzwang)} 1... Ra5 2. Nc5+ {clearing the square with gain of tempo} 2... bxc5 3. b3# { mate with the pawn} 1-0
- (183) 1. Ne8 {threat Ng7#} 1... Qd4 {guarding g7} 2. Ng7+ {Anyway!} 2... Qxc7 3. Rh6+ {Diversion} 3... Qxh6 4. g4# {exploiting the pin of the h4 pawn (the black queen was diverted from guarding g4 by 2 sacrifices)} 1-0
- (184) 1. Ra6 {the queen is pinned!} 1... Qxd5 2. Rxa7# {a two-move rook manoeuvre} 1-0
- (185) 1. Rh1 Qxf6 2. exf6 Bh3 3. Rxh3 f1=Q 4. Rxh6# 1-0
- (186) 1. Re3 {threat Rh3#} 1... Kh6 2. Rg3 { cutting off the escape square at g5 (threat Qh8#)} 2... Bd7 3. Qxc6# { the rook supports the queen} 1-0
- (187) 1. Rd3 {threat Ra3#} 1... Bc5 2. Ra3+ {Anyway!} 2... Bxa3 {self-blocking on a3} 3. b3# 1-0
- (188) 1. Ra1 g1=Q+ 2. Rxc1 f2 3. Ra1 f1=Q 4. Rxa2# 1-0
- (189) 1. Qh6 {threat Qg7#} 1... gxh6 2. Nxh6# 1-0
- (190) 1. Qh6 Bxf6 2. exf6 {or Nf6+} 2... Qxf6 3. Nxf6+ Kh8 4. Qxh7# {or Qf8#} 1-0
- (191) 1. Qh6 {threat Qg7#} 1... Bf8 2. Rxc6+ fxc6 3. f7# { the white queen also helps encircle the black king} 1-0
- (192) 1. Qc7 Rb8 2. Qxb7+ Rxb7 3. Rf8+ Qd8 4. Rxd8# 1-0
- (193) 1. Qh6 {threat Qg7#} 1... Bxf6 2. Nxf6+ {or exf6} 2... Qxf6 3. exf6 Nd7 4. Qg7# 1-0
- (194) 1. Qg6 {threat Qg7#} 1... fxc6 2. Nxc6+ hxc6 3. Rh3+ Qh4 4. Rxh4# 1-0
- (195) 1. Qg5 g6 2. Qh6 Qxe5+ 3. Bxe5 {the f-pawn is pinned} 3... cxd5 4. Qg7# 1-0
- (196) 1. Qd7 {or Qc7} 1... Rf8 2. Qg7# 1-0
- (197) 1. Qh5 {threat Qh7#} 1... Bxc5 {taking away the knights support for Qh7} 2. Qxh7+ {anyway!}

- (a file-opening sacrifice)} 2... Kxh7 3. hxg5+ {discovered check } 3... Kg8 4. Rh8# 1-0
- (198)** 1. Qh5 {threat Qh7#. Since both bishop and knight cover h7, interfering with either one is futile} 1... Re8 {now the king has an escape square on f8} 2. Bh7+ 2... Kh8 {if Kf8, then Qf7#} 3. Nxf7# { the king meets his doom on h8 instead} 1-0
- (199)** 1. Qh5 {manoeuvring to h7/h8} 1... f5 {creating an escape square on f7} 2. g6 { taking away the escape square on f7 (threat Qh7#)} 2... Rf6 { threatening Rg6 when black would win!} 3. Qh8# { just in time (now Qh7+ loses for white!)} 1-0
- (200)** 1. Qh5 {a Greco idea} 1... f5 2. g6 {threat Qh7#} 2... Re8 3. Qh8# { the rook supports the queen} 1-0
- (201)** 1. Qg5 {threat Qh6#} 1... Qxf6 2. Qh6+ {or exf6} 2... Kg8 3. exf6 3... Rfd8 { no defense exists} 4. Qg7# 1-0
- (202)** 1. Qc3 1... e2 {there is no useful defense} 2. Qxa5# 1-0
- (203)** 1. Ng6 {to support Rh8#} 1... Nxf2+ 2. Nde7+ Qxe7+ 3. Nxe7# 1-0
- (204)** 1. Ng6 1... Rf6 { creating an escape square on f7, and threatening Rxg6, when black would win!} 2. Rh8+ {the knight supports the rook} 2... Kf7 3. Rf8# { again the knight supports the rook, while the other rook supports the knight!} 1-0
- (205)** 1. Nf6 {clearing the diagonal, and supporting both rook and queen to the triply attacked square h7} 1... Be4 { blocking the queen's diagonal, and guarding h7} 2. Rxh7+ {Anyway!} 2... Bxh7 { a telescoping diagonal (when bishop captures rook, the queen's diagonalexpands) } 3. Qxh7# {Knight supports queen} 1-0
- (206)** 1. Ng5 Rxg5 2. Rd8+ Rg8 3. Qg7# 1-0
- (207)** 1. Ne5 Nf6 2. Nxf6+ exf6 3. Qxd7# 1-0
- (208)** 1. Ng5 {to support Qh7#, threaten Nf7#, and block the g-file! (note that Rd1-d8 instead would have allowed Qg2#!)} 1... Rxg5 2. Rd8+ { the black rook has been diverted from the back-rank!} 2... Rg8 3. Qg7# { the black rook is pinned!} 1-0
- (209)** 1. Rh4 hxg5 2. Bg4+ Ke4 3. d3+ Kd5 4. Bf3# 1-0
- (210)** 1. Rh3 Re8 2. Qxh7+ Kf8 3. Qh8+ Bxh8 4. Rxh8# 1-0
- (211)** 1. Qd8 {maintaining encirclement (threat Ra8#)} 1... b6 2. Qc7# 1-0
- (212)** 1. f4 Bb7 2. Rxb7 Bc7 3. Rxc7 h1=Q 4. Nfxd4# 1-0
- (213)** 1. Rd4 {cutting off the escape square on c4} 1... a5 2. Rad1 { supporting the rook once more (freeing the c3-pawn)} 2... b5 3. b4+ axb4 4. cxb4# {the earliest recorded game in chess history with a quiet move forcing mate (sometime during the 1500s!)} 1-0
- (214)** 1. c8=Q {threat Kf7#} 1... Qf5 2. Qc7 Qg6 3. Qg7+ Qxg7+ 4. hxg7# 1-0
- (215)** 1. e5 h6 2. Rxh6+ Kg8 3. Rh8+ Bxh8 4. Qh7# 1-0
- (216)** 1. e5 h6 2. Qxh6+ Kg8 3. Qh7# 1-0
- (217)** 1. d5 {clearing the diagonal} 1... h5 2. Bxf6+ Kh7 3. Qg7# 1-0
- (218)** 1. e5 {clearing the diagonal} 1... Rfc8 2. Qxh7+ Kf8 3. Qh8# 1-0
- (219)** 1. Nf8 Rxh8 2. Rg8+ Rxg8 3. Qxf6+ Rg7 4. Qxg7# 1-0
- (220)** 1. Qh8 {zugzwang} 1... Qe7 2. Qg8 {mutual zugzwang!} 2... Qc5+ 3. Kd7+ Qc8+ 4. Qxc8# 1-0
- (221)** 1. Kf1 {clearing the square and exhausting black's moves (zugzwang)} 1... f3 2. Kf2 h2 3. Kf1 f2 4. Nxf2# 1-0
- (222)** 1. g6 {mutual zugzwang} 1... fxg6+ 2. Kxf6 g5 3. Kf5 g4 4. hxg4# 1-0
- (223)** 1. h3 {mutual zugzwang} 1... gxh4+ 2. Kf4 g5+ 3. Kf5 g4 4. hxg4# 1-0
- (224)** 1. Kf4 {mutual zugzwang} 1... g5+ 2. Kxf5 g4 3. Kf4 g3 4. hxg3# 1-0
- (225)** 1. Kf4 {mutual zugzwang} 1... hxg5+ 2. Kf5 {or Kf3} 2... g4 3. Kf4 g3 4. hxg3# 1-0
- (226)** 1. Kf4 {mutual zugzwang} 1... g5+ 2. Kf5 g4 3. Kf4 g3 4. hxg3# 1-0
- (227)** 1. Kf4 {encircling the black king (mutual zugzwang)} 1... g5+ 2. Kf5 { maintaining encirclement (mutual zugzwang)} 2... g4 3. Kf4 { maintaining encirclement (mutual zugzwang)} 3... g3 4. hxg3# { and the white king supports the pawn} 1-0
- (228)** 1. d4 {threat d5#} 1... exd4 2. f4 Bb7 3. Rxb7 Bc7 4. Rxc7 g2 5. Nbx4# 1-0
- (229)** 1. Rg1 {threat Ra1#} 1... Bd4 2. Rg5 {threat Ra5#} 2... Bb6 3. Ra5+ Bxa5 4. b5# 1-0
- (230)** 1. Qh6 {threat Qg7#} 1... Qxb1+ 2. Kh2 Rg8 3. Qxh7+ Kxh7 4. Rh4# 1-0
- (231)** 1. Qh6 Qf8 2. Qxh7+ Kxh7 3. Rh1+ Qh6 4. Rxh6+ Kxh6 5. Rh1# 1-0

- (232) 1. Qh6 b1=Q 2. Qg7# 1-0
- (233) 1. Qg2 {threat Qg7#} 1... Qd7 2. Qg7+ {anyway!} 2... Qxg7+ 3. fxg7# 1-0
- (234) 1. Qa5 {threat Qa7#} 1... Qxd4 2. Qc7 Rb8 3. Qxb7+ Rxb7 4. Rf8+ Qd8 5. Rxd8# 1-0
- (235) 1. Qh4 h5 2. Qg5 Qxf6 3. Qh6+ Kg8 4. exf6 a5 5. Qg7# 1-0
- (236) 1. Qe3 Bxf6 2. Qh6+ Kg8 3. Rxf6 Qxf6 4. Nxf6# 1-0
- (237) 1. Qh4 Nc6 2. Nc7+ Kf8 3. Bh6+ Kg8 4. Qg5# 1-0
- (238) 1. Ng5 Bf5 2. Rxf5 Rh8 3. Ne6+ fxe6 4. Qg4+ Kh6 5. Rh5# 1-0
- (239) 1. Bh6 g6 2. Qxe5 d3+ 3. Kh1 Qxb2 4. Qxb2 Bxd5 5. Qg7# 1-0
- (240) 1. Rdh1 Qxb2+ 2. Kxb2 a3+ 3. Nxa3 Rxa3 4. Rh8# 1-0
- (241) 1. Rh4 Kg7 2. Qh6+ Kg8 3. Qxh7# 1-0
- (242) 1. Kd2 Rxg4 2. Rxg4 h1=Q 3. Rc4 Qh5 4. Rc1+ Qd1+ 5. Rxd1# 1-0
- (243) 1. Be8 {blocking} 1... h6 2. Qxf8+ Kh7 3. Bg6+ {attraction} 3... Kxg6 4. Qf5# 1-0
- (244) 1. Kf5 {restricting the black queen (guarding the g4 escape square)} 1... h6 {zugzwang} 2. Kf4 {mutual zugzwang} 2... hxg5+ 3. Kf5 g4 4. Kf4 g3 5. hxg3# 1-0
- (245) 1. a4 {mutual zugzwang} 1... h5 2. g5 fxg5 3. a5 g4 4. Kf4 g3 5. hxg3# 1-0
- (246) 1. Ka1 {threat Nc6# (avoiding 1.Ka2?,Nb3! 2.Kb3 stalemate)} 1... Nxb3+ 2. Nxb3+ Ka4 3. Ka2 {mutual zugzwang! This was the position white had to approach with perfect timing.} 3... Ra5 4. Nc5+ bxc5 5. b3# 1-0
- (247) 1. Nd4 {threat Nc6#} 1... Nd2+ 2. Ka1 {carefully approaching a mutual zugzwang position} 2... Nxb3+ 3. Nxb3+ Ka4 4. Ka2 {mutual zugzwang!} 4... Ra5 5. Nc5+ bxc5 6. b3# 1-0
- (248) 1. Rg2 {threat Ra2#} 1... Nf2 2. Rg1 {threat Ra1#} 2... Bd4 3. Rg5 {threat Ra5#} 3... Bb6 4. Ra5+ Bxa5 5. b5# 1-0
- (249) 1. Qh6 {threat Qg7#} 1... gxf5 2. Rg4+ fxg4 3. Bxh7+ Kh8 4. Bg6+ Kg8 5. Qh7+ Kf8 6. Qxf7# 1-0
- (250) 1. Qf6 {blocking Bg5+ and threatening mate} 1... Bxf6 2. exf6 {guarding g7 (threat Rg7+ and Rh1#)} 2... Rd8 {creating a flight square on f8} 3. Rdh1 Qxb2 4. Rh8# {rook supports rook} 1-0
- (251) 1. Qg6 {threats Qg8# and Qh6#} 1... Bg7 2. Qh5+ Bh6 3. Qxh6# 1-0
- (252) 1. Qa7 Re5 2. Bxe5 Bd6 3. Bxd6 Kd8 4. Qb8+ Bc8 5. Qxb6+ Qc7 6. Qxc7# 1-0
- (253) 1. Qh5 {threat Qh7#} 1... Re8 {creating a flight square on f8} 2. Rf1 {concentrating force on f7} 2... f5 3. gxf6 Re7 4. f7+ Rxf7 5. Qxf7+ Kh8 6. Qxh7# 1-0
- (254) 1. Qh4 {threat Qh7#} 1... h5 2. Qf6 Qxd4 3. Qxg6+ Kh8 4. Qh7# 1-0
- (255) 1. Ng5 Rxg5 2. Rd8+ Rg8 3. Qg7# 1-0
- (256) 1. Nf5 Bf6 2. Rh3 Re8 3. Qxh7+ Kf8 4. Qh8+ Bxh8 5. Rxh8# 1-0
- (257) 1. Bd3 {threat Qh7#} 1... Re8 2. Bxh7+ Kh8 3. Bg6+ Kg8 4. Qh7+ Kf8 5. Qxf7# 1-0
- (258) 1. Ba6 {threat Rg8+} 1... Qf8 2. Rb1+ Ka8 3. Bxc7 Qc8 4. Bxc8 a5 5. Rb6 c2 6. Ra6# 1-0
- (259) 1. a3 {zugzwang} 1... h6 2. a4 {mutual zugzwang} 2... h5 3. g5 fxg5 4. a5 g4 5. Kf4 g3 6. hxg3# 1-0
- (260) 1. Qg5 g6 2. Qh6 gxf5 3. Rg4+ fxg4 4. Bxh7+ Kh8 5. Bg6+ Kg8 6. Qh7+ Kf8 7. Qxf7# 1-0
- (261) 1. Qb7 {threat Qg7#} 1... Bf7 2. Qa8+ Bg8 3. Qg2 {keeping h1 under observation} 3... Qd7 4. Qg7+ Qxg7+ 5. fxg7# 1-0
- (262) 1. Qg6 {threat Qh7#} 1... Qxg6 2. Ne7+ Kh8 3. Nxg6+ Kg8 4. Ne7+ Kh8 5. Rxh7+ Kxh7 6. Rh3+ Rh4 7. Rxh4# 1-0
- (263) 1. d6 Bc6 2. Re7# 1-0
- (264) 1. h6 {pawn supports rook} 1... Be6 2. Rh8+ Bg8 3. Rhxg8# 1-0
- (265) 1. Kf3 {threat Rg3#} 1... g1=Q 2. Rh5# 1-0
- (266) 1. Ba6 {threat Rg8+} 1... Qf8 2. Rb1+ Ka8 3. Qxc7 e1=Q 4. Bb7# 1-0
- (267) 1. Rf8 Rxf8 2. b7# 1-0
- (268) {mutual zugzwang} 1. Kf5 f6 2. a3 h6 3. a4 h5 4. g5 fxg5 5. a5 g4 6. Kf4 g3 7. hxg3# 1-0
- (269) 1. Qh5 {another Greco idea} 1... Bb4+ {creating an escape square on e7} 2. c3 2... Re8 {creating an escape square on f8} 3. Qxf7+ Kh8 4. Qh5+ Kg8 5. Qh7+ Kf8 6. Qh8+ Ke7 7. Qxg7# 1-0
- (270) 1. b4 {encirclement by the pawn: guarding a5 (threat Bc4#; note the c4-pawn is pinned)} 1... d5 {guarding c4} 2. Bxc4+ {Anyways!} 2... dxc4 {the 5th rank is now opened} 3. Rg2 {threat Ra2#} 3... Nf2 {blocking the second rank} 4. Rg1 {threat Ra1#} 4... Bd4 {guarding a1} 5. Rg5 {threat

Ra5#} 5... Bb6 {guarding a5} 6. Ra5+ {Anyway!} 6... Bxa5 {self-blocking on a5} 7. b5# 1-0  
**(271)** 1. Qh6 {threat Qh8#} 1... Rf8 {delaying the mate the longest} 2. Bc4+ {diverting the black queen from e8} 2... Qxc4 3. Qh8+ Kf7 4. Qxf8+ Ke6 5. Qe8+ Be7 6. Nf4+ Ke5 7. Qh5+ Kxf4 8. Qf5# 1-0  
**(272)** 1. Ke7 {or Ke8} 1... a2 2. Kxf7 a1=Q 3. Bg7# {a 2-move king manoeuvre to support the bishop} 1-0  
**(273)** 1. Nc6 h2 2. Na5 {or Nd4} 2... h1=Q 3. Nb3# {a 3-move knight manoeuvre} 1-0  
**(274)** 1. Nc4 Ne4 2. Na3 Nc3 3. Nc2# {a 3-move knight manoeuvre} 1-0  
**(275)** 1. Nd6 Ba6 2. Kb1 {a waiting move (maintaining the guard on b2) putting black in zugzwang} 2... Bb5 3. Nxb5# {a 2-move knight manoeuvre, combined with a waiting move by the white king} 1-0  
**(276)** 1. Bc8 Bh1 2. Bb7+ {annihilation} 2... Bxb7 3. axb7# 1-0  
**(277)** 1. Bc8 e2 2. Ba6 e1=Q 3. Bb5# {a 3-move manoeuvre by the bishop} 1-0  
**(278)** 1. Ba6 {crossing the cut-point c4} 1... e2 2. Kc4 {leaving the exposed square c3} 2... e1=Q 3. Bb5# {the king supports the bishop} 1-0  
**(279)** 1. Rg3 g1=Q 2. Ra3+ {attraction for self-blocking} 2... bxa3 3. b3# {the black pawn on a3 took away the black king's flight square} 1-0  
**(280)** 1. Rf1 g2 2. b4+ axb3 3. Ra1# 1-0  
**(281)** 1. Rf1 g2 2. b4+ axb3 3. Ra1# 1-0  
**(282)** 1. Qc7 Rc8 2. Qb8+ Rxb8 3. Nc7# 1-0  
**(283)** 1. Bc6 {threat Qb5+} 1... Ka7 2. Be3+ Kb8 3. Qb5# 1-0  
**(284)** 1. Kb2 {threat Qb3+,Ka5,Qb5#} 1... Qe8 2. Qa3+ Kxc4 3. Qb3# 1-0  
**(285)** 1. Bc6 {threat Qb5+} 1... Ka7 2. Be3+ Kb8 3. Qb5# 1-0  
**(286)** 1. Rad1 {from the earliest recorded game where a quiet move forced mate (1500s)} 1... b5 2. b4+ axb4 3. cxb4# 1-0  
**(287)** 1. f4 {over-protecting g5 (encirclement by pawns)} 1... Bxf4 {the bishop can only capture one of the pawns} 2. Nf6 Bg5 3. Ng8# 1-0  
**(288)** 1. Kb1 {maintaining the guard on b2} 1... Ba6 2. Nd6 {zugzwang} 2... Bb5 3. Nxb5# 1-0  
**(289)** 1. Kh6 {encirclement and support (threat Qf6+)} 1... Nxd8 2. g7# {the white king supports the pawn} 1-0  
**(290)** 1. Kf6 {encirclement} 1... d1=Q 2. Rh5+ 2... Bxh5 {self-blocking} 3. g5# 1-0  
**(291)** 1. Kf6 {encirclement} 1... b1=Q 2. Rh5+ Bxh5 3. g5# {and the white king supports his pawn} 1-0  
**(292)** 1. Bd2 {threat b5+} 1... b5 2. axb5+ cxb5 3. cxb5# 1-0  
**(293)** 1. Qe6 {guarding the escape square on d7!} 1... Rg8 2. Rd8+ Nxd8 3. Nd6# {the black knight was diverted from guarding d6} 1-0  
**(294)** 1. Ra4 {pin} 1... Nc5 2. b6 {threat Ra7#} 2... Nxa4 3. b7# 1-0  
**(295)** 1. Ra6 Nb4 2. b6 Nxa6 3. b7# 1-0  
**(296)** 1. Qb6 {battery creation} 1... Qf1+ 2. Rc1+ {discovered check and block} 2... Kd7 3. Qc7# 1-0  
**(297)** 1. Rg2 {blocking the diagonal} 1... a2 2. Qxh7+ {line opening sacrifice} 2... Kxh7 3. Rh3# 1-0  
**(298)** 1. Ne3 {avoiding stalemate} 1... g4 2. Nf5 {or Nf1} 2... g3+ 3. Nxc3# 1-0  
**(299)** 1. Nac6 {releasing the a-pawn and encircling the black king} 1... a5 2. Nc8 {or Nd5} 2... a4 3. Nb6# 1-0  
**(300)** 1. b5 Be8 2. b6 {threat Ra7#} 2... Bxa4 3. b7# {a successful 3-move pawn manoeuvre to b7} 1-0  
**(301)** 1. Ne4 {threat Nd6} 1... Bxg3 2. f4 {encirclement (guarding g5 yet again!) along with 2 threats (black can only stop one or the other)} 2... Bxf4 {or Bh4 3.Nd6} 3. Nf6 Bc7 4. Ng8# 1-0  
**(302)** 1. Rg1 h2 2. Rga1 h1=Q 3. Ra8# {rook supports rook} 1-0  
**(303)** 1. Rf3 g2 2. Ra3 f1=Q 3. b4# {exploiting the pin} 1-0  
**(304)** 1. Qc6 Qe5 2. Qa8+ Kxa8 3. Nxc7+ Kb8 4. Na6# 1-0  
**(305)** 1. Bf7 Qxh4 2. Rg8+ Rxg8 3. Rxg8# 1-0  
**(306)** 1. Rh3 {to support Qh6+} 1... h5 {a delaying move} 2. Rxh5+ Kg8 3. Qh6 {threat Qh7#} 3... Rfd8 4. Qh8# {the rook supports the queen} 1-0  
**(307)** 1. Qh4 {or Qh3} 1... e3 2. Rh8+ Kg7 3. Qh7# {or Qh6#} 1-0

- (308) 1. d8=Q {threat Qf6#} 1... Ne6+ 2. Kh6 Nxd8 3. g7# 1-0
- (309) 1. Bg6 {clearing the file} 1... Kg8 2. Qh4 Re8 3. Qh7+ Kf8 4. Qh8# 1-0
- (310) 1. Qh5 {leaving the attacked h4 square} 1... Rxf1 2. Bg6+ Kg8 3. Qh7+ Kf8 4. Qh8# 1-0
- (311) 1. c7 f1=Q 2. c8=Q {creating a battery (threat Kf7 discovered mate)} 2... Qf5 3. Qc7 Qg6 4. Qg7+ Qxg7+ 5. hxg7# 1-0
- (312) 1. Re4 Nb6 2. Bxb6 cxb6 3. Ra4# 1-0
- (313) 1. Rd6 h1=Q 2. Rd3 Bc5 3. Ra3+ {a 3-move rook manoeuvre to a3} 3... Bxa3 4. b3# 1-0
- (314) 1. Ne6 Bxe6 2. Qxg6+ Rg7 3. Qe8# 1-0
- (315) 1. f6 {threat Rg7+ and Rh1#} 1... Rd8 2. Rdh1 Qxb2 3. Rh8# {rook supports rook} 1-0
- (316) 1. f6 {threat Qg5+} 1... Bxf6 2. Bxf6 Qc5 3. Qh6 {threat Qg7#} 3... Qg5 4. Bxh7# 1-0
- (317) 1. Bc7 Ba6 2. Rxa6+ Kxa6 3. Ra1# 1-0
- (318) 1. Rf1 {threat Qf7+} 1... f5 2. gxf6 Re7 3. f7+ Rxf7 4. Qxf7+ Kh8 5. Rxh7# 1-0
- (319) 1. Rf1 {threats Qf7+,Qh7+} 1... f5 2. gxf6 Re7 3. f7+ Rxf7 4. Qxf7+ Kh8 5. Qxh7# 1-0
- (320) 1. Rc4 {diversion} 1... Qxc4 2. Qg7# 1-0
- (321) 1. g6 Bxh7 2. g7# 1-0
- (322) 1. Nd5 Qxc6 2. Nxf6 {annihilation of the defense} 2... Qxc4 3. Qxh7# 1-0
- (323) 1. Rd3 Nxc4 2. Rh3 h6 3. Qxh6 d5 4. Qh8# 1-0
- (324) 1. Qh5 {another Greco idea} 1... f5 2. Bg6+ Kg8 3. Qh8# 1-0
- (325) 1. Qg5 {threat Qh6+} 1... Kh8 2. Qh4 {threatening Qh7# while maintaining watch on f6} 2... h5 3. Qg5 Qxf6 4. Qh6+ Kg8 5. exf6 Rfd8 6. Qg7# 1-0
- (326) 1. Ng5 Nxd3 2. Rxf6 {annihilation of defense (threat Qh7#)} 2... Nf2+ {typical annoying checks} 3. Kg1 Nh3+ 4. gxh3 Re8 5. Qh7+ Kf8 6. Qh8# 1-0
- (327) 1. Qh5 {threat Bg6+ & Qh7#} 1... Rd8 2. Bg6+ Kg8 3. Qh7+ Kf8 4. Qh8# 1-0
- (328) 1. Kh6 Rxe7 2. g7+ {(note 2.fxe7?!, Bf7!! is a draw)} 2... Rxc7 3. fxc7# {king supports pawn} 1-0
- (329) 1. Kf5 {encirclement (threat Ba4 and Bd1#)} 1... Qf8 2. Ng7+ Qxg7 3. Be8+ Qg6+ 4. Bxg6+ hxg6+ 5. Kxf6 {mutual zugzwang} 5... g5 6. Kf5 g4 7. hxg4# 1-0
- (330) 1. Bh3 e3 2. Bc8 e2 3. Ba6 e1=Q 4. Bb5# 1-0
- (331) 1. Kd7 a3 2. Ke7 a2 3. Kxf7 a1=Q 4. Bg7# 1-0
- (332) 1. g4 {threat Rh5#} 1... Bg6+ 2. Kf6 {encirclement} 2... b1=Q 3. Rh5+ 3... Bxh5 {self-blocking on h5} 4. g5# {king supports pawn} 1-0
- (333) 1. Kc7 Ka8 2. Nac6 a5 3. Nc8 a4 4. Nb6# 1-0
- (334) 1. Kc4 {encirclement and support} 1... h2 2. Rg3 h1=Q 3. Ra3+ bxa3 4. b3# 1-0
- (335) 1. Kc5 {encircling the black king} 1... Ba4 {the threat was e8=Q} 2. b4# 1-0
- (336) 1. Re6 {threat Ra6#} 1... a5 {self-blocking on a5} 2. Rd6 h1=Q 3. Rd3 Bc5 4. Ra3+ Bxa3 5. b3# 1-0
- (337) 1. Nf7 {a long knight manoeuvre} 1... e5 2. Nd6 Ba6 3. Kb1 {a waiting move which puts black in zugzwang} 3... Bb5 4. Nxb5# 1-0
- (338) 1. Rf4 g3 2. Rf3 g2 3. Ra3 f1=Q 4. b4# 1-0
- (339) 1. Ra2 Qe8 2. Rg1 Qxc6 3. dxc6 Re8 4. Rga1 Kc8 5. Ra8# 1-0
- (340) 1. Rd1 {threat b4+} 1... a3 2. b3 {taking away the a4 escape square from the black king} 2... f2 {other black moves are just useless delaying moves} 3. Rd4 {or Ra1} 3... f1=Q 4. Ra4# {the pawn also supports the rook} 1-0
- (341) 1. b3 {encirclement by the pawn (taking away the a4 square)} 1... f2 2. Ra1 {or Rd4} 2... f1=Q 3. Rxa3# 1-0
- (342) 1. Ke5 {an Alekhine idea!} 1... b2 2. Rh7+ Kg8 3. Rcg7+ Kf8 4. Kxf6 {king supports rook} 4... b1=Q 5. Rh8# 1-0
- (343) 1. Rg5 h3 2. Rg4+ b4+ 3. Kc4 h2 4. Rg3 g1=Q 5. Ra3+ bxa3 6. b3# 1-0
- (344) 1. Kg5 {avoiding checks as much as possible} 1... Nd4 {else the d-pawn queens} 2. d8=Q Ne6+ 3. Kh6 {now the black king is encircled again} 3... Nxd8 4. g7# 1-0
- (345) 1. Kh6 {encirclement and support} 1... d1=Q 2. c8=Q+ Bg8 3. Qb7 Bf7 4. Qa8+ Bg8 5. Qg2 Qd7 6. Qg7+ Qxg7+ 7. fxg7# 1-0
- (346) 1. g6 {threat g7#} 1... Nf5+ 2. Kg5 Nd4 3. d8=Q Ne6+ 4. Kh6 Nxd8 5. g7# 1-0
- (347) 1. d7 {threat d8=Q (a mating combination on the pawn promotion theme)} 1... Nd6 2. g6

{guarding f7} 2... Nf5+ 3. Kg5 Nd4 4. d8=Q Ne6+ 5. Kh6 Nxd8 6. g7# { the g-pawn mates in the end!} 1-0

**(348)** 1. Rd4 g2 2. Rd1 a3 3. b3 f2 4. Ra1 f1=Q 5. Rxa3# 1-0

**(349)** 1. Kc5 {encirclement by the white king} 1... f2 2. Rf4 {and a rook manoeuvre} 2... g3 3. Rf3 g2 4. Ra3 f1=Q 5. b4# 1-0