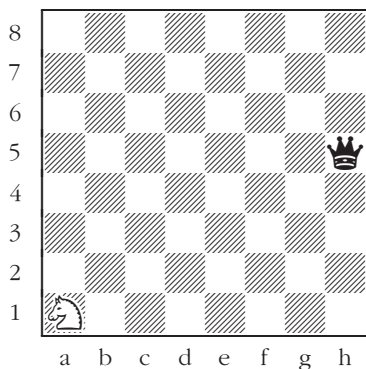


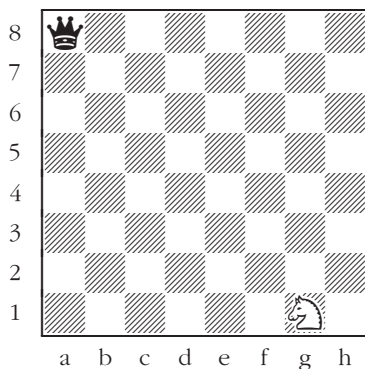
Knights, Queens, Rooks, and Bishops

The queen tames the knight

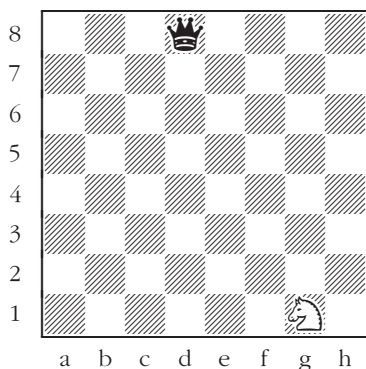
Black to move: Catch the white knight in a trap — in one move, take away all of its retreat squares.



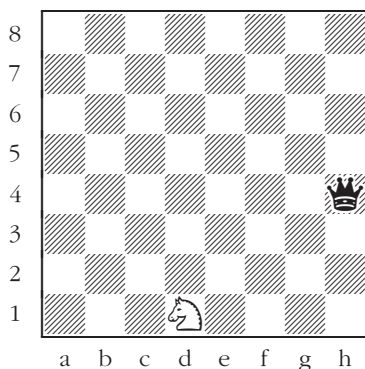
217



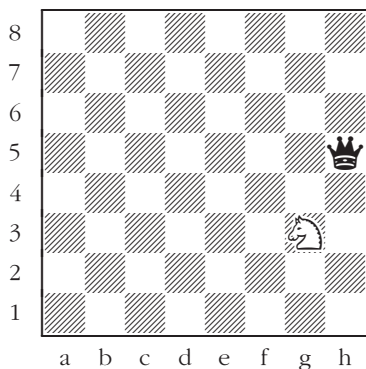
218



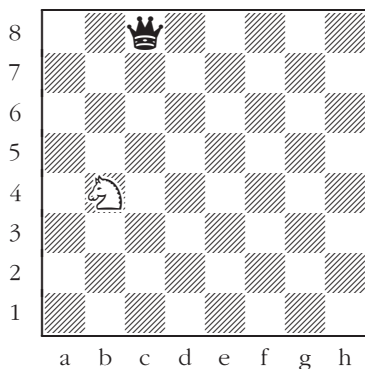
219



220



221

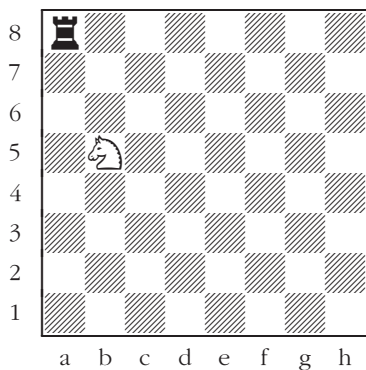


222

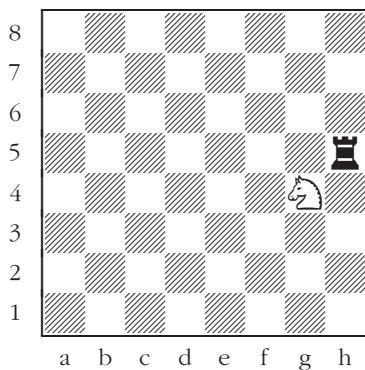
Knights, Queens, Rooks, and Bishops

Attacks by the knight

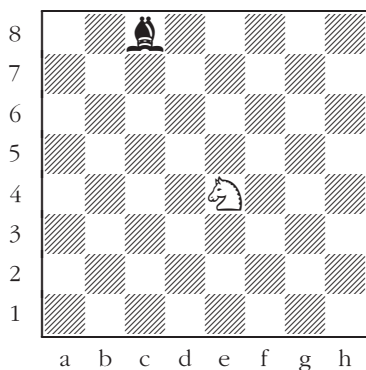
White to move: Attack an enemy piece with the knight.



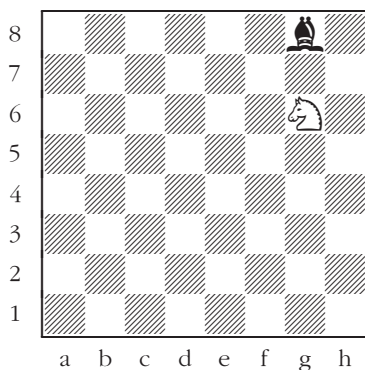
223



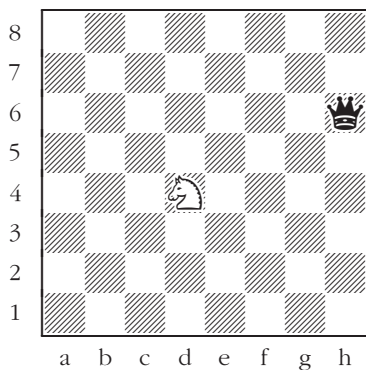
224



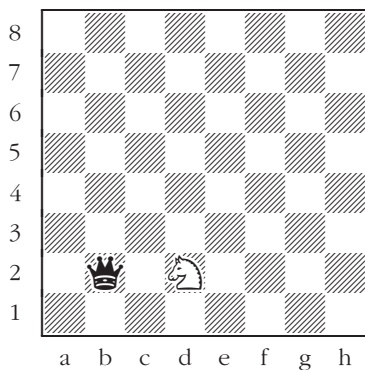
225



226



227



228