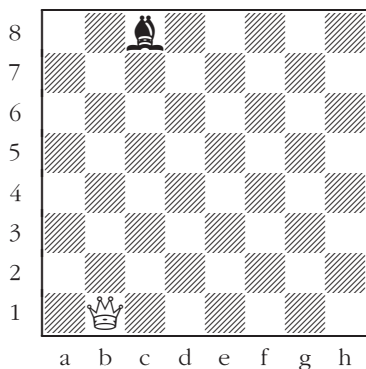


Queens, Rooks, and Bishops

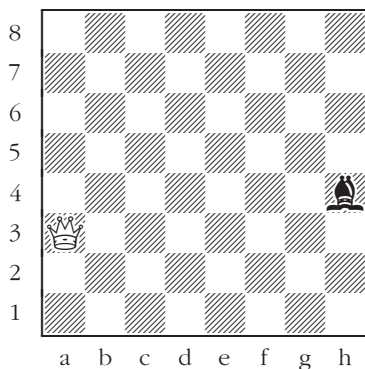
Attack on the bishop

White to move: Attack the bishop with the queen (but don't put the queen under attack).

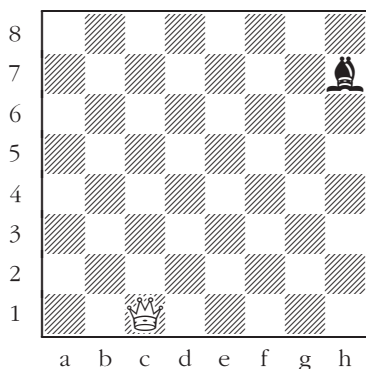
Find three different ways.



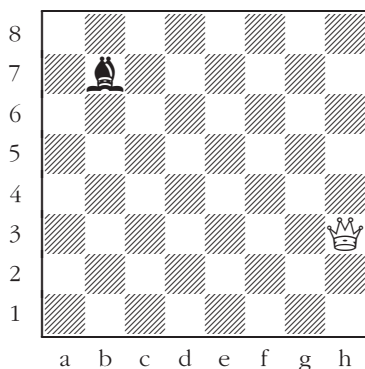
127



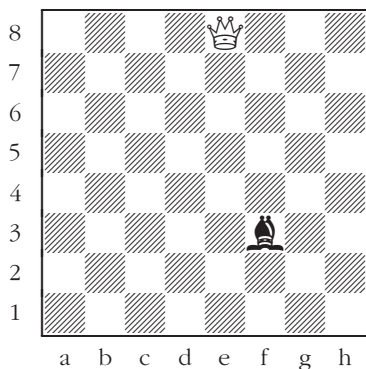
128



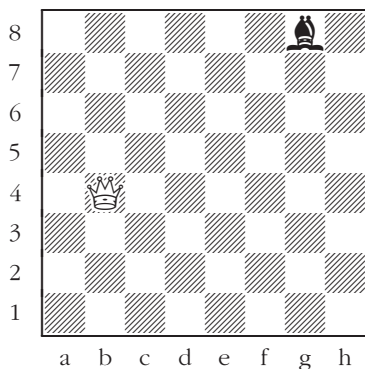
129



130



131

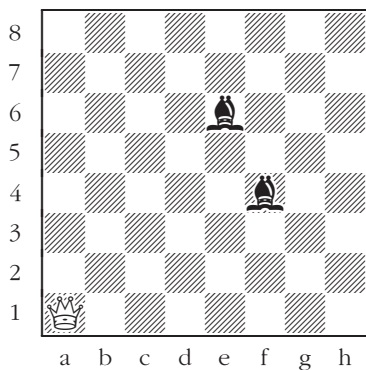


132

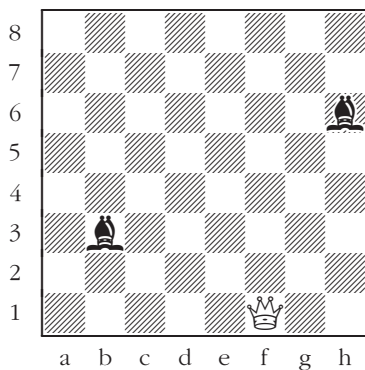
Queens, Rooks, and Bishops

Double attack

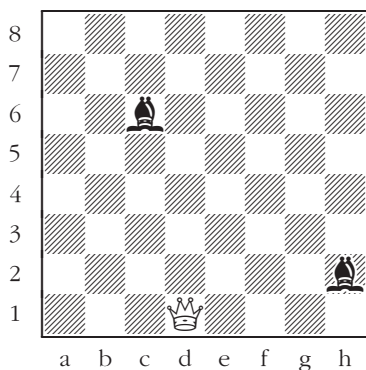
White to move: Attack both bishops with the queen (but don't put the queen under attack).



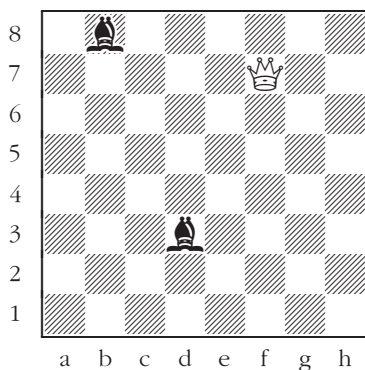
133



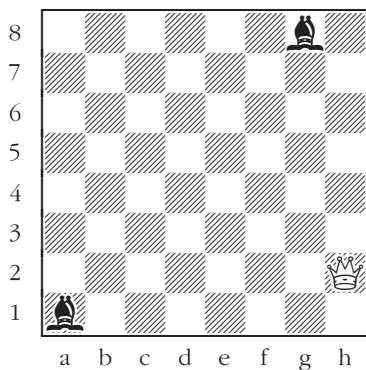
134



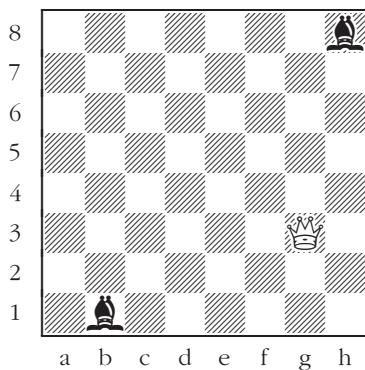
135



136



137



138